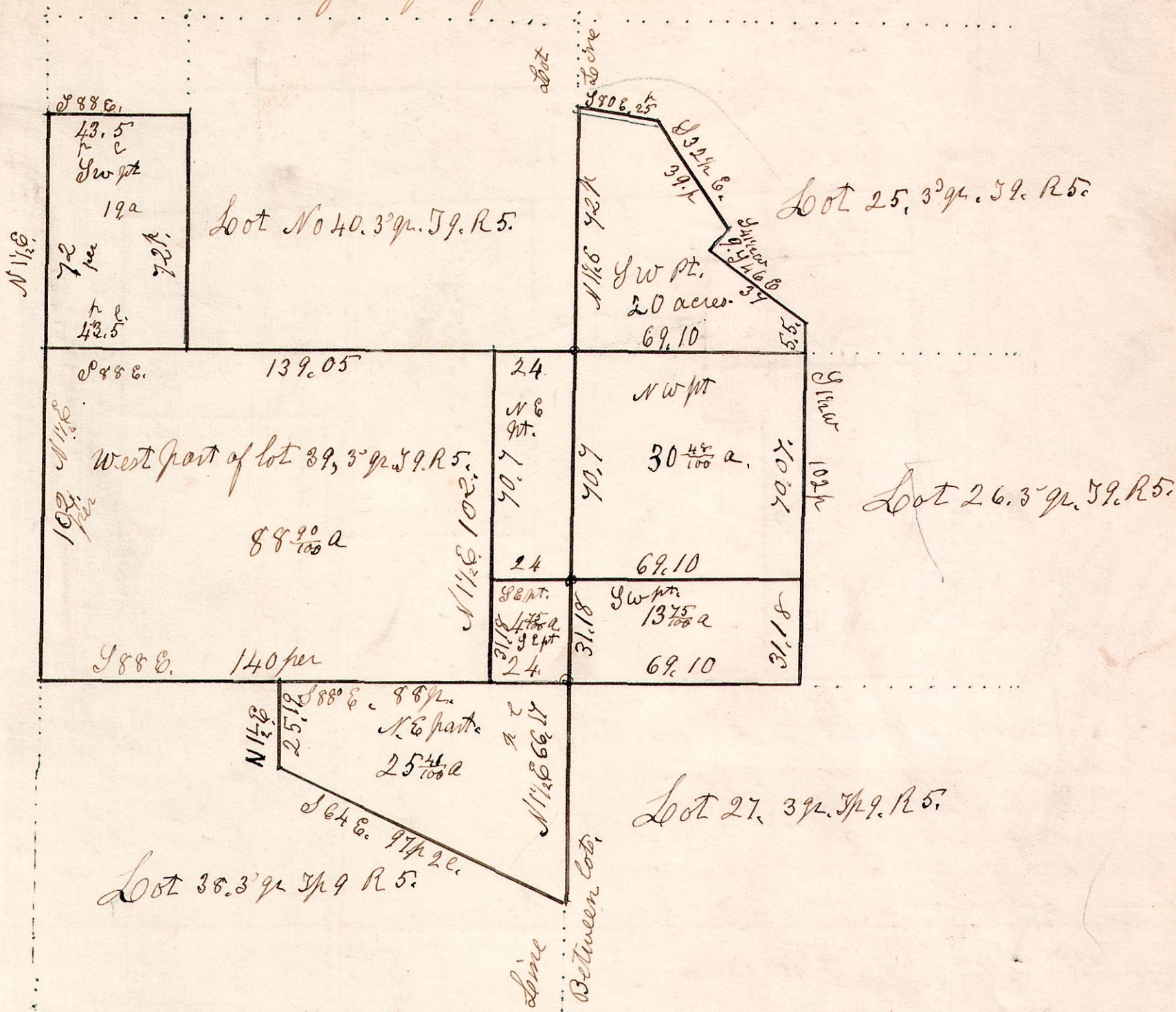


5-9. 25-26. 38-39+40. 3rd q^r

Surveyed for John Sharp.

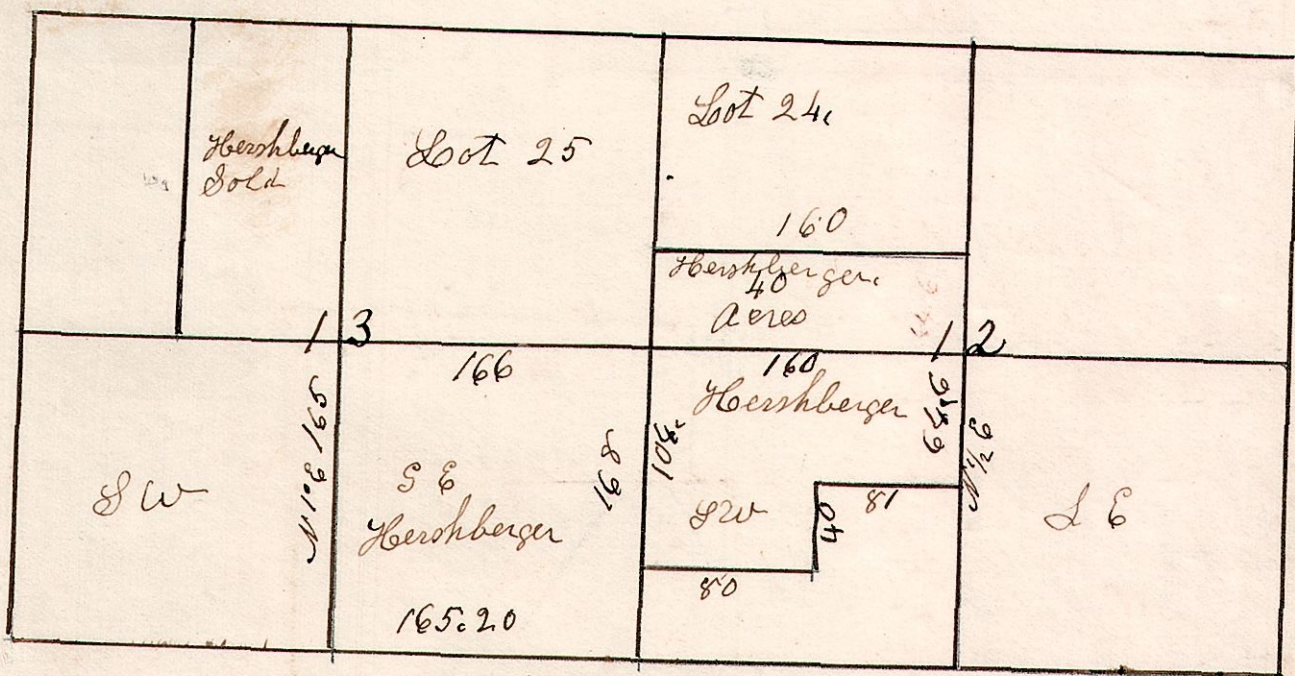


I hereby certify that the above is a correct plat of parts of lots No 25-26-38-39 and 40, March 26th 1869.

Samuel Robinson
Surveyor.

5-9. 24. 25. 1st q^r

59. R 5. C^t W. R. School Land.



40 acres S. part of Lot 24 belongs to Jacob & Miller's farm. The S E & S W corners of said lot is 6 miles W of the Congress.

Dec 13th 1848.