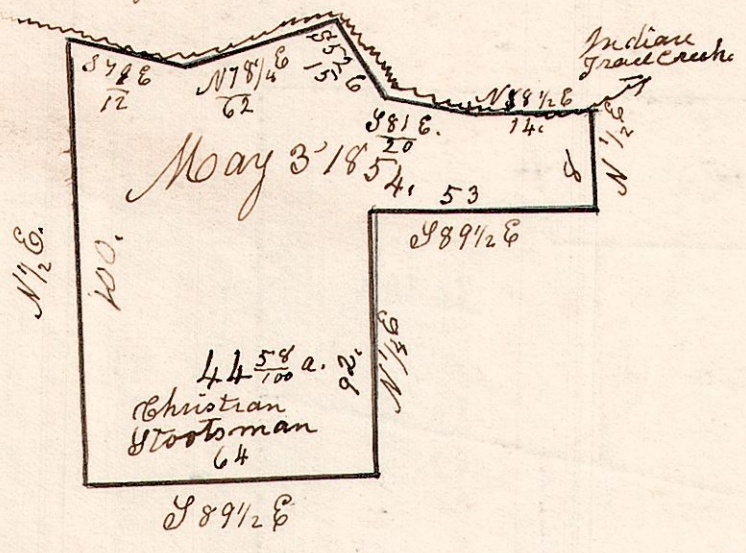


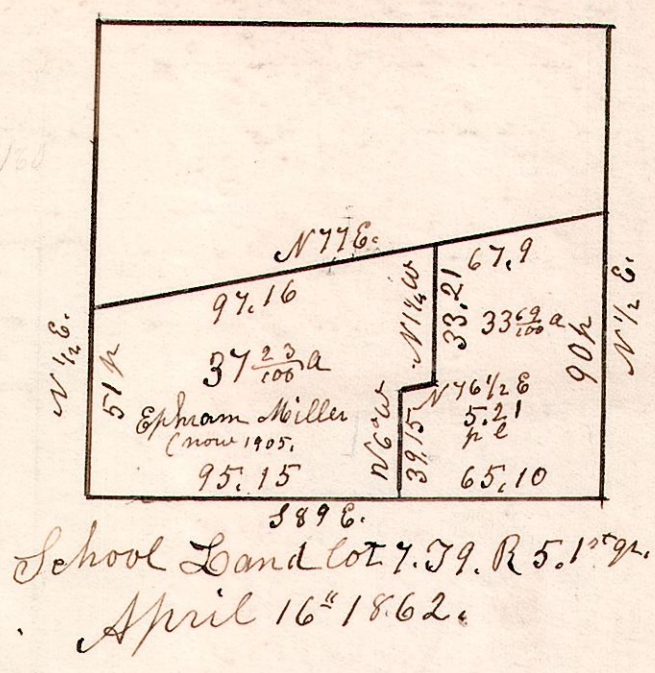
5. 9. 1. 1/2

South west part of lot no. 1.
12th gr. 59. R. 5.
May 3rd 1854

School Land.



5. 9. 7. bpt.

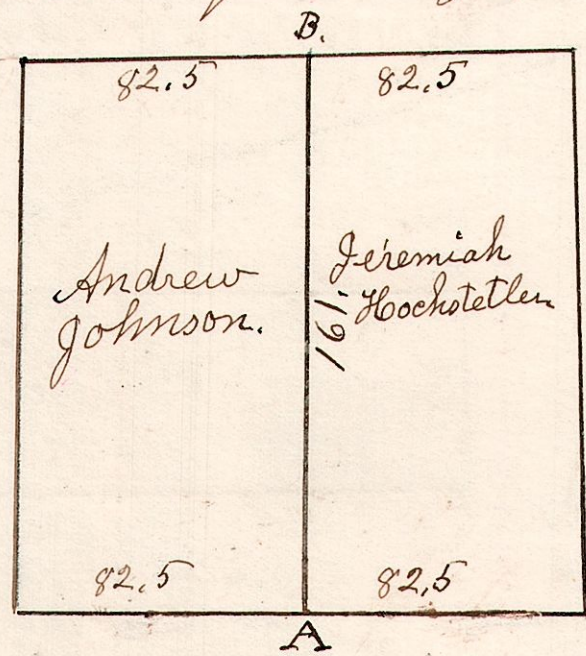


School Land lot 7. T. 9. R. 5. 1st gr.
April 16th 1862.

5. 9. 13. N.W.

January 4th 1833. Surveyed the NW gr of Section
13. in T. 9 of R. 5, in the following manner.

Chestnut 28 S 11 W 41.
B. Oak 30 N 9 W 48.



W. Oak 26 N 44 W 20.
do 16 S 30 W 50.

Cherry 16 S 41 W 14.
Gum 12 N 50 W 38.
sugar

Maple 18 S 46 W 21.
do 12 S 33 E 50.

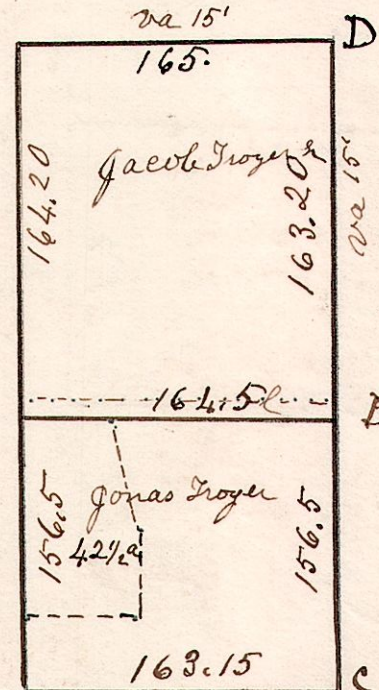
A. W Oak .14 S 40 W 3.
" Ironwood. 8 North 2.

5. 9. 18. E 1/2

Surveyed E 1/2 of Section 18 in T. 9 of R. 5 in the following
manner and for the following persons.
June 9th 1829

W. Oak 24. N 27 E 32.
B. Oak 28. S 36 E 22.

W. Oak 16 N 66 E 29.
do 12 S 23 W 8.



Surveyed 42 1/2 acre piece for
John Clawbaugh, dec. Heirs.
August 16th 1862. Moses D. Miller admr

E. W Oak N 55 E 35.
" Dogwood. 5. S 36 E 15.

E. Stone in field the corner.
The stone 3 perches S of gr sec corner.

B. Hickory 12 S 40 E 38.
B. Oak 26 N 28 E 34.

Hickory 16 N 52 W 16.
do 12 N 81 E 24.