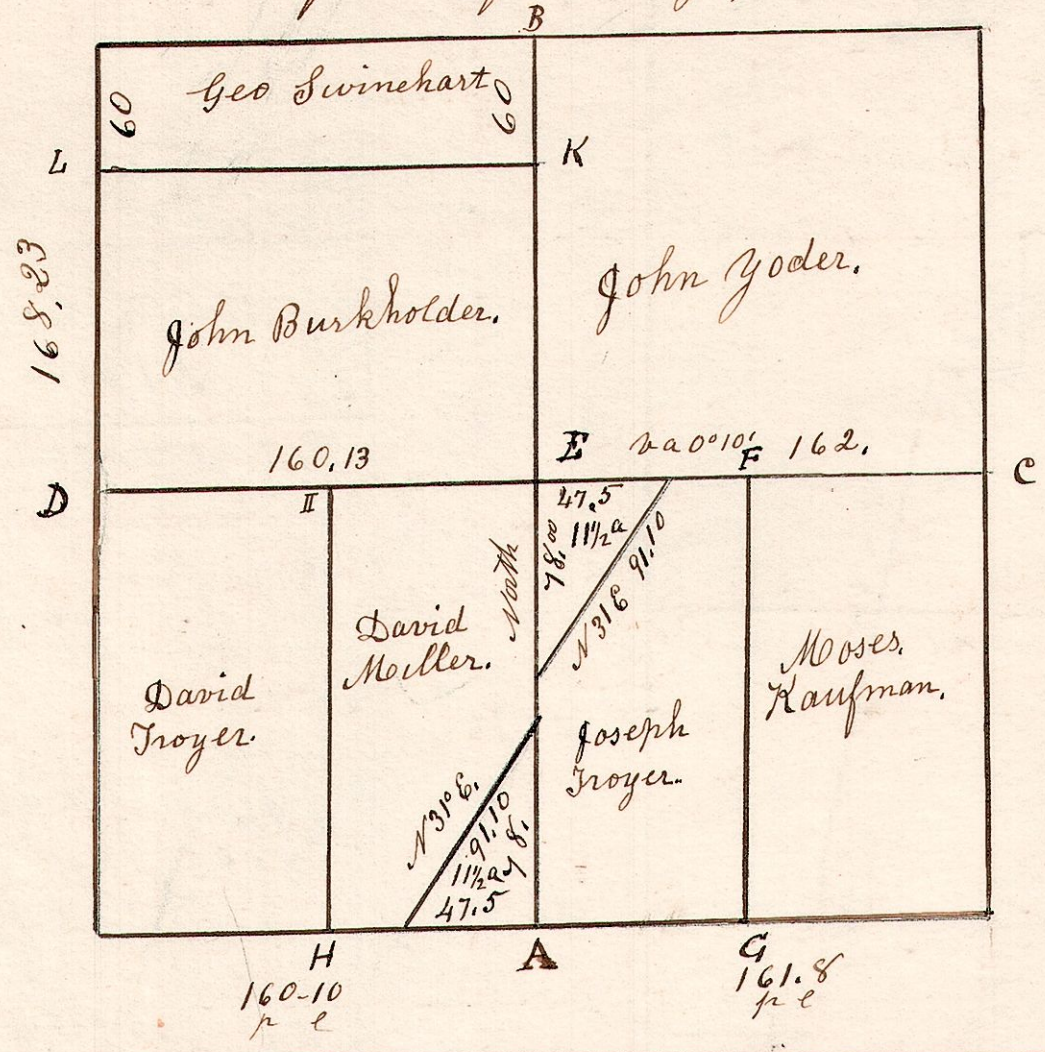


5.9.4.

June 8<sup>th</sup> 1836. Surveyed S.4. in T.9. of R.5 in the following manner, and for the following persons.

No 185

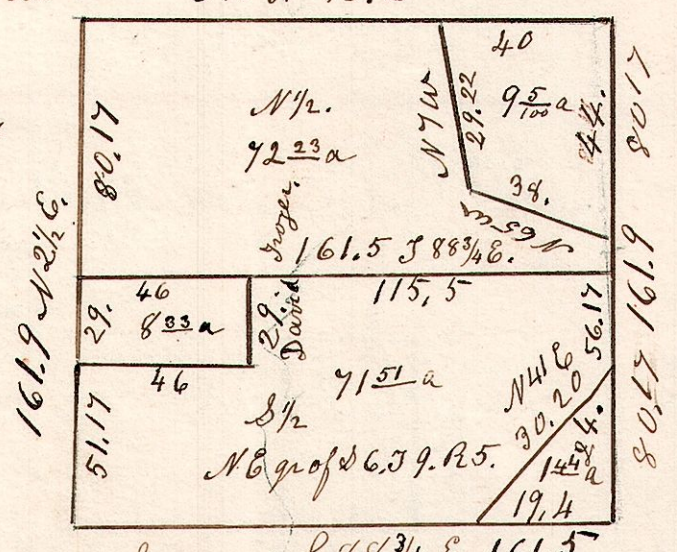


C	W. Oak	22	S 64° W	27.
"	do	14	N 6° W	31.
D	Hickory	15	S 38° W	20.
"	R. Oak	10	N 77° E	31.
E	Maple	9	S 70° E	14.
"	Ash	5	N 17° E	16.

5.9.6.

David Troyer. 3986. 161.5

Whole gr 162.5

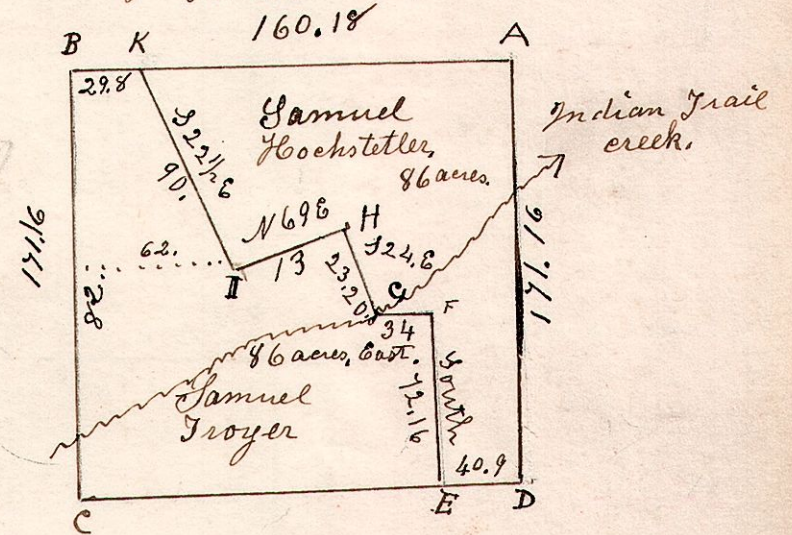


March 22<sup>nd</sup> 1873. 88 3/4 E 161.5

5.9.3. 1<sup>st</sup> gr.

Feb. 27<sup>th</sup> 1835.

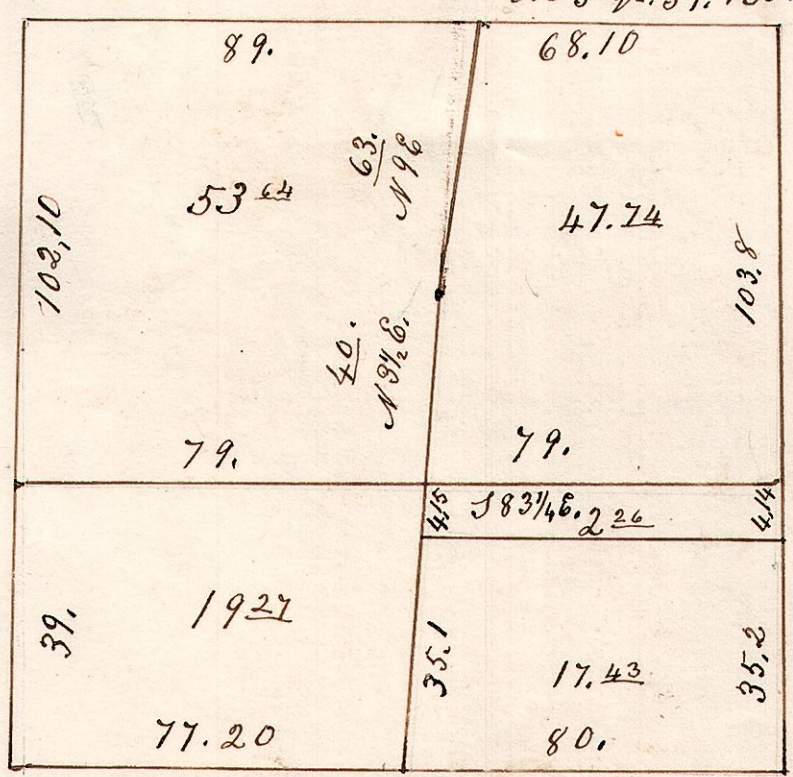
Surveyed Lot 3. 1<sup>st</sup> gr S.9. R.5. School Land, Walnut Creek Township.



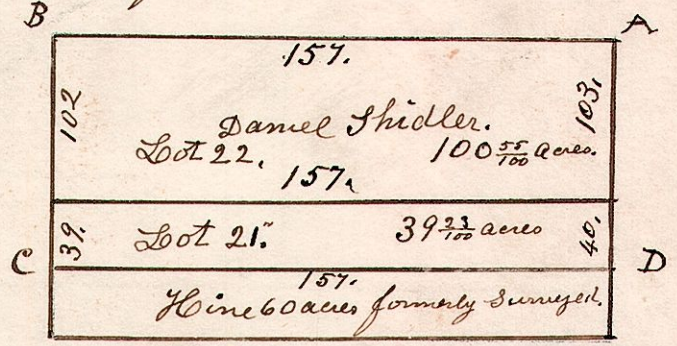
A	W. Oak	25	S 71° W	42
"	do	13	S 50° E	57
B	R. Oak	12	S 34° E	36
"	Ash	12	S 74° W	26
C	Gum	16	N 18° E	82
"	Ironwood	8	S 10° W	39
D	Chestnut	-	S 26° E	9
"	W. Oak	-	N 43° E	38

5.9. 21+22.

March 25<sup>th</sup> 1869. P. Pomarene Survey. N. pt. Lot 21. & Lot 22. in 3<sup>rd</sup> gr. S.9. R.5. 157.20



January 8<sup>th</sup> 1835. Surveyed the north half of Lot 21 and Lot No 22. in the 3<sup>rd</sup> gr. in T.9. of R.5. 5.9. 21-22. 3<sup>rd</sup> gr.



A	W. Oak	20	N 68° W	23
B	W. Oak	18	N 15° W	15
C	W. Oak	18	S 13° W	15
"	Dogwood	4	N 2° W	21
D	Hickory	12	S 44° E	18
"	Dogwood	7	S 44° W	18