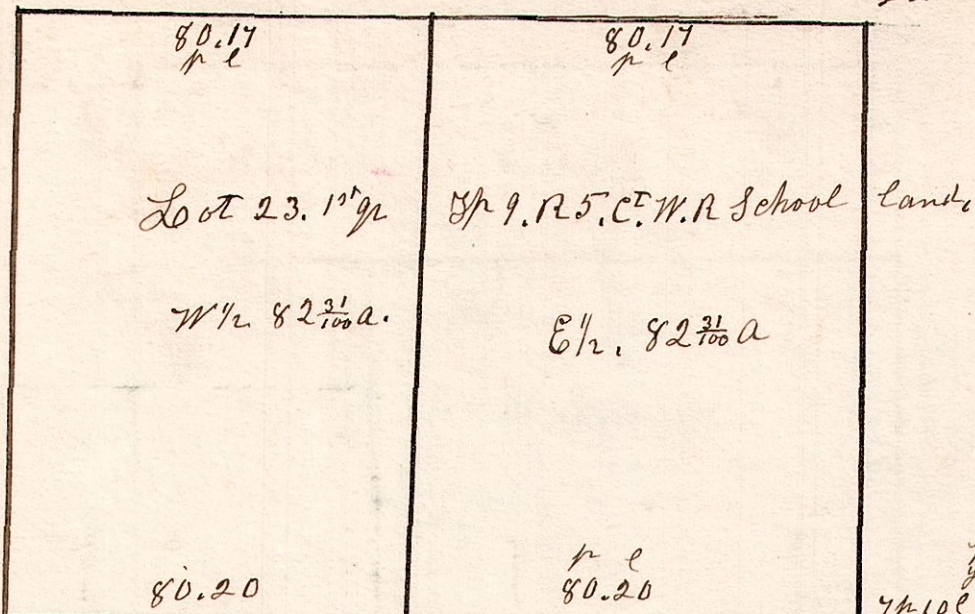


Hickory 23 84 9 6 17.
Chestnut 19 14 8 10 27

Lot 23, 1st qr. S 9, R 5.
888 1/2 E.

Dogwood 23 52 7 1/2 W 9.
Elm 18 27 W 40.

5.9.23, 1st qr.

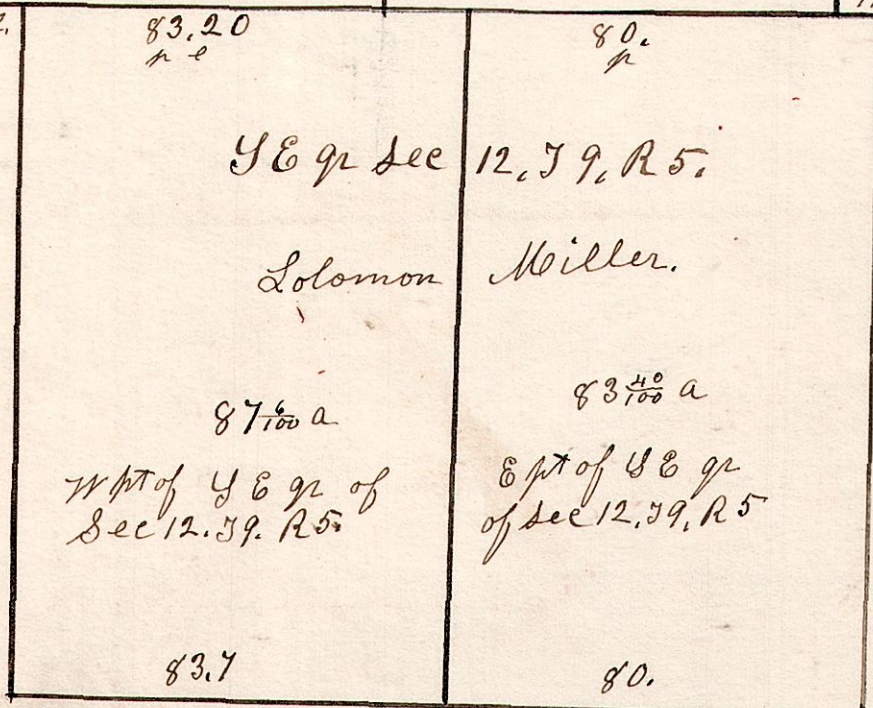


Solomon Miller
Survey March 20th
1873.
Salt creek sp.

W. Oak 23 N 2 1/2 E 42
Ironwood 21 N 42 W 45

W. Oak 9. S 5 W 18.
Elm 12 S 62 1/2 E 55.

5.9.12.



W. Oak 18 N 55 E 15.
do 24 S 52 1/2 E 36.

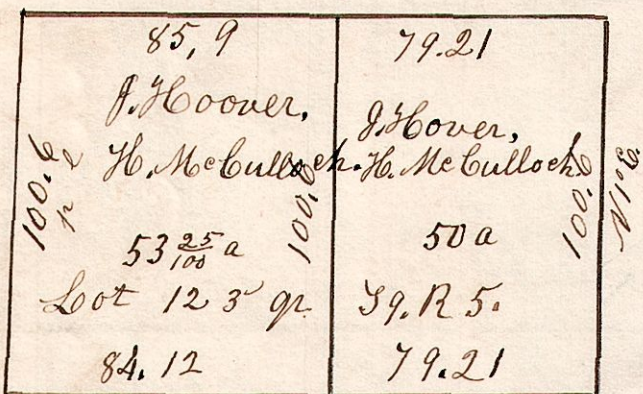
S. E qr Sec 12, T 9, R 5.
March 20th 1873.

W. Oak 23 N 5 1/2 W 21.
Hickory 22 N 35 1/2 E 48.
W. Oak 15 S 12 W 24.
do 20 N 73 1/2 W 34

5.9.12.

April 19th 1866.

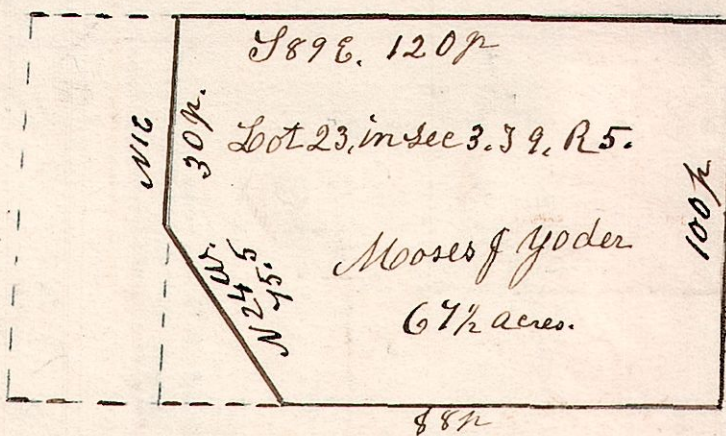
S 89 E. 165.



164.8

5.9.23.

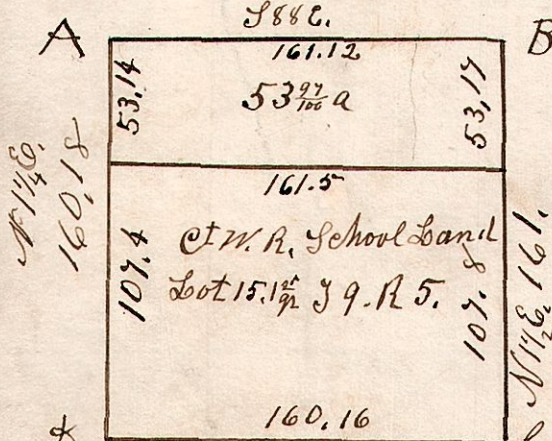
March 15th 1847.
Lot 23, 3rd qr. S 9, R 5.



5.9.15^{1st} qr

Lot 15, 1st qr. S 9, R 5.
School Land.

Note - Stone set at
corner "A" by agreement
by property owners using
measurements from notes
hereon given, Sept. 1926.



A	Chestnut	15	84 1/2	20
"	do	10	N 26 1/4 E	62
B	W. Oak	14	S 42 E	17
"	do	15	S 54 W	32
C	B. Oak	14	N 83 1/2 E	23
"	do	15	N 41 W	39
D	Gum	15	N 68 1/2 E	34
"	Hickory	20	S 30 1/2 E	33

Christian Miller.
June 7th 1872.