

December 31st 1828 Surveyed Section 7, T8, R5
in the following manner and for the following persons.

5.8.7.

Cherry 20 S 21 E 62.
B. Oak 14 S 73 W 49.

W. Oak 12 S 31 E 9.
B. Oak 6 N 59 W 17.

W. Oak 16 S 66 E 75.
Chestnut 16 N 6 E 88.

W. Oak 18 S 25 E 15.
Hickory 12 N 17 E 22.

B. Oak 30 S 27 W 47
W. Oak 18 S 79 E 10



B. Oak 24 S 18 W 54.
do 24 N 29 E 45.

Chestnut 26 N 16 W 40.
B. Oak 18 S 61 E 29.

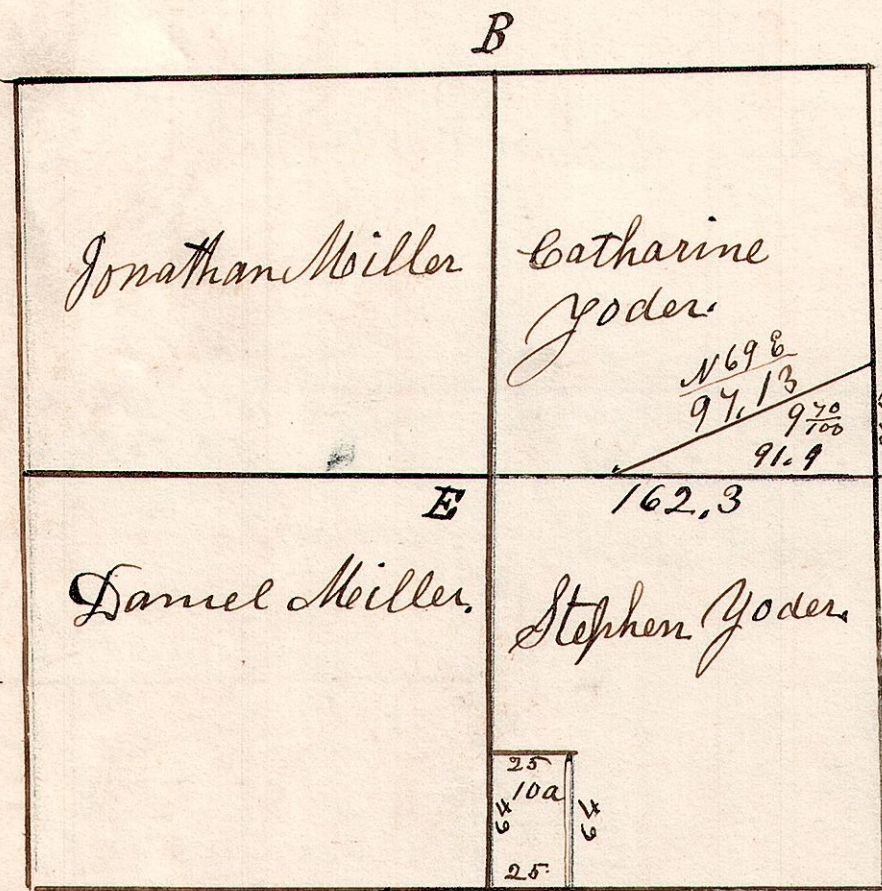
W. Oak 20 S 50 E 4.
do 12 N 80 W 49.

E	W. Oak	30	S 7 W	50
"	do	20	N 55 W	62
F	W. Oak	18	S 39 W	47
"	Hickory	6	N 68 W	56

G	Stone corner			
H	W. Oak	5	N 21 W	65
"	Hickory	4	S 73 W	16

5.8.5.

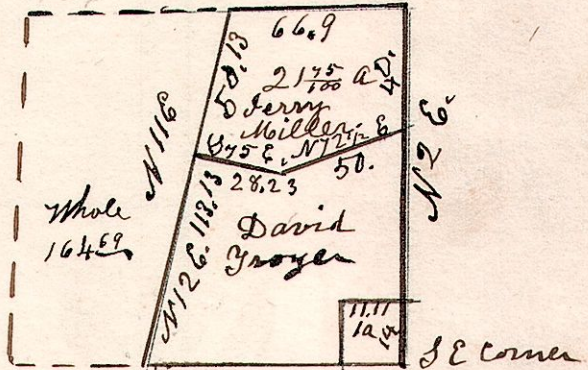
April 31st 1831



E. Stone corner

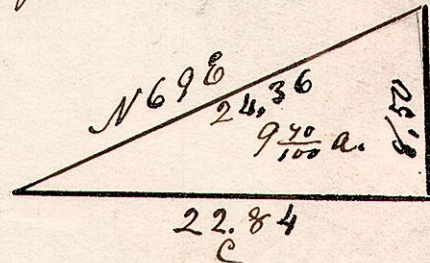
B. Oak 36 N 65 W 22.
Chestnut 28 S 73 E 45.

5.8.7.
Ept of NW q of 97.58 R5.
388 1/2 a.



Aug 18th 1841
Divided the above gr sec for
David Troyer. Surveyed above gr
June 3rd 1873.

10a Survey
June 3rd 1873.



Record SE gr and make plat for the small piece
in the S E corner of the NE gr for Stephen Yoder.