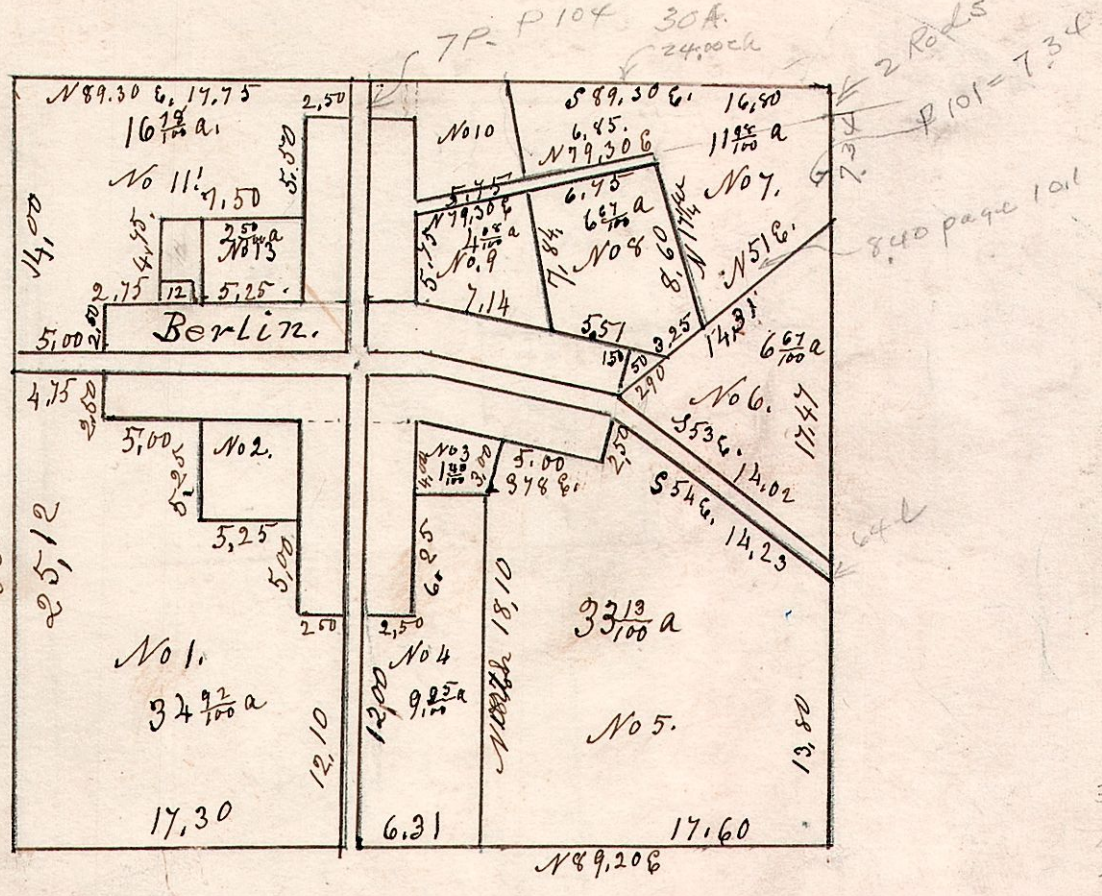


5.9.15 Original and corrected plat of the NW q of S15.39 R5.
January 12th 1829.

No 234



No 12 contains 1/5 of an acre.
20 chains to the inch.
No 12. E & W 1.75 } 20 of an acre.
N & S 1.12 1/2

34.90
6.31
49.21
42.81

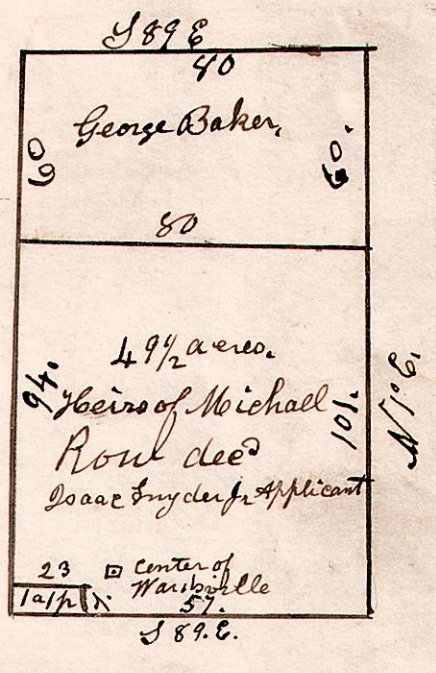
5.8.24.

Surveyed the east 1/2 of the S.E. q of Sec 24. T8. R5.
Aug 11th 1849.

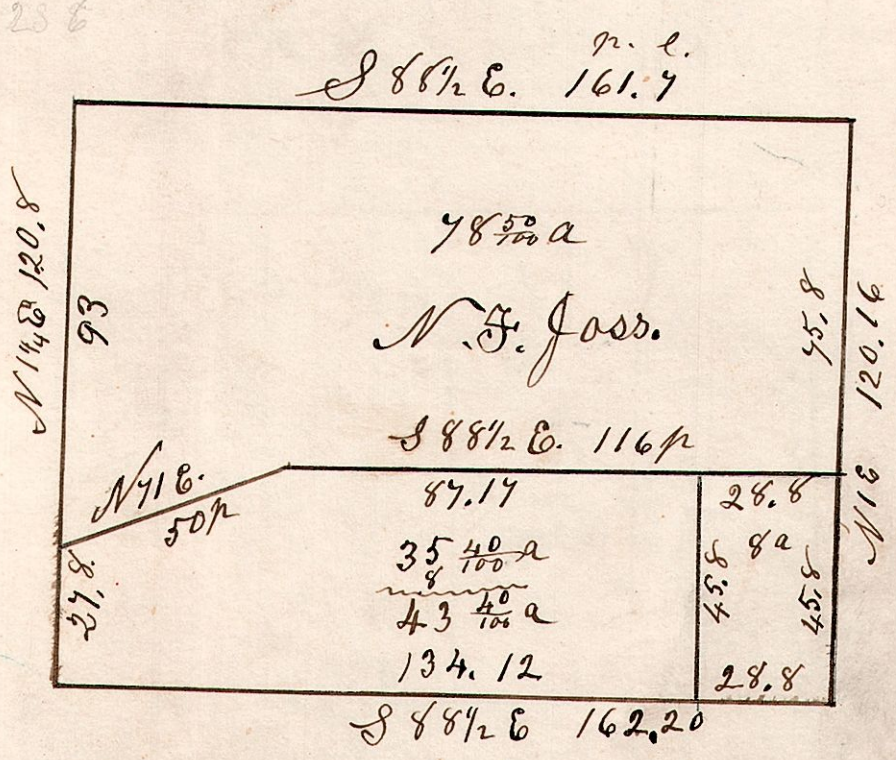
1 acre + 1 perch in SW corner reserved or excepted.
Lots in Wardsville excepted, which was not deeded
by Blikenenderfer to Row. (town) lots No 1. 7. 9. 11. 12
14. 15. 16. 17. 18. 19. 20. 21. 22. 23. 24. 28. 29. 30. 31. 39.
41. 49. 54. 79. 81. & 83.

See Surveys of 1830.

Petition for partition executed March 22nd 1852.
Isaac Snyder Martin Gorter } Common on 4 9/10 acres
Jacob Springer }
George Blouhett }
Saml Robinson }



5.10.6th Lot 6. 4th q. T10. R5.
August 21st 1860.



5.8.4. NW q. & W 1/2 of No q of
Sec 4. T8. R5.



January 7th 1859.
Surveyed for the heirs of Daniel
Slawbaugh.