

5. 8. 25.

Sec 25, T8, R5

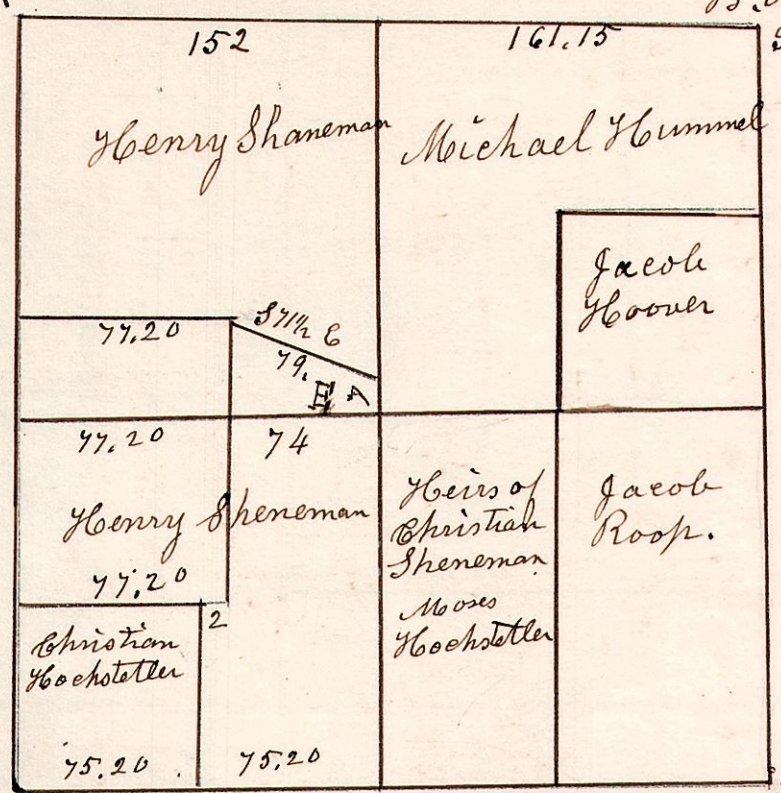
Hickory 14 S 22 1/2 E 24.
W. Oak 18 N 39 E 37.

W Oak 24 N 54 E 18.
do 16 S 72 W 44.

Chestnut 10 S 58 E 12.
B. Oak 20 N 11 W 54.

No 243

Surveyed Dec 13 1837.



Maple 24 S 41 W 16.
W. Oak 30 N 41 W 16.

Grum 12 N 53 E 30, 160.
W. Oak 30 S 23 W 56.

W. Oak 24 S 15 W 36.
do 18 N 9 E 30.

5. 8. 19. October 28 1841. Surveyed Dec 19.
in 58 of Range 5.

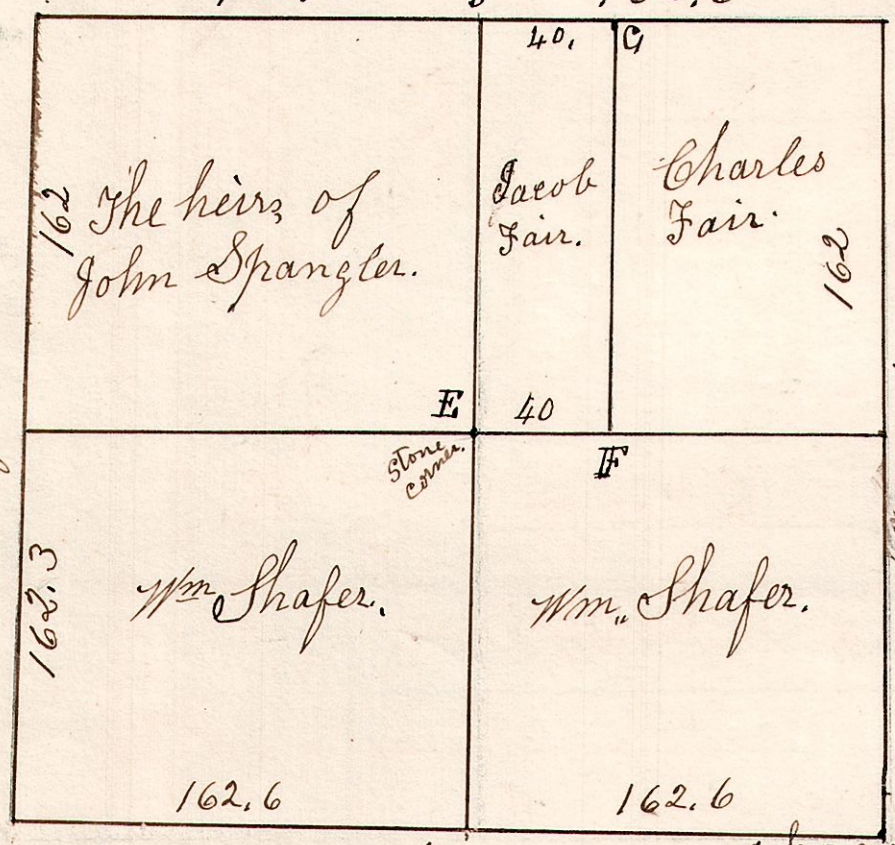
W. Oak 16 N 45 W 41.
do 15 S 47 E 29.

162.6

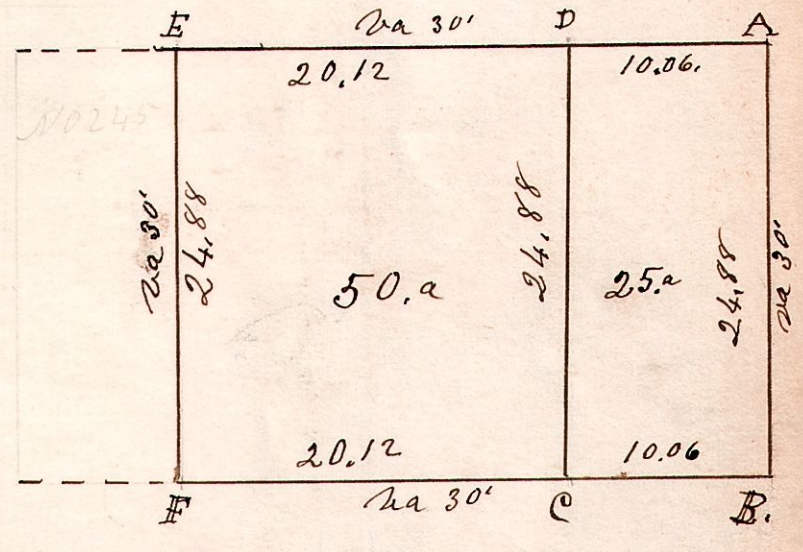
W. Oak 12 S 41 W 9.
B. Oak 24 N 40 E 31.
B. Oak 12 S 47 E 23.
do 12 N 57 W 42.

162.6

B. Oak 14 N 82 W 26.
Cherry 13 N 75 E 47.



5. 9. 40. 3/4 Ept of L 40, T 9, R 5, S 3 Military



Surveyed the above Feb 4 1826.
Being the east part (or part) of lot
40, in Township 9 of Range 5 and
Section 3 (Military) of which
the above is a correct plat
of the same. Samuel Robinson
Co Surveyor.

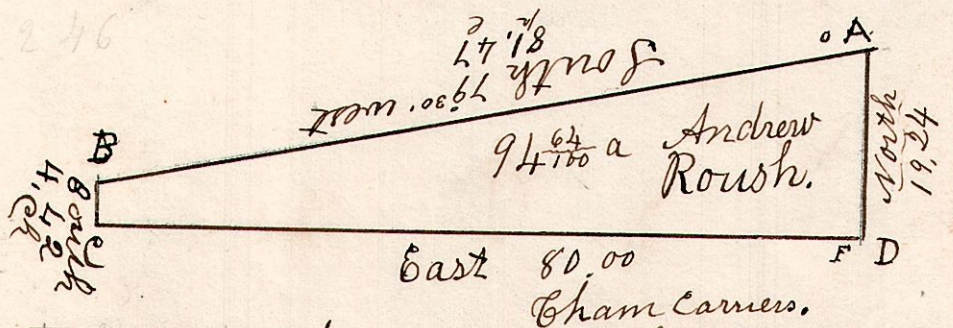
A	Chestnut 7 N 67 W 19.	D	Hickory 8 S 87 W 27.
"	W. Oak 30 S 57 E 18.	"	W. Oak 15 N 17 E 37.
B	W. Oak 12 N 45 W 44.	E	W. Oak 33 N 74 E 5.
"	Hickory 10 N 39 E 16.	"	Hickory 12 S 40 W 22.
C	Chestnut 10 S 89 W 13.	F	W. Oak 10 N 22 E 22.
"	Hickory 8 N 74 E 20.	"	Hickory 5 S 13 W 9.

B. Oak 11 N 4 E 6.
L. Asp 12 S 6 31

Hickory 12 N 71 E 22.
do 10 N 9 1/2 E 22.W. Oak 5 S 77 E 10.do 10 N 9 1/2 E 22.

F & G. Stone corner.
E Stone

5. 10. 23. 4 1/2 gr.



A	W. Oak 16 the corner.
B	Cherry 8 S 45 W 17
"	Plum 5 N 87 E 4
C	L. Asp 20 N 82 E 14
"	W. Oak 8 N 48 W 6
D	W. Oak 25 N 42 E 19
"	do 18 N 9 1/2 W 32

John Fry
Philip Roush

Surveyed the above February 23 1827
Being lot 23, in 510, R 5, 4 1/2 gr, 94 acres,
the west part of said lot (23) was sold to
Andrew Roush on the 11 day of December 1826.
at Auditors sale in the town of Millersburg,
Harrison County, Ohio for the taxes due
thereon for the years 1825 & 1826, the balance
of said lot was sold to said Andrew Roush
Dec 1828. for the taxes for the years
1827 & 1828. of which the above is a correct
plat of the same.

Samuel Robinson
Co Surveyor.