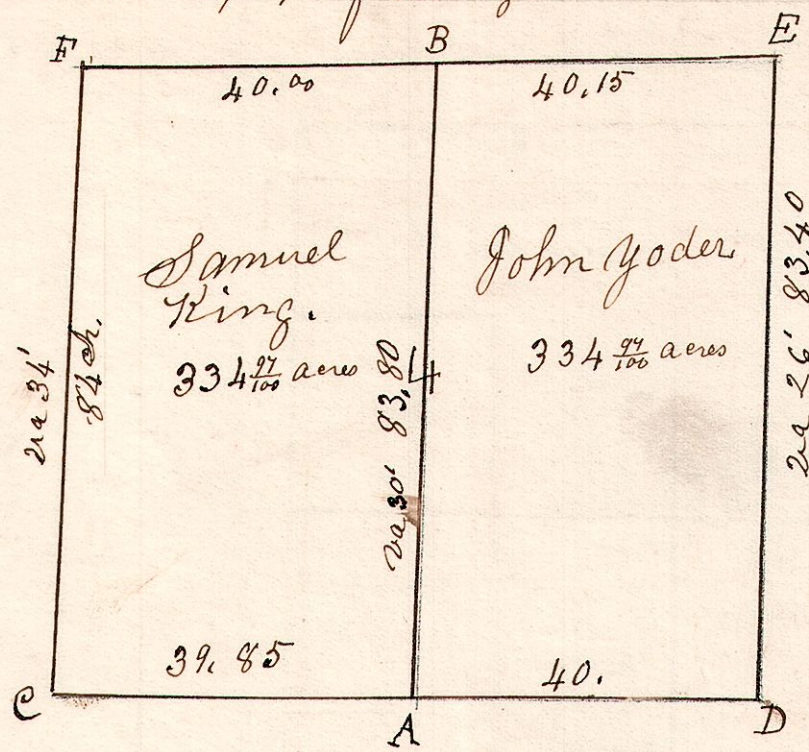


5.9.4.

June 8th 1826. Surveyed Section 4 in Township 9. of Range 5.

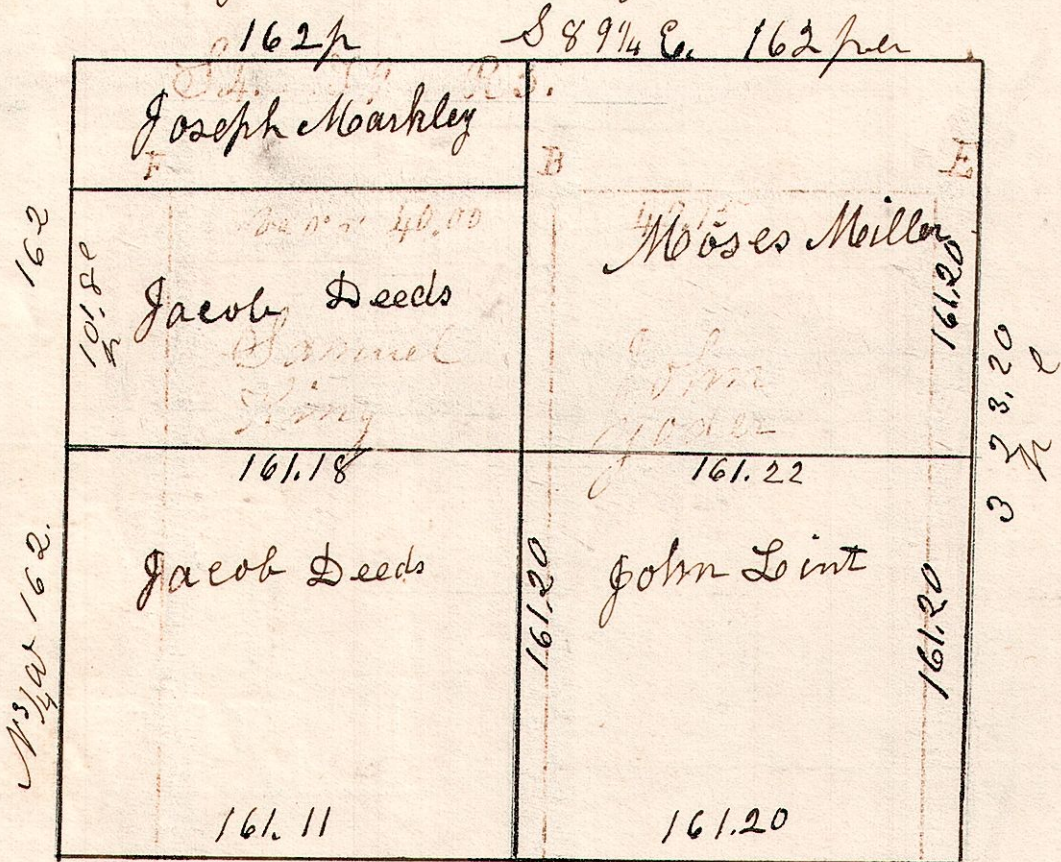


June 8th 1826. Surveyed Section No 4, in Tp No 9, of Range No 5, in the following manner. a division line running N & S for the following persons. Equal divide.

A	W. Oak	20	S 82	W	17.
"	Hickory	10	S 26	W	13.
B	W. Oak	20	S 53	E	21.
"	do	36	N 65	E	21.
C	W. Oak	30	S 14	E	8.
"	Cherry	12	N 3	E	33.
D	W. Oak	12	N 18	W	13.
"	B. oak	25	S 52	E	12.
E	B. oak	26	N 40	W	22.
"	do	18	S 64	E	38.
F	W. Oak	14	S 22	E	19.
"	do	20	N 4	W	20.

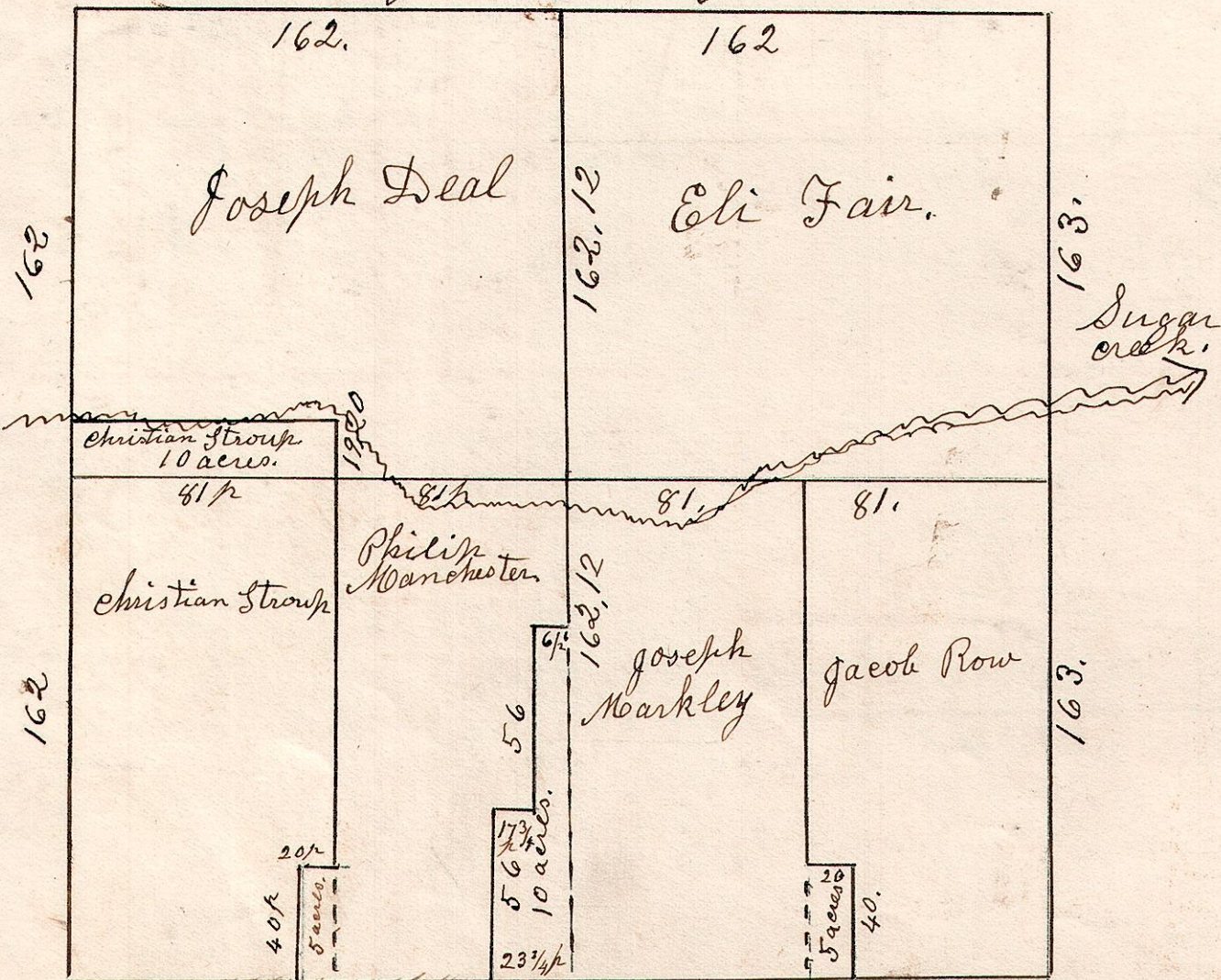
5.8.21.

January 19th 1844. Surveyed Sec 21 in T 8, R 5.



5.8.20

January 1844. Surveyed Sec 20 in T 8, R 5.



24 3/4 to the right. 35 1/2 W