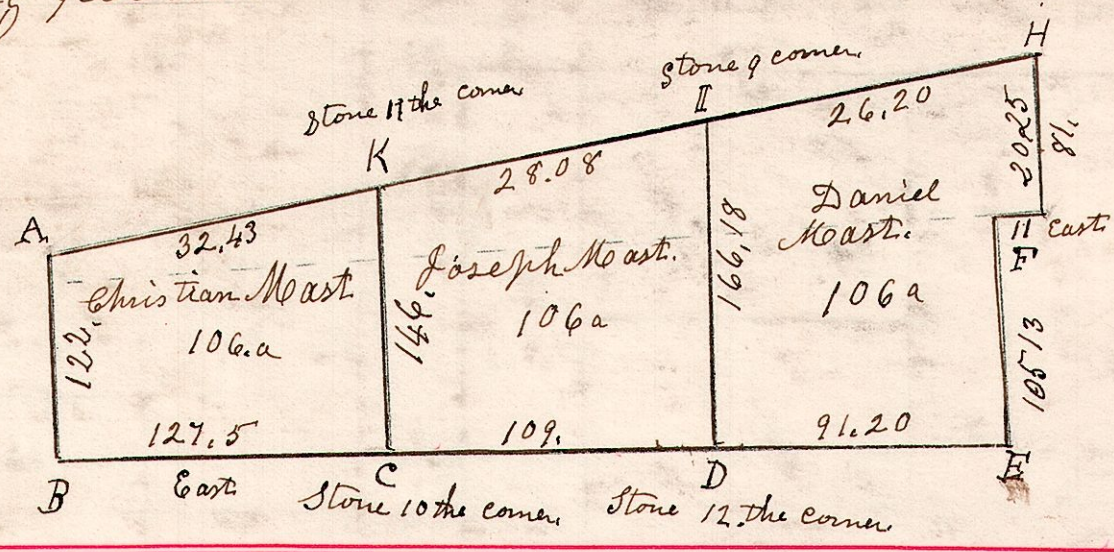


5. 10. <sup>lots 17, 18, 19.</sup> 3<sup>rd</sup> January 3<sup>rd</sup> 1835. Surveyed and divided Lots 17-18 and 19. in the 13<sup>th</sup> gr. S 10. R 5. in the following manner and for the following persons.

4166.10 20.55  
11  
12

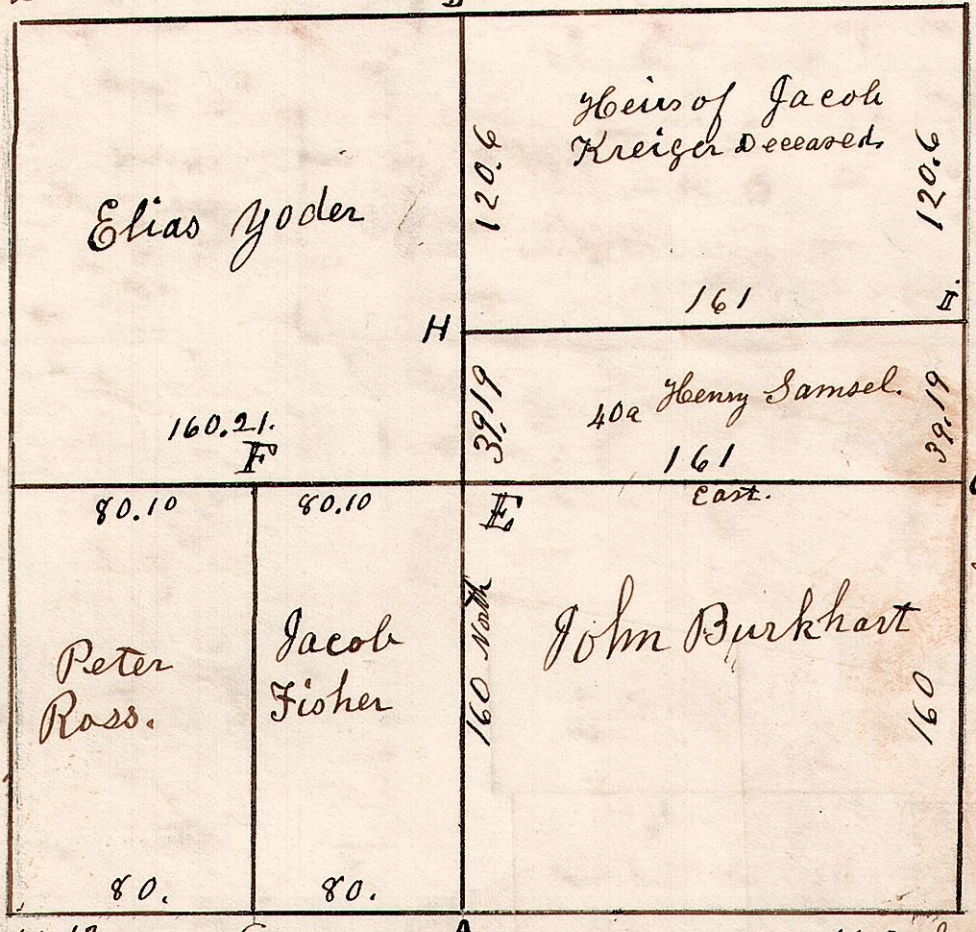


5. 8. 10. January 10<sup>th</sup> 1833. Surveyed Section 10 in T 8 of R 5. in the following manner & for the following persons.

Chain Carriers,  
Daniel Samsell,  
John Burkett jr.

B. Oak 20 S 71 E 25.  
do 30 N 27 E 21.  
W. Oak 12 N 57 E 13.  
do 12 S 10 1/2 E 21.  
W. Oak 12 N 19 W 12.  
do 16 S 75 E 33.

Hickory N 27 E 34  
do S 76 W 42

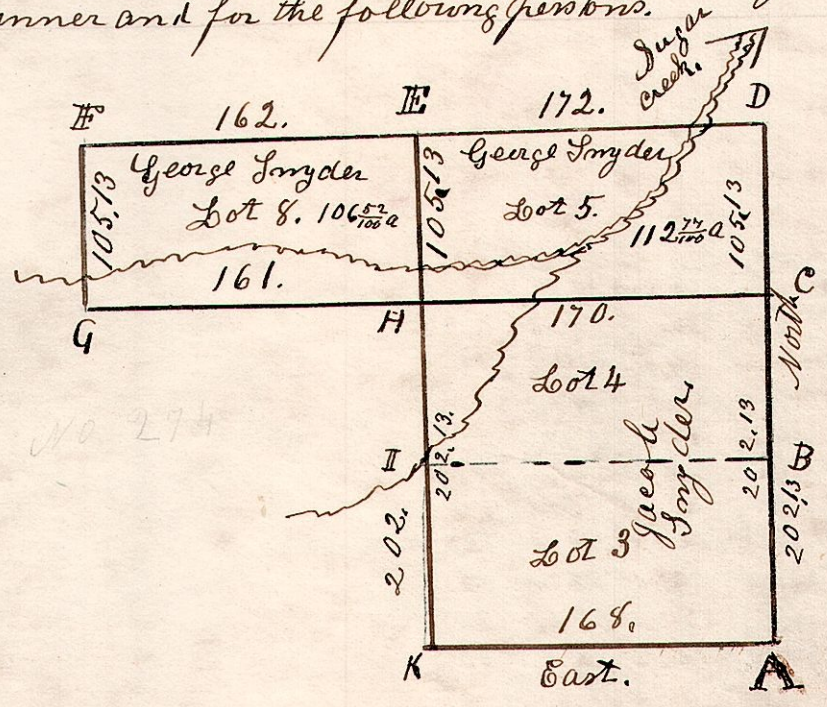


G. W. oak 16 N 30 E 34.  
Hickory 16 N 12 W 36.  
F. Stone 15 the corner.  
E. Stone 15 the corner.  
H. Stone 12 the corner.  
I. Stone 10 the corner

W. Oak 18 S 10 W 28  
Hickory 18 N 22 W 20

W. oak 20 S 24 W 12.  
do 12 N 38 W 12.  
W. Oak 18 S 12 W 2 1/2 E 12.  
B. Oak 24 N 4 W 42.  
W. Oak 18 S 30 E 38.  
do 18 S 20 W 48.

5. 10. <sup>lots 3, 4, 5, 3<sup>rd</sup></sup> December 30<sup>th</sup> 1834. Surveyed Lots No 3, 4, 5, 3<sup>rd</sup> 10. R 5. 3<sup>rd</sup> in the following manner and for the following persons.



A	Chestnut	15	S 25 W	14
"	W. Oak	24	N 41 E	36
B	Maple	12	N 67 W	36
"	W. Oak	18	N 56 E	40
C	W. Oak	18	N 71 E	12
"	Ash	15	S 46 W	54
D	W. Oak	8	S 30 E	16
"	do	8	N 21 W	14
E	W. Oak	24	S 3 E	34
"	do	20	N 36 E	9
F	Q. Asp	15	N 45 E	26
"	do	12	S 43 W	14
G	W. Oak	18	South	5
"	do	15	N 60 E	25
H	Hickory	15	S 23 E	32
"	Asp	24	N 39 W	40
K	Maple	18	South	24
"	W. Oak	15	N 14 E	25

July 2<sup>nd</sup> 1828  
5. 9. 15<sup>th</sup> Surveyed part of the N. W. 1/4 of Sec 15, in Township 9<sup>th</sup> of Range 5. Situated in the N.E. corner of said section for John Brownfield, by order of S. Shane

