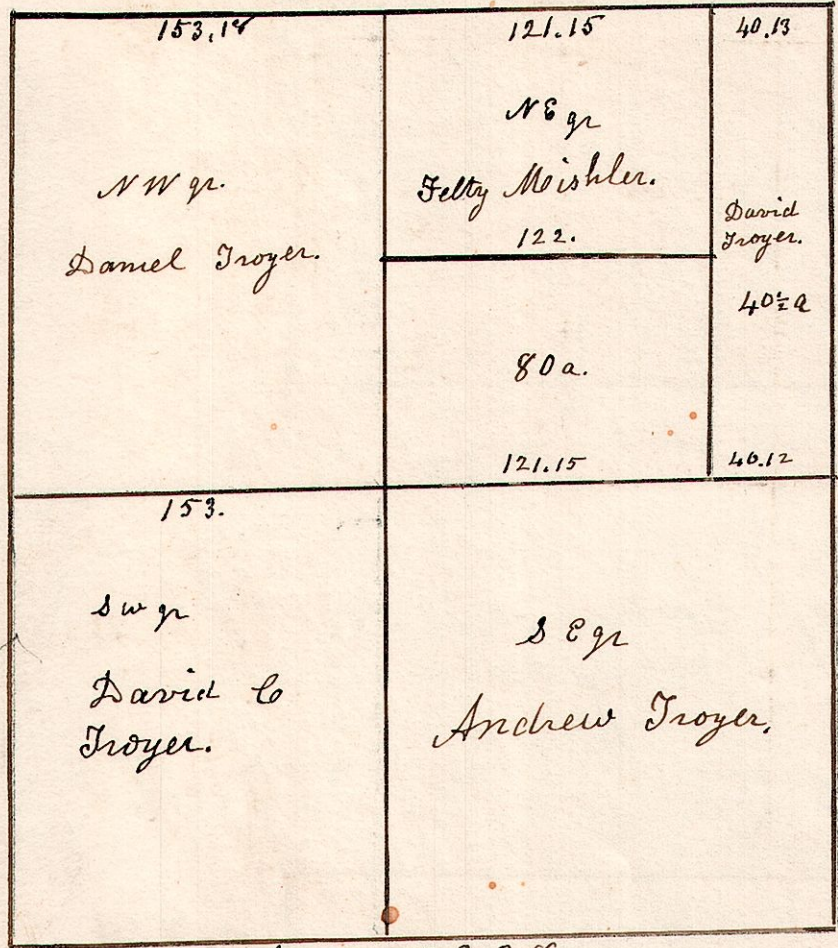
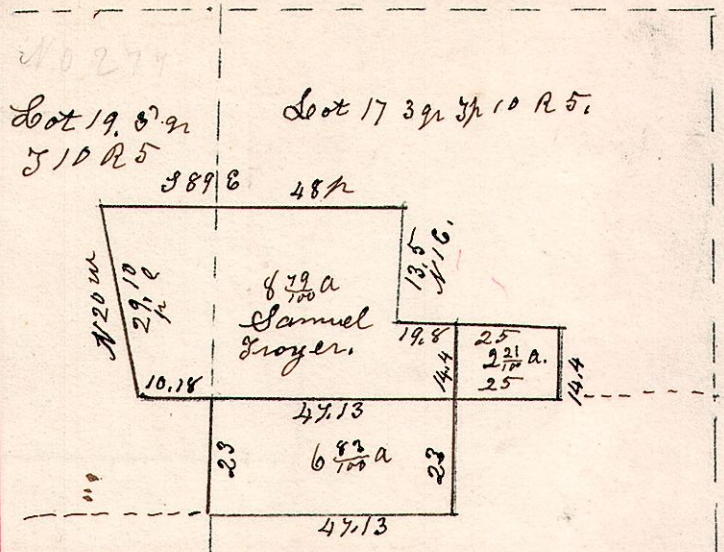


102 April 21st 1831. Surveyed Sec 6. 5 & R 5 in the following manner, and for the following persons.

W. Oak 10 N 24 W 9. Chestnut 28 S 75 E 45.
do 30 S 34 W 36. B. 24 3 25 E 15.
do 14 S 60 W 42. Cherry 13 N 10 E 22.

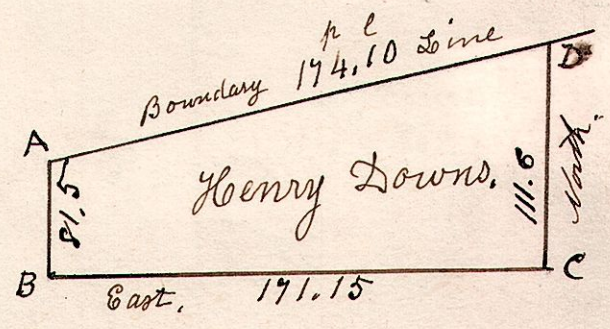


5-10, 17, 20: 3rd gr



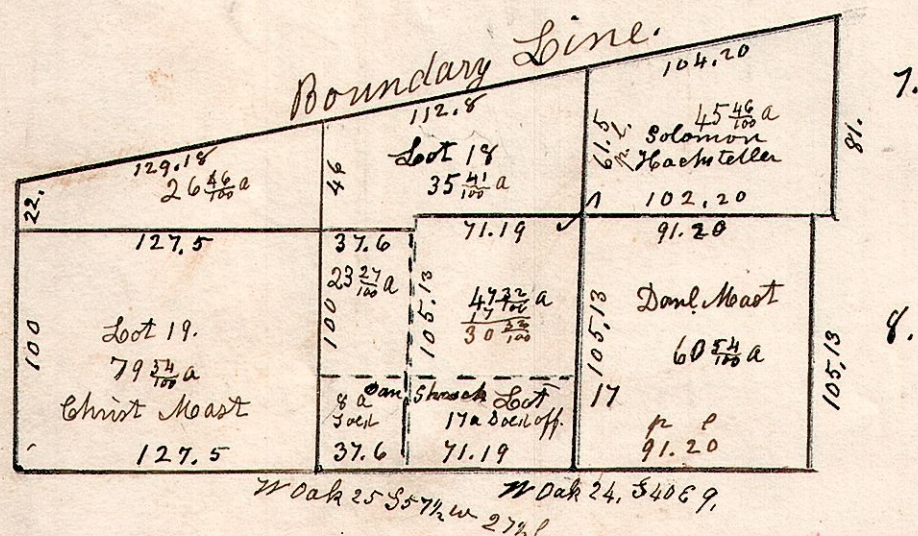
Lot 20 Surveyed for Samuel Troyer Sept 13th 1859.

5.10.7.3rd Sept 24th 1831. Surveyed lot No 7. in T 10. R 5. in the 3rd gr.



E. W. Oak 18 N 5 E 23. Gum 13 S 16 W 30.
F. B. Oak 22 N 21 W 29. W. Oak 16 S 8 W 25.
G. W. Oak 24 S 2 E 38. do 16 N 87 E 36.
Surveyed the 40 acre piece June 3rd 1873.

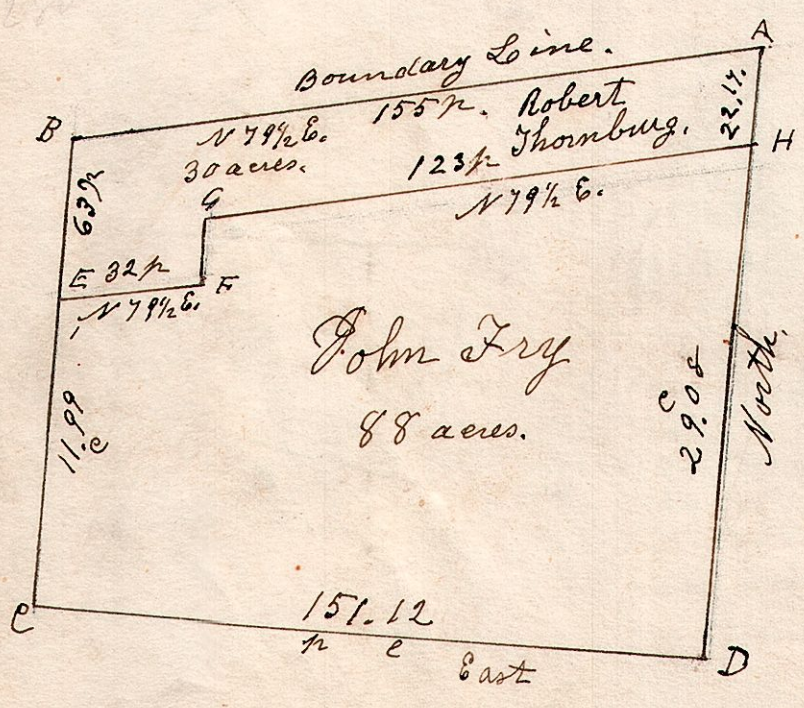
5.10.17.3rd Lots 17, 18, 19. 3rd gr T 10. R 5. Military.



This lot is situated immediately west from the lot I surveyed for Fry in Paint Township.

- A. B. Oak 18 S 21 E 4.
- B. W. Oak 20 N 15 W 61.
- do 18 N 13 E 74.
- C. Cherry 12 N 43 W 15.
- do 12 South 33.
- D. Stone 12 the corner.

5.10.6.3rd March 30th 1827. Surveyed lot No 6. in the 3rd gr T 10. R 5. for John Fry.



A	Cherry	9	S 43 1/2 W	18
"	Plum	5	N 80 E	3 1/2
B	W. Oak	24	S 27 1/2 W	63
"	Dogwood	4	S 14 E	18
C	Cherry	12	N 43 1/2 W	14 1/2
"	do	12	S 1 E	33
D	W. Oak	6	S 32 E	11
"	do	5	N 23 W	14
E	W. Oak	12	S 10 W	15 1/2
"	Cherry	10	N 52 W	12
F	2. Ash	15	N 59 W	30 1/2
"	B. Jack	12	S 38 E	17
G	Honwood	6	S 31 E	5
"	W. Oak	15	S 22 1/2 W	34 1/2
H	Hickory	2	N 5 E	5
"	C. Apple	6	S 2 W	20 1/2