

5.8.4

November 5th 1829 Surveyed Section No 4. 38. R 5.
In the following manner.

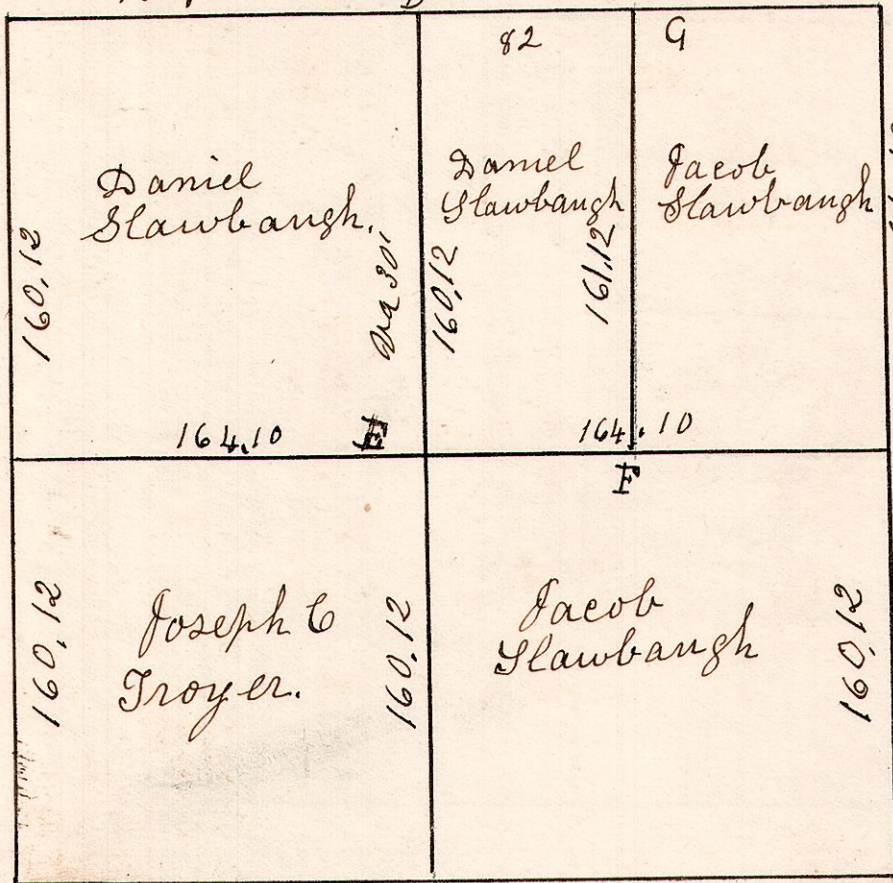
B. Oak 14 S 24 E 44.
W. Oak 16 N 23 E 38.

162.15 W. Oak 15 S 46 W 43.
Maple 16 N 20 E 8.

Hickory 14 S 44 E 34.
elm 9 N 8 W 22.

No 291

Stone in Planes. D



M. Oak 16 S 16 E 25.
do 13 N 51 W 43.

E. 12. W. Oak S 53 E 57.
F. 18. B. Oak South 84.
G. 32. Chestnut N 50 E 29.
" 25. do N 30 W 28
G 15. W. Oak. The corner.

Cherry 20 S 21 E 62.
B. Oak 14 S 75 W 49.

W. Oak 12 S 31 E 9.
B. Oak 6 N 59 W 17.

W. Oak 16 S 6 E 75.
Chestnut 16 N 6 E 88.

5.8.16.

S. E. q^r Sec 16, 38. R 5.

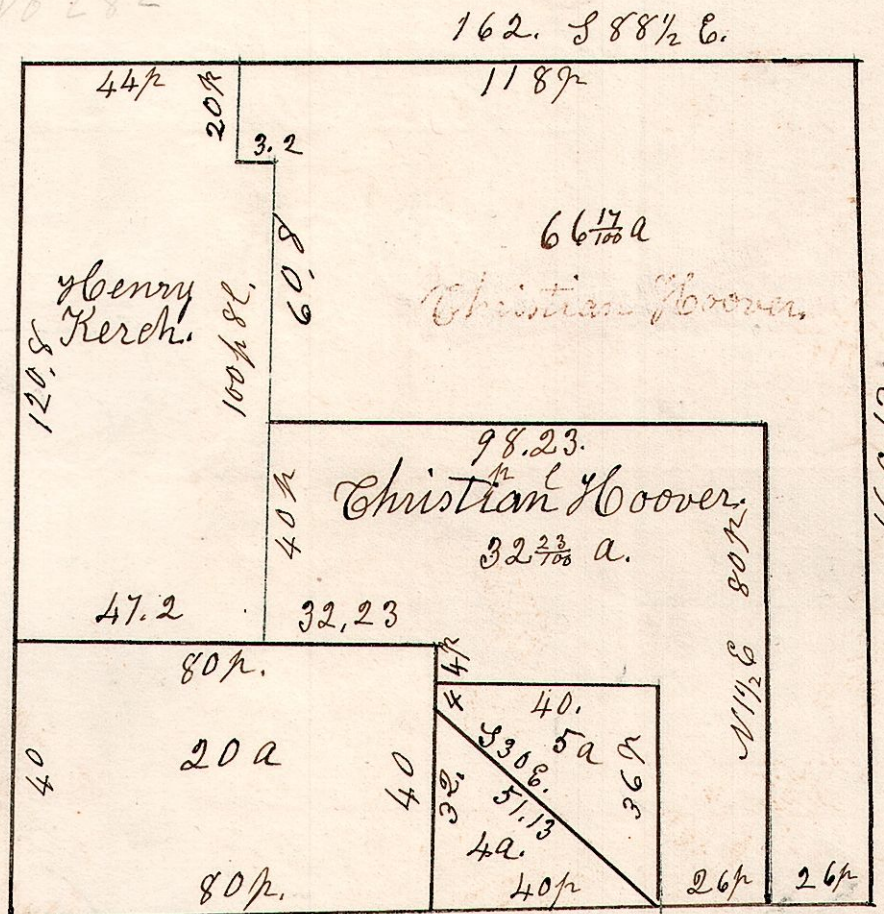
6.8.11

5.8-15.

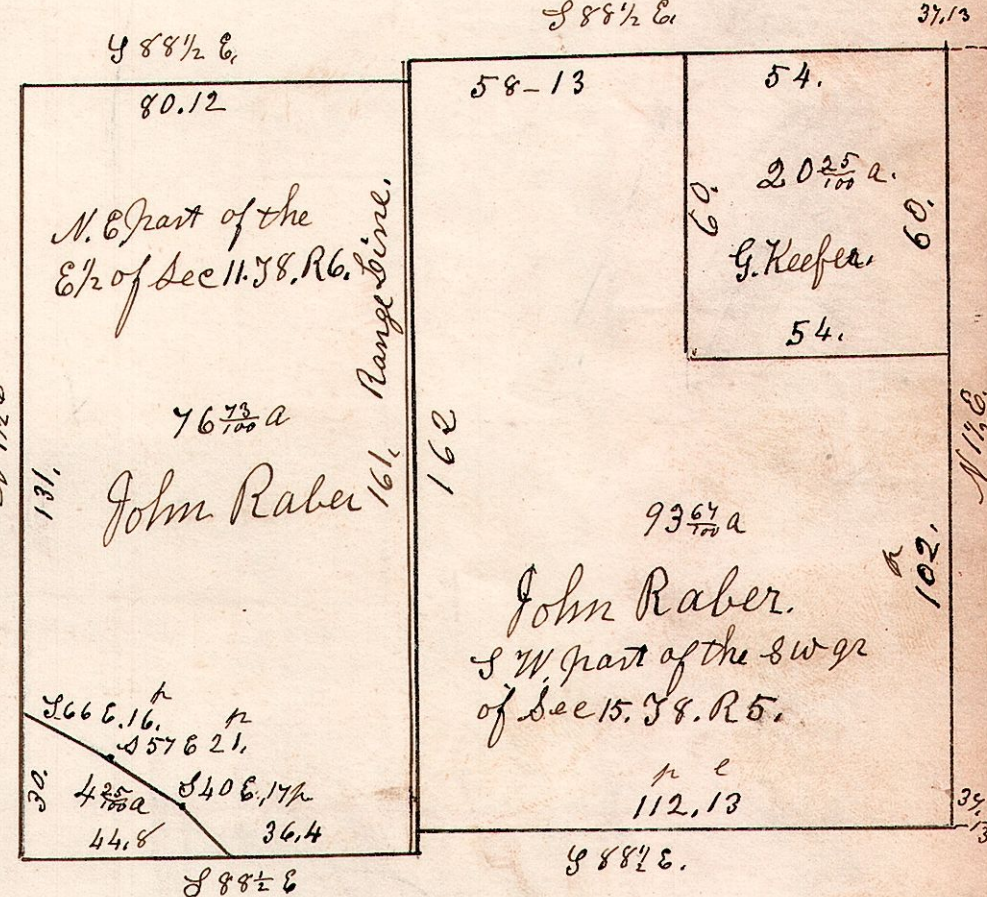
March 14th 1871.

C. Hoover Survey April 20 1870

No 282



Stone corners.

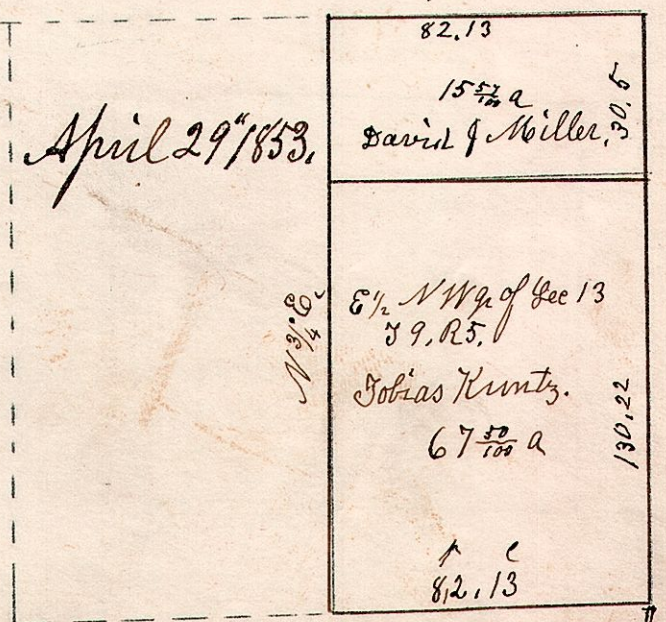
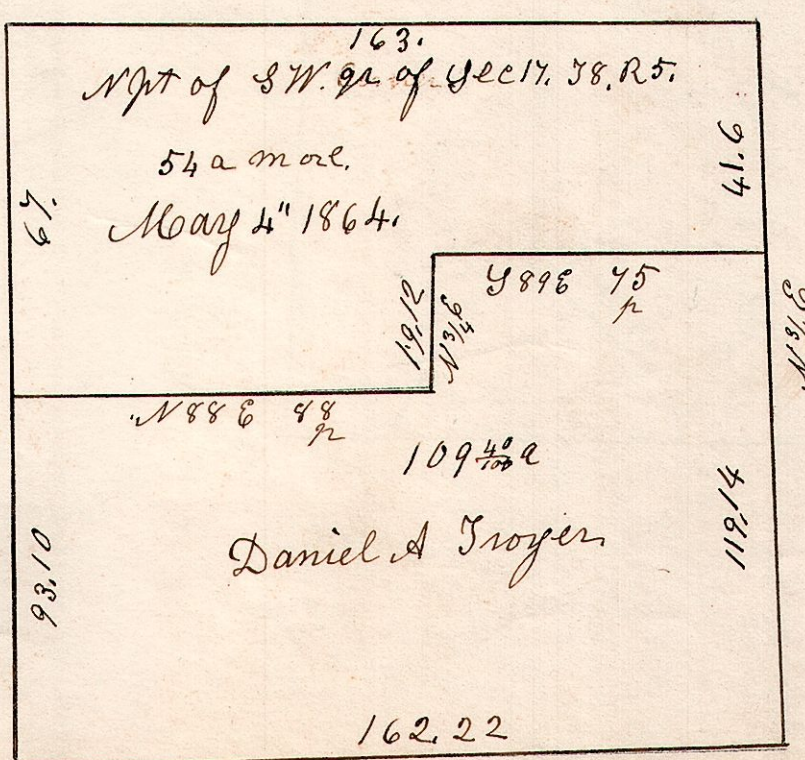


5.8.17.

S 17. 38. R 5

5.9.13.

North west quarter of Section 13. in Township 9. of Range 5.



W. Oak 25 N 35 E 38.