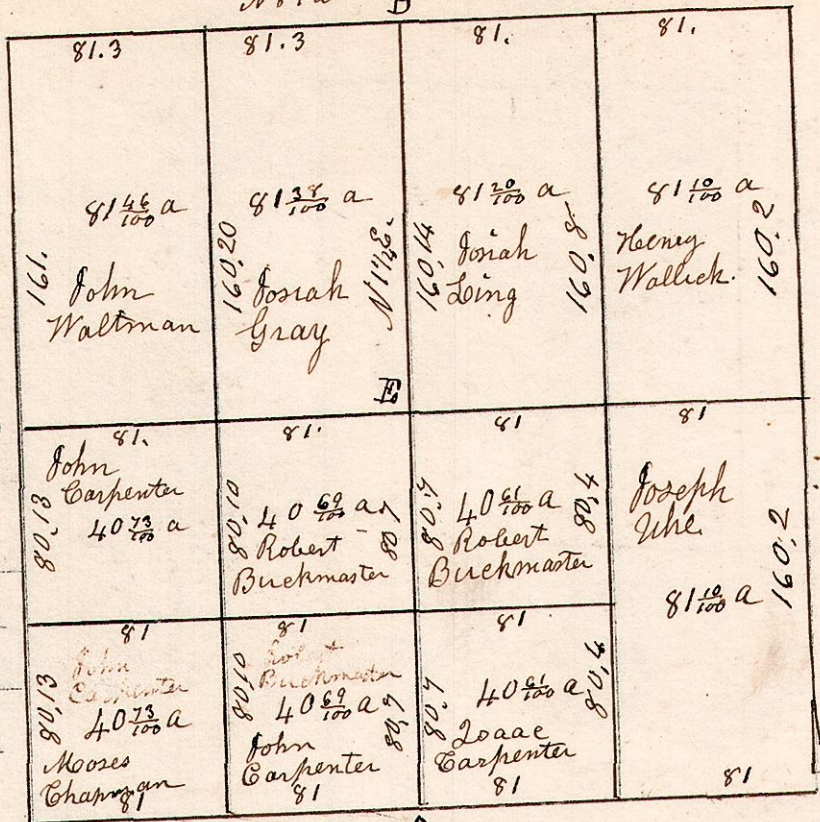


7.8.7.

Section 7. 58. R7.

N89W B



- A. B. Oak 16 S51W 38.
- B. Sugar 14 S65E 12.
- " do 12 S44W 19.
- C. Beech 16 N6E 6.
- D. W. Oak 40 S28W 7.
- E. Maple 16 N56E 6.

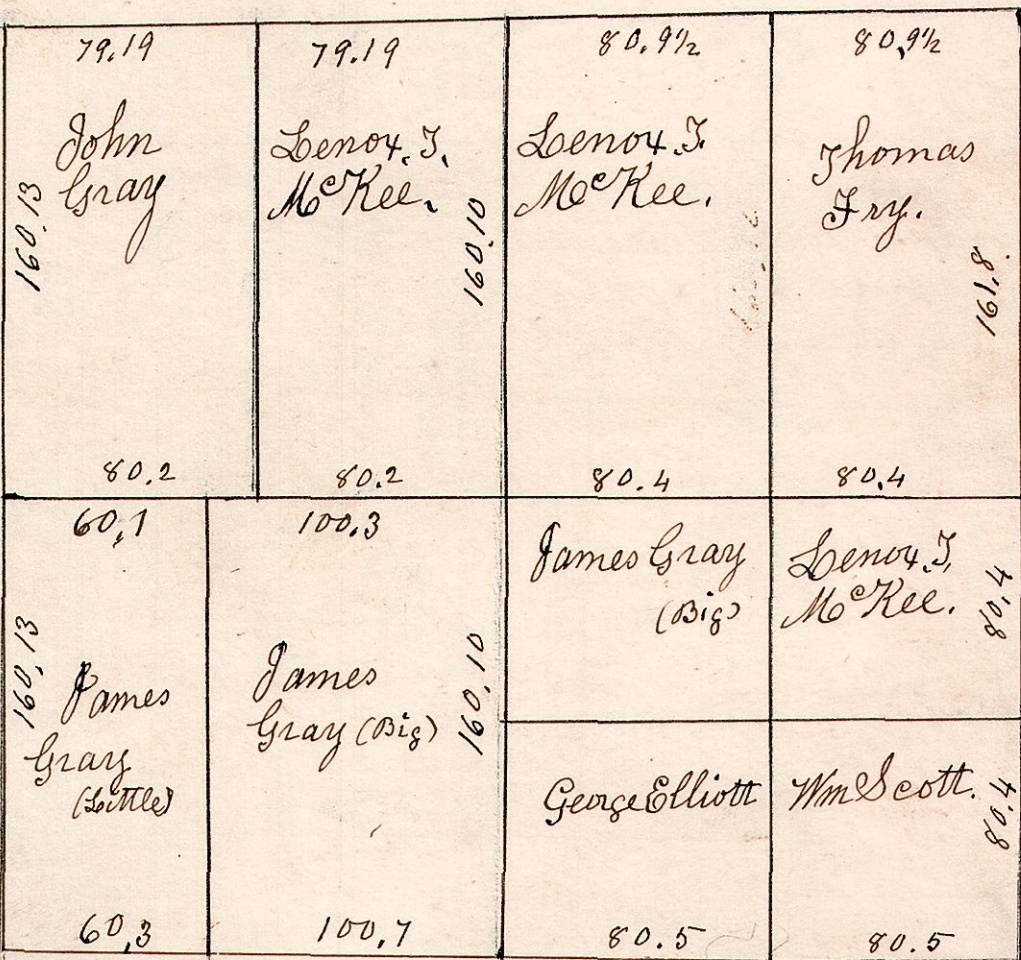
I do hereby certify that the above is a correct plat of Section 7 in Township 8. of Range 7. Holmes County Ohio April 14th 1855 Samuel Robinson, Surveyor.

7.8.10

Section 10. 58. R7.

N235' N of W

December 19th 1844. Surveyed Sec 10. N & S. by N1°E. E & W. S 89 1/4 E.



Stone planted at each corner.

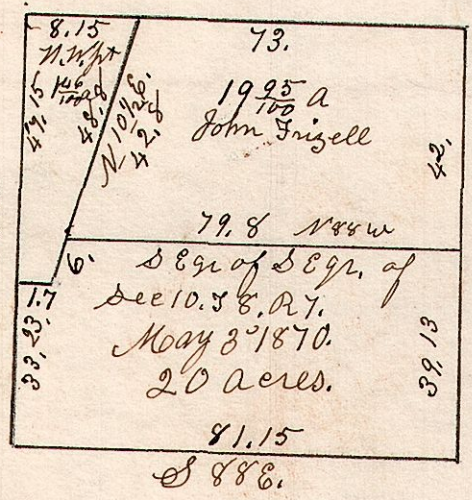
Geo. Elliott 40 a measured 80 x 212 E & W on N side. April 5th 1867 N & S. through center 320, 10

Hickory 2 S 80 E 9. Beech 8 N 13 W 16.

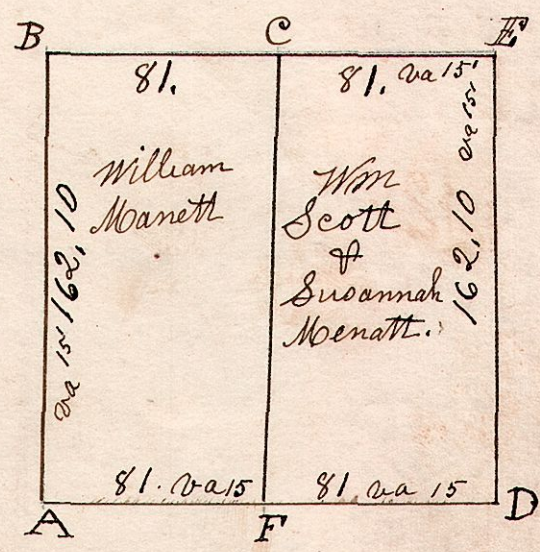
7.8.10. S.E. qr. of S.E. qr. of Sec 10. 58. R7

7.8.10. ^{SW} September 21st 1830. Surveyed the S.W. qr of Section 10, in 58. R7. in the following manner and for the following persons.

March 15th 1872



342



- A Hickory 28 S55E 5
- " Maple 12 S57W 22
- B Stone 15 the corner
- C W. Oak 20 S30W 32
- " Hickory 14 N16E 43
- D Maple 18 S63E 54
- " Hickory 12 N12W 37
- E W. Oak 16 S40E 32
- " B. Oak 33 S39W 22
- F Hickory 15 N58W 47
- " do 12 N34E 40