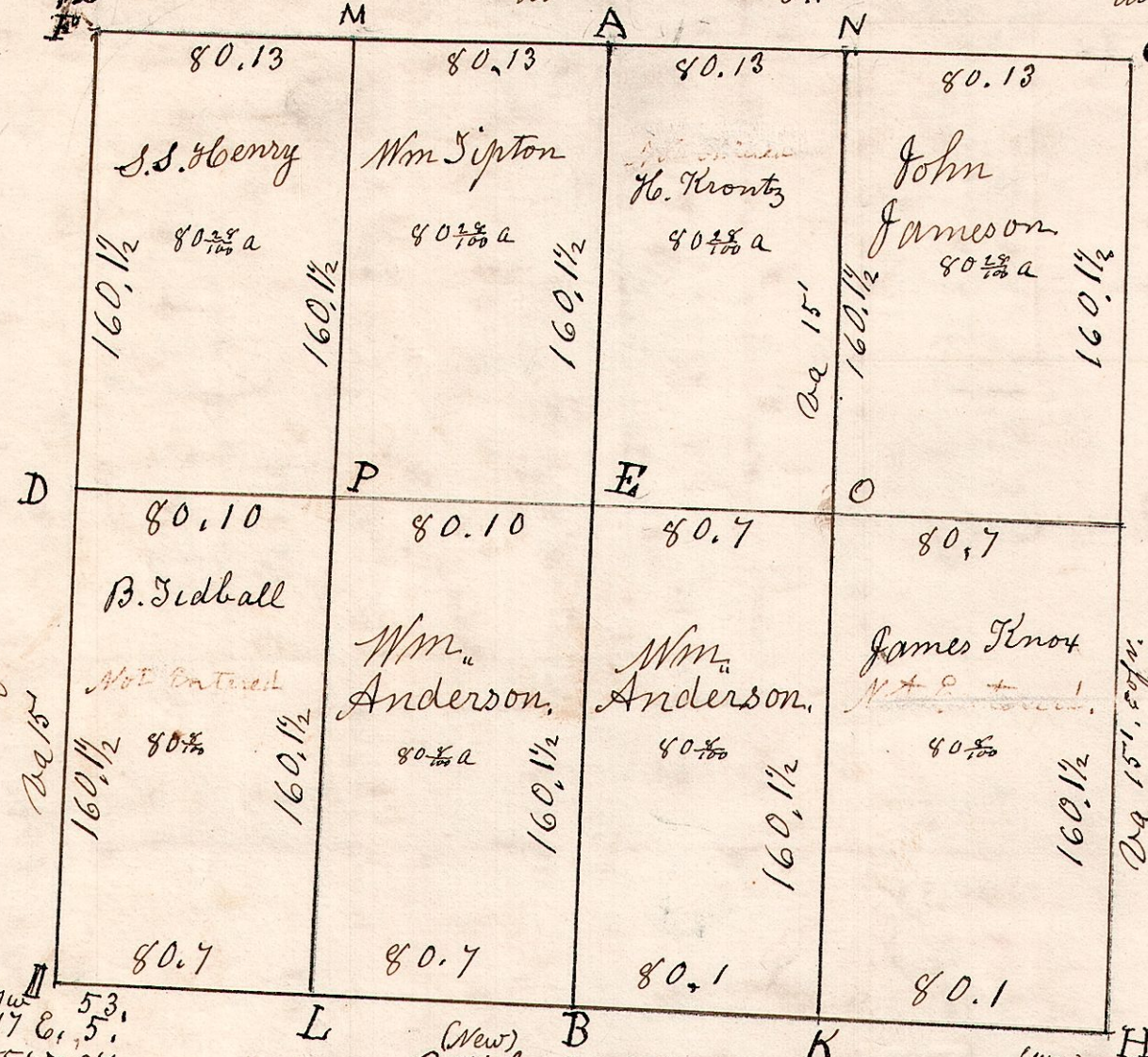


7.9.20.

February 12<sup>th</sup> 1827.  
 Surveyed Section 20, T9, R7,  
 in the following manner.

Sugar Tree 24 N70W 26.  
 do 12 S74W 10.  
 Maple 14 S88E 17.  
 do 20 S1W 34.  
 W Oak 20 N40E 10.  
 do 14 S6W 36.



L	Beech	8	N9E	11
"	Hickory	9	S61W	32
M	W Oak	24	S33W	18
"	Beech	23	N85E	33
N	Beech	15	N89E	15
"	do	10	N50 1/2 W	22
E	W Oak	20	S87W	42
"	Maple	12	N9W	24
O	Dogwood	6	S54W	20
"	B. Oak	24	N14W	36
"	Poplar	8	S31W	20 (view)
P	Maple	15	S64W	9
"	do	8	N79E	19 1/2

Beech 20 N47W 53.  
 Hickory 12 S55W 37.

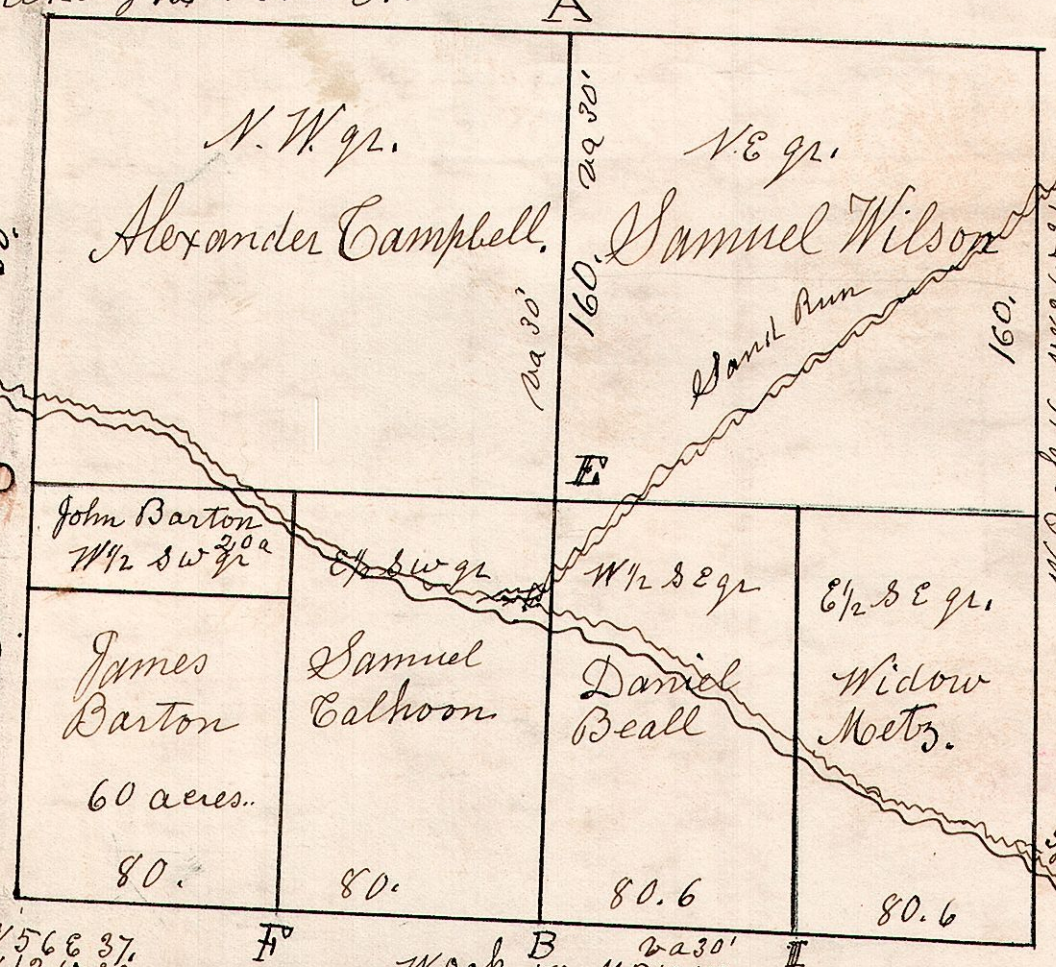
(New) B. Walnut 4 S81E 41.  
 R. Oak 15 N57W 21.

(New) W. Elm 18 N31W 15.  
 B. Oak 12 S72E 6.  
 do 12 S49W 20.

February 26<sup>th</sup> 1829. Surveyed Section 21, in the following manner

7.9.21.

Beech 20 N47W 53.  
 Hickory 12 S55W 37.  
 W. Oak 12 S32E 29.  
 do 24 S52W 37.  
 W. Elm 18 N31W 15. (new)



II	Poplar	16	N8W	14
"	Hickory	12	N12W	32
H	W Oak	15	S65W	28
"	Beech	6	S31E	3 1/2
G	Elm	12	N23 1/2 W	13
F	Sugar	18	S87E	12.
E	Stone			Stone corner.

B. Oak 24 N56E 37.  
 Hickory 24 N12W 32.

W. Oak 18 N5W 18.  
 do 24 S58W 25.  
 W. Ash 30 N18E 29.

319.16

A. W. Oak 12 N42E 20.  
 W. Oak 24 S52W 37.

7.8.7.

Section 7, T8, R7.  
 162.2



Jos. Uhl's 1/2 of 1/2 of N.E. qr. of  
 S7, T8, R7. = 15 1/2 acres more or less.  
 Jos. Uhl is 77 perches on the S side.  
 + 19 1/2 162 taken from former survey.  
 Center of the creek the line.  
 From A to B: fell short 28 links.  
 August 19<sup>th</sup> 1851.

W. Oak 40 S27W 25.  
 Chestnut 15 N84E 13.