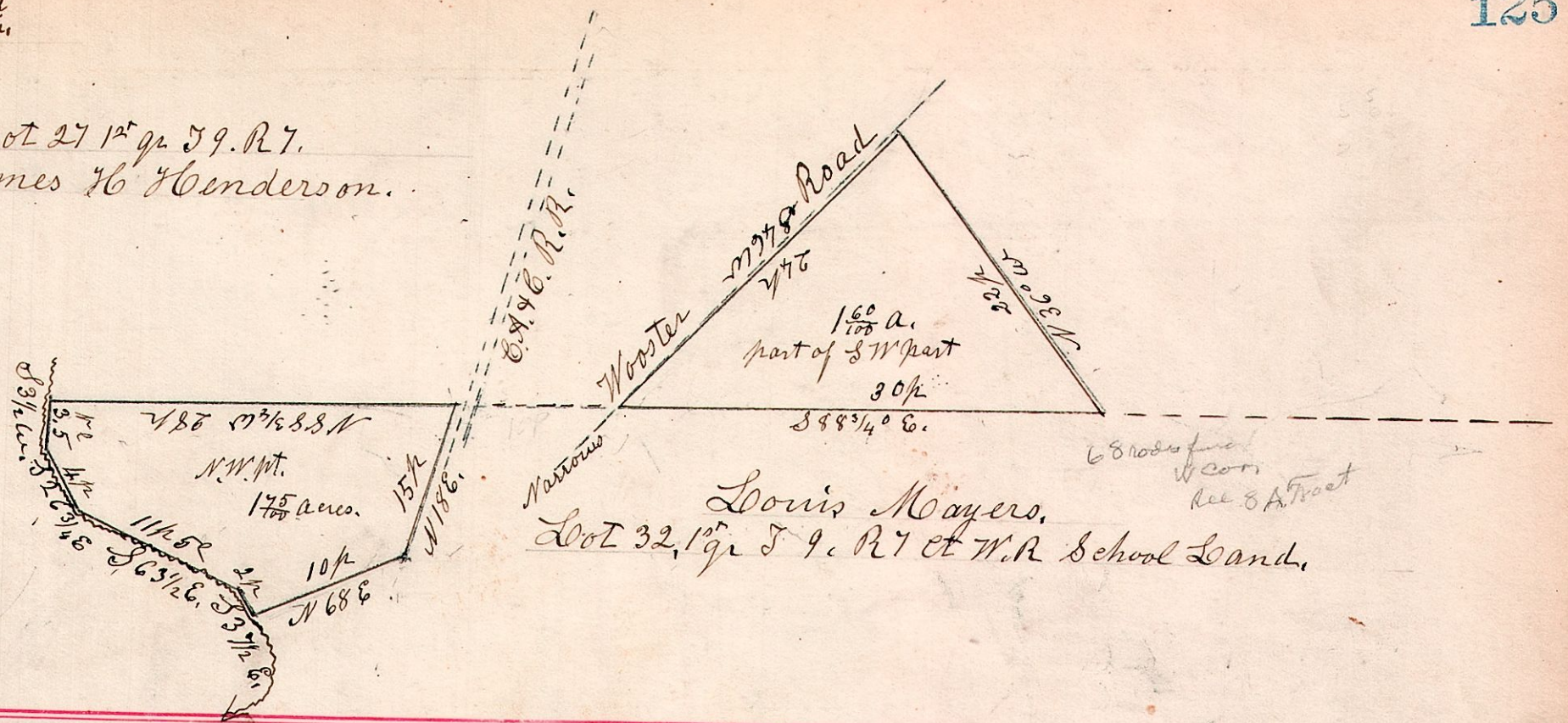


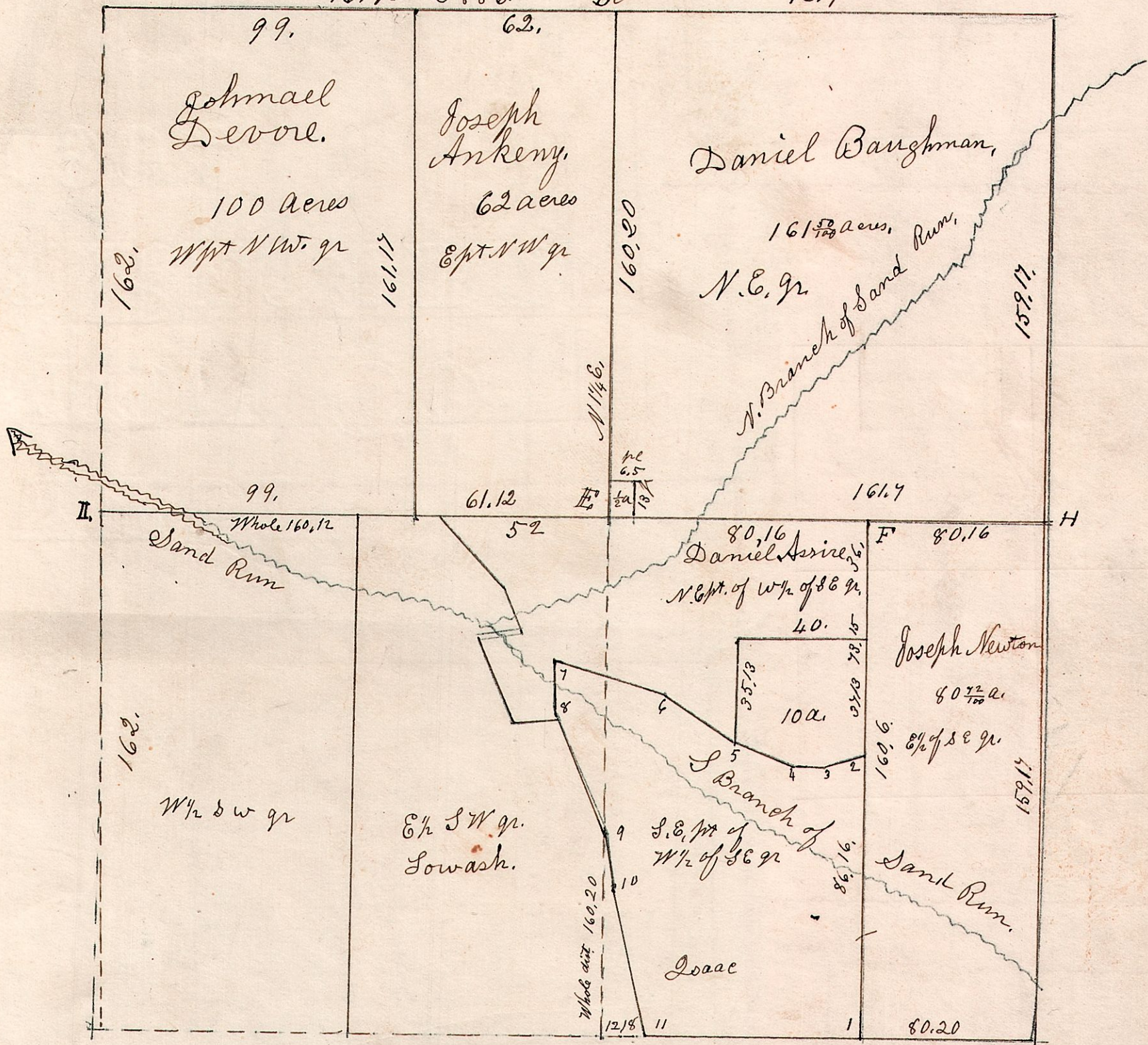
Lot 27 1st q. T9. R7.
James H Henderson.



Louis Meyers.
Lot 32, 1st q. T9. R7 et W.R. School Land.

7. 9. 21.

August 29th 1861, Surveyed part of Sec 21. T9. R7.
Surveyed 10 acre piece Oct. 20th 1868.
Daniel Assire Employer.
161 1/2. S88E. B. 161 1/2.



B	B. Walnut	4	S 81 E	41
	B. Oak	15	N 57 W	21
E	B. Walnut	6	N 43 E	5
	R. Elm	8	S 58 1/2 E	28
F	Beech	20	N 38 E	12
G	Hickory	15	N 79 W	19
H	W. Oak	40	N 36 W	19
I	Maple	8	S 76 E	15
"	Hickory	8	S 23 W	30