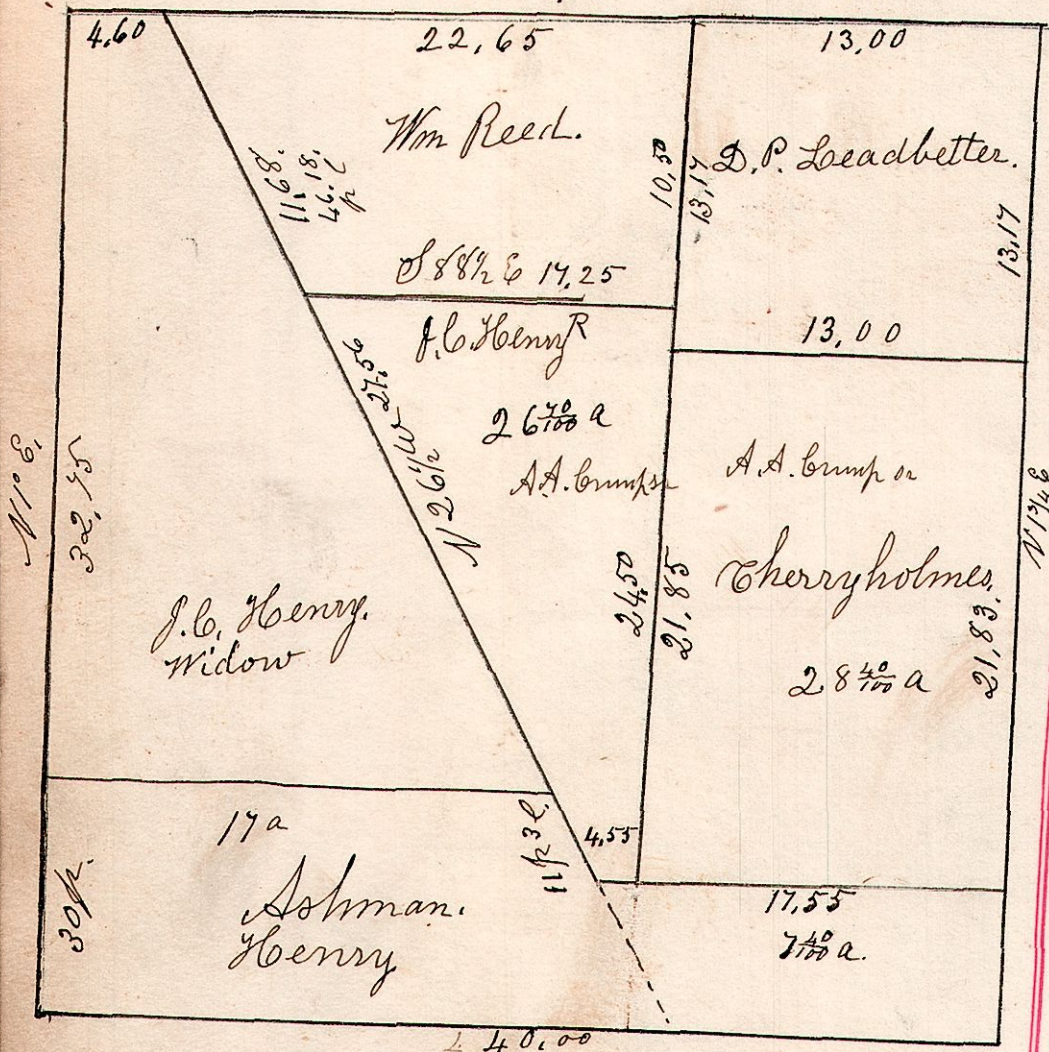
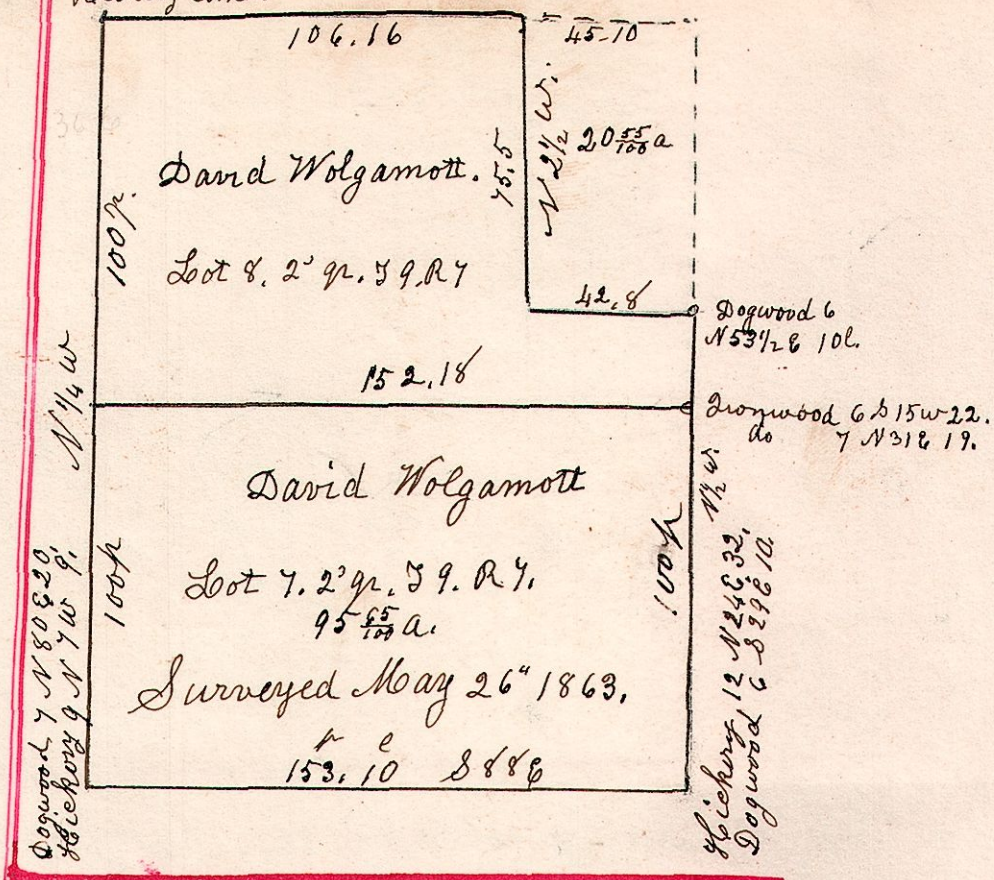


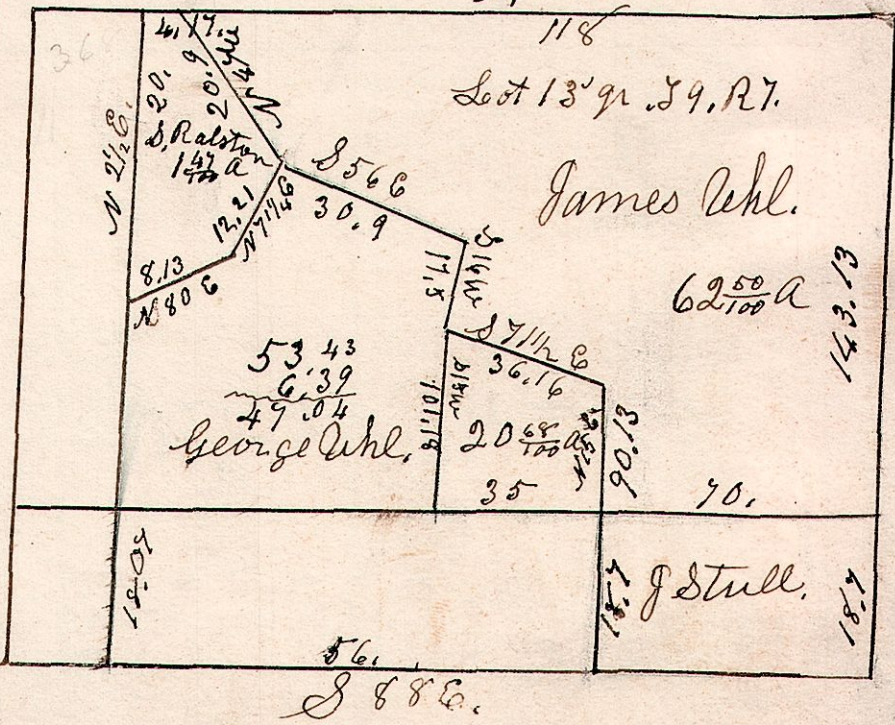
7.9.20. N.W. q. Sec 20, T9, R 7.
June 8th 1868.
Surveyed for A.A. Crump &
S 87 3/4 E.



7.9.7. 188. 2 1/2
Hickory corner.

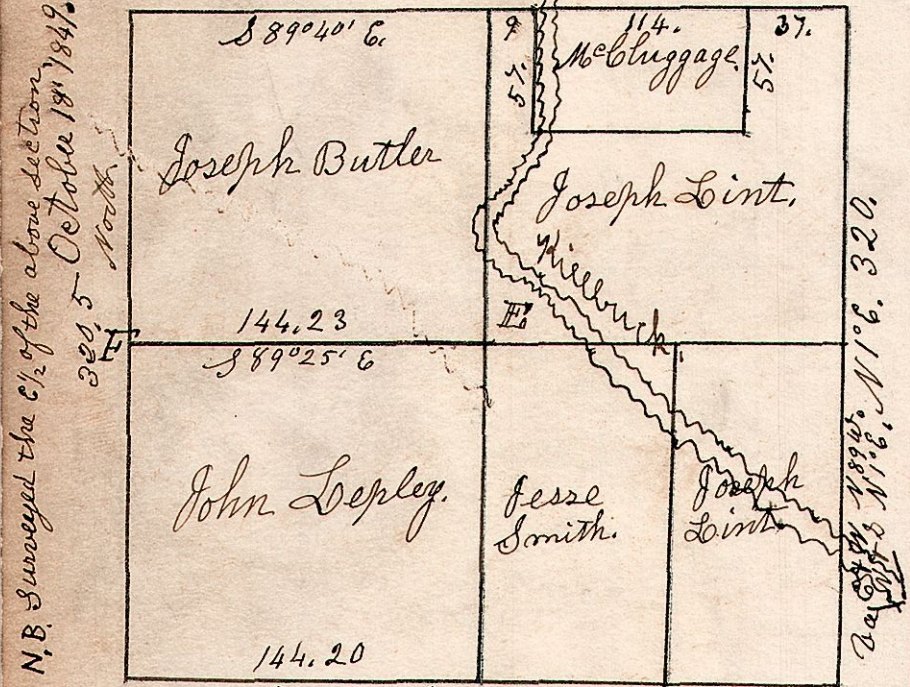


7.9.1. Lot 1, 3 q. T9, R 7, School Land, April 1872.



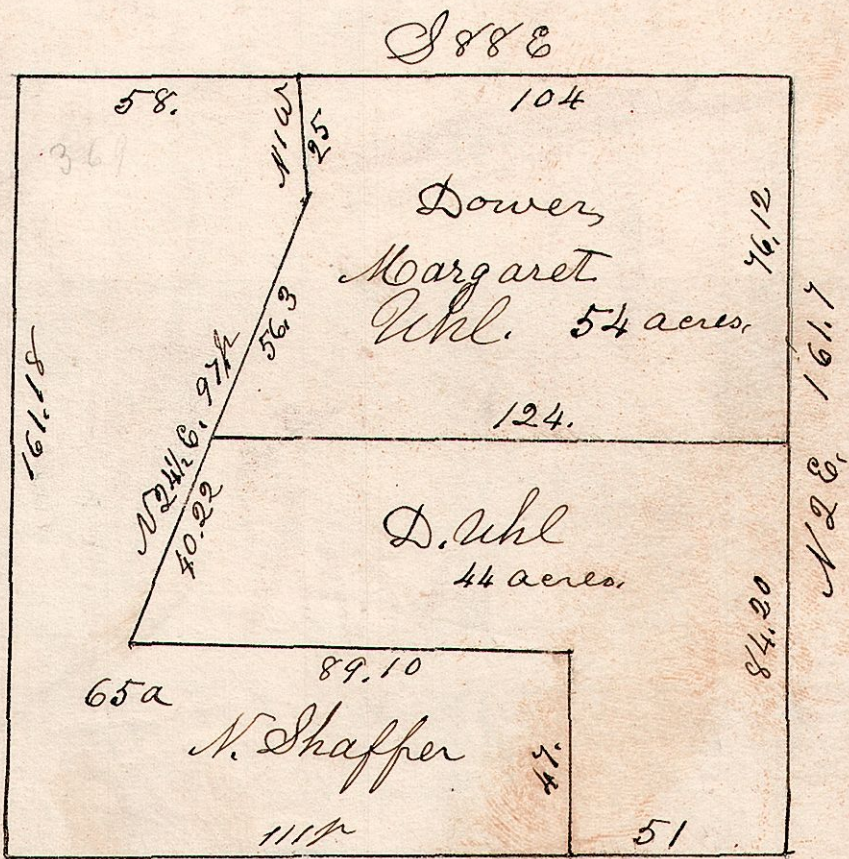
7.8.25. December 5th 1832.
Surveyed the W 1/2 of Sec 25,
in Sp. 9. of Range 7.

W. Oak 30 N 40 E 14. S. Oak 16 S 26 W 25. W. Oak 14 N 20 W 14.
do 20 S 54 E 45. 145 do 16 S 28 E 20. Beech 9 S 22 E 35.

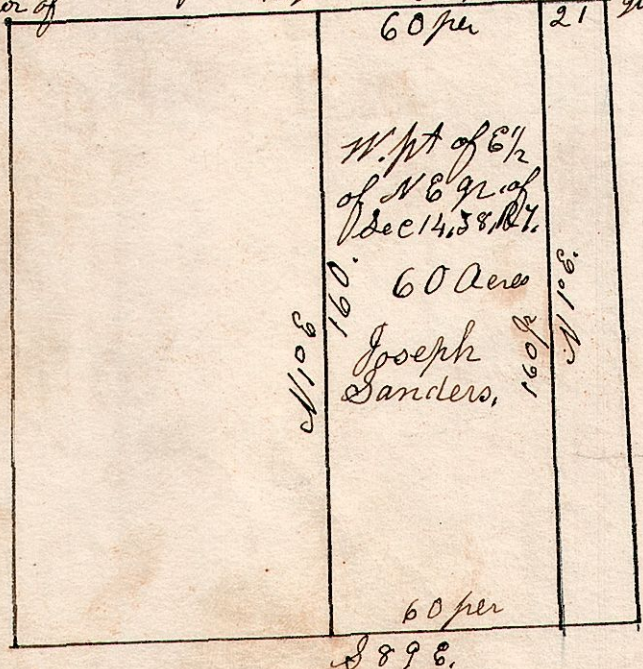


N.B. Surveyed the E 1/2 of the above section
Oct 5th 1849.
East, W. Oak 12 West 1. B. Oak 14 East 17. Not
do 8 N 19 E 19. Gum 9 N 73 W 3. found.
E. Welm 8 N 48 W 28.
do 12 S 69 W 23.
F. Stone 15 the corner.

7.8.20. N.E. q. Sec 20, T9, R 7.



7.8.14. N.E. q. of S 14, T9, R 7.
W. cor. of 1/2 q. cor. S 89 E. N. cor. of 1/2 q. cor.



Stone corner planted.

Samuel Aehl gr
Surveyed April 20th 1871.
Samuel Robinson }
D. Sowash } Comrs
John Patterson }