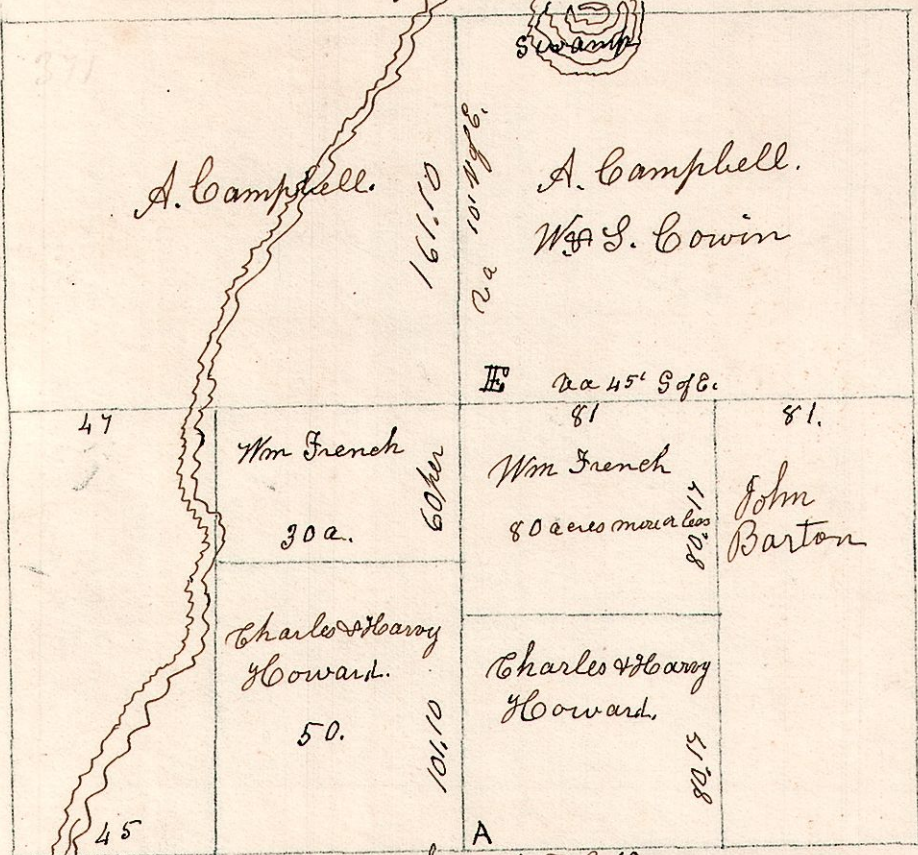


7.9.22. Sept 11<sup>th</sup> 1841.

Surveyed Sec 22, in T9. Range 7.

B. Oak 13 S 44 E 30. Beech 20 N 47 W 53.  
W. Oak 12 S 55 W 39.

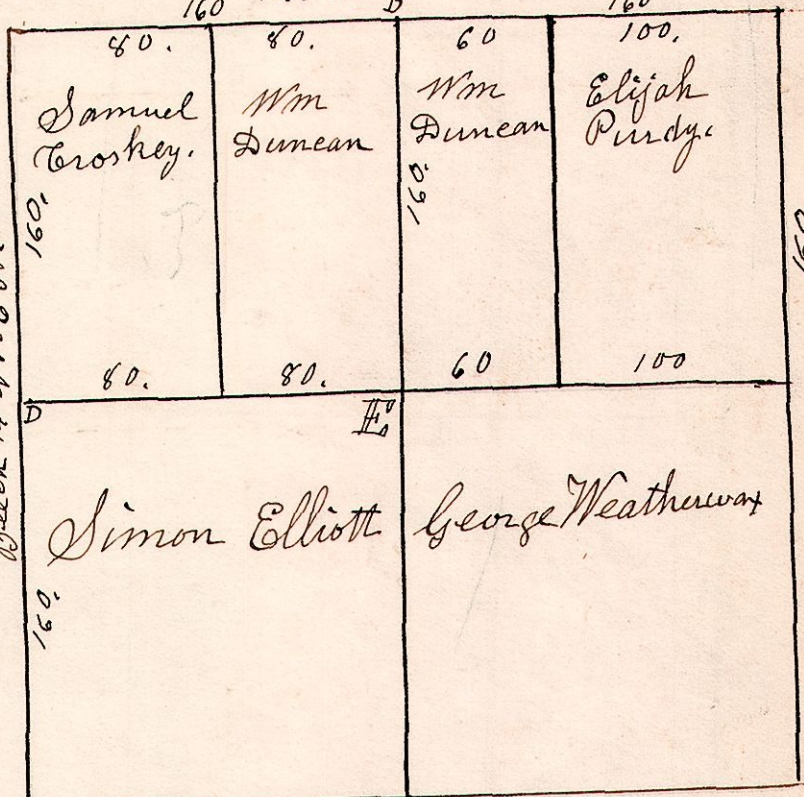
Surveyed for R. French & W. Kellogg  
from H. H. H. 160.14  
Whole do 149.323.5  
S. White Oak 15.  
136.53.



W. Oak 18 S 50 E 10.  
S. Oak 12 S 50 W 40.  
Stone to be planted at each corner.

7.8.19. May 1<sup>st</sup> 1834. Surveyed  
Sec 19. in T9. R. 7.

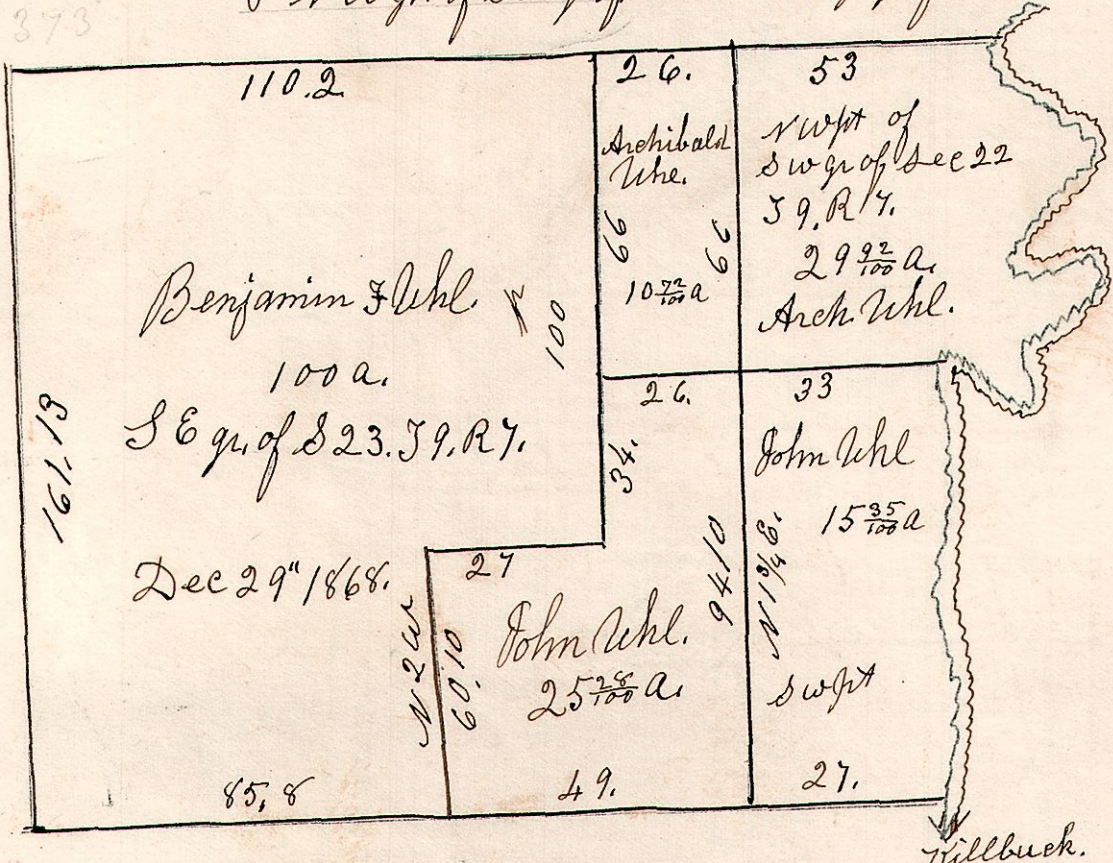
Maple 12 N 55 1/2 E 10.  
W. Oak 14 S 57 E 17.



W. Oak 12 S 42 1/2 E 14.  
Do 30 S 46 W 35.  
Maple 15 N 29 E 45.  
Do 12 N 14 E 46.

E. Stone @ the corner

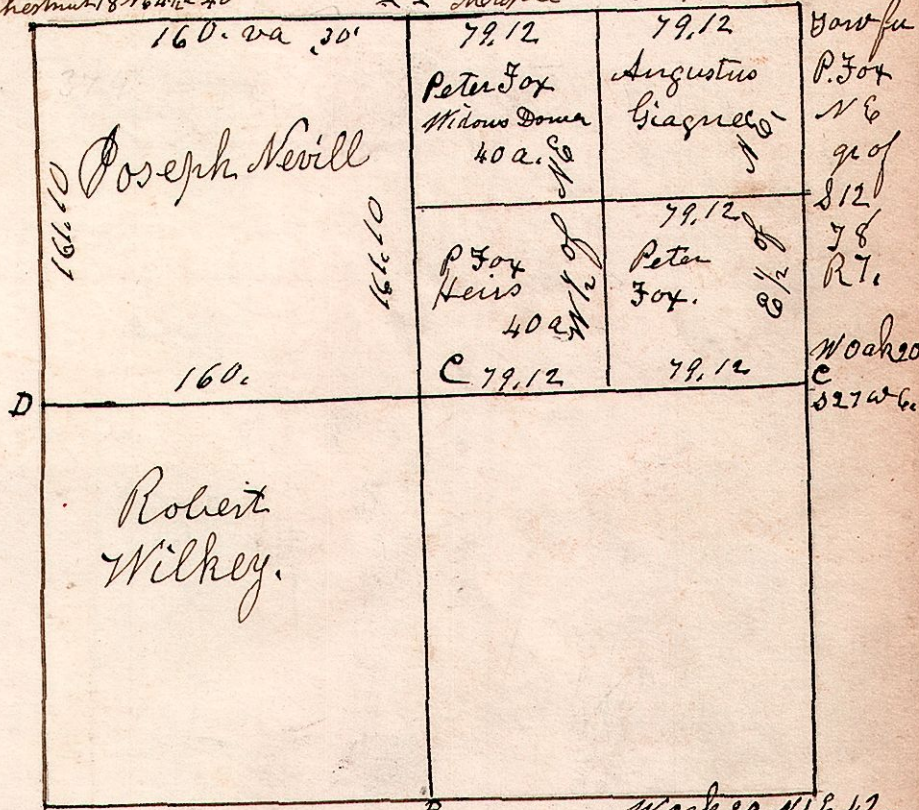
7.9.23. South east qr of S 23, in T9. R. 7.  
& N. west of S. west of S 22, in T9. R. 7.



Tillbuck.

7.8.12. August 9<sup>th</sup> 1828. Surveyed Sec 12  
Township 8. of Range 12.

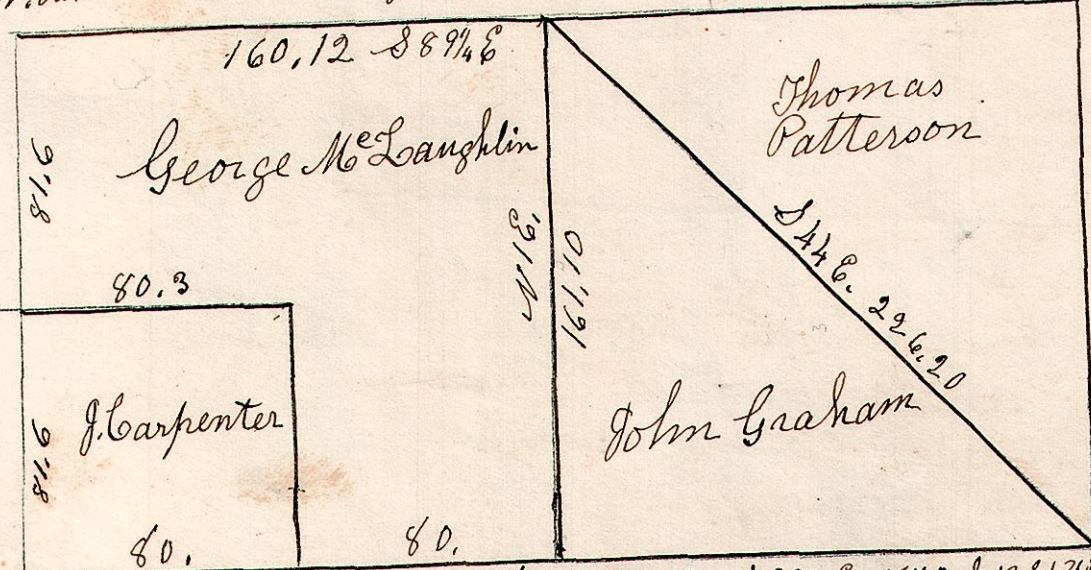
B. Oak 16 S 64 E 28  
Chestnut 18 N 6 W 40  
Maple 12 S 50 W 22.



W. Oak 20 N 16 E 42.  
do 16 N 23 W 12.  
do 14 S 70 W 22.

7.8.18. May 27<sup>th</sup> 1856. Surveyed  
the S 1/2 of Sec 18. T 8. R 7.

B. Oak 12 S 22 E 13. W. Oak 5 East 1. Maple 18 N 42 E 23.  
W. Oak 15 N 81 W 11. B. Oak 8 N 43 1/2 W 6 1/2. Beech 14 N 57 E 38.



Elm 24 N 3 W 21. 159.18 W. Oak 16 N 3 W 13. S 89 1/4 E. W. Oak 12 S 42 E 14.  
S. Oak 12 S 8 W 20. B. Oak 24 S 40 W 49. do 30 S 86 W 35.

N. W. cor of Sec W. Oak 34 N 51 W 15.  
Maple 7 S 52 1/2 E 27.

Surveyed S & E qr August 8<sup>th</sup> 1851

March 24<sup>th</sup> 1857. Surveyed the N 1/2  
for Peter Fox.

D. Beech 12 S 57 W 26. C. W. Oak 16 N 3 W 30.  
" Gum 15 N 48 W 48. " do 20 N 40 E 22.  
A. W. Oak 30 N 85 E 41.  
" do 12 S 67 W 42.  
B. Maple 12 N 55 1/2 E 10.  
" W. Oak 14 S 57 E 17.

April 25<sup>th</sup> 1870.  
Surveyed for Widow & Heirs of Peter Fox.