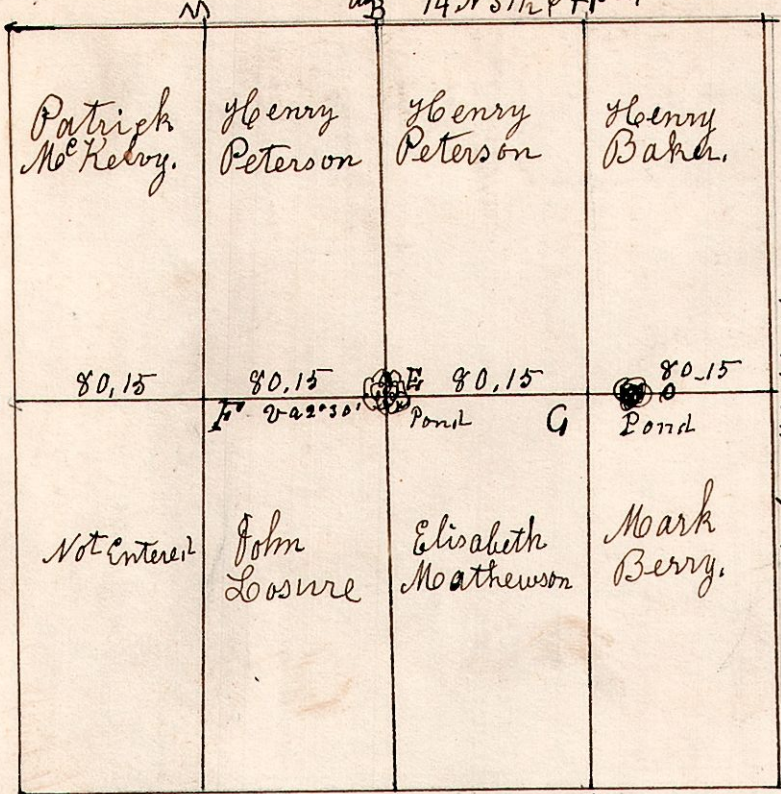


14.18.34. January 15<sup>th</sup> 1830. Surveyed Section 34, in T18, R14.

as follows.  
W. Oak 10 S 68 W 23.  
do 14 N 37 1/2 E 152.



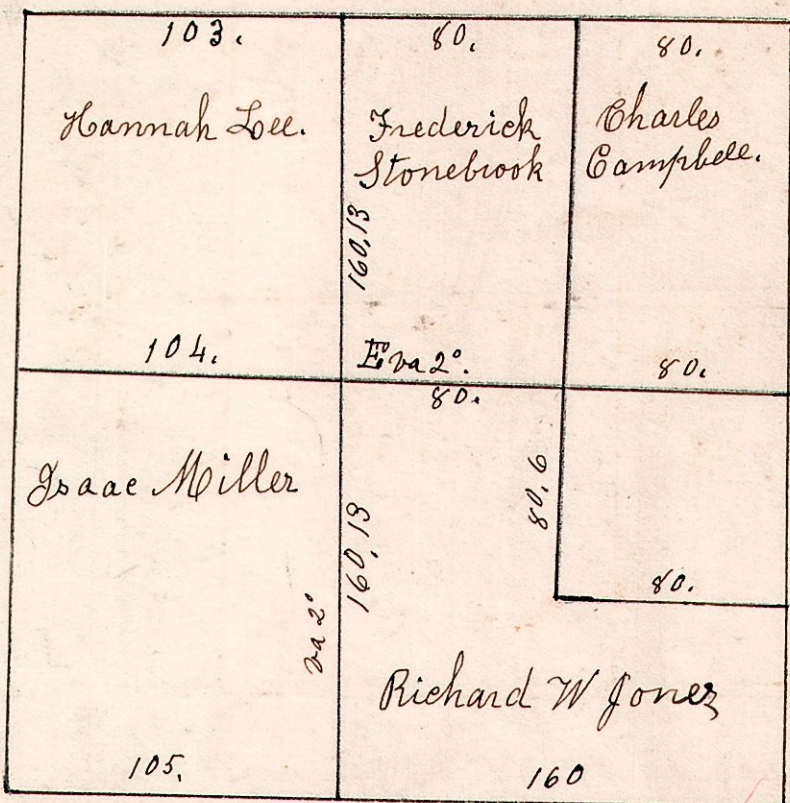
Sum 9 553 57.  
do 7 827 35

E	Elm	15	N10W	19	II	Gum	12	S62W	36
"	W. Oak	30	S12W	16 1/2	"	Hickory	10	S78E	69
F	W. Oak	14	S27E	26	L	B. Oak	25	S38W	65
"	Hickory	12	S46W	18	"	do	12	S10E	28
G	W. Oak	25	S40E	61	M	W. Oak	32	S78E	23
"	do	16	N10E	13	"	Hickory	15	N49W	29
H	W. Oak	16	N51E	62					
"	"	20	S20E	72					

B. Oak 6 N14E 24.  
Hickory 5 S35W 10.

14.17.18. March 4<sup>th</sup> 1835. Surveyed S18, T17, R14. 129  
in the following manner for the following persons

Hickory 12 S 69 W 5.

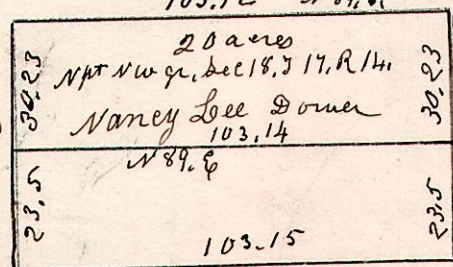


W. Oak 26 N81E 48.  
do 10 S78W 36.

W. Oak 12 S87W 15.

Gum 11 N50E 27.  
W. Oak 11 S67W 31.

Stone 12 the corner  
W. Oak 25 N63W 14.  
do 25 S40E 5.

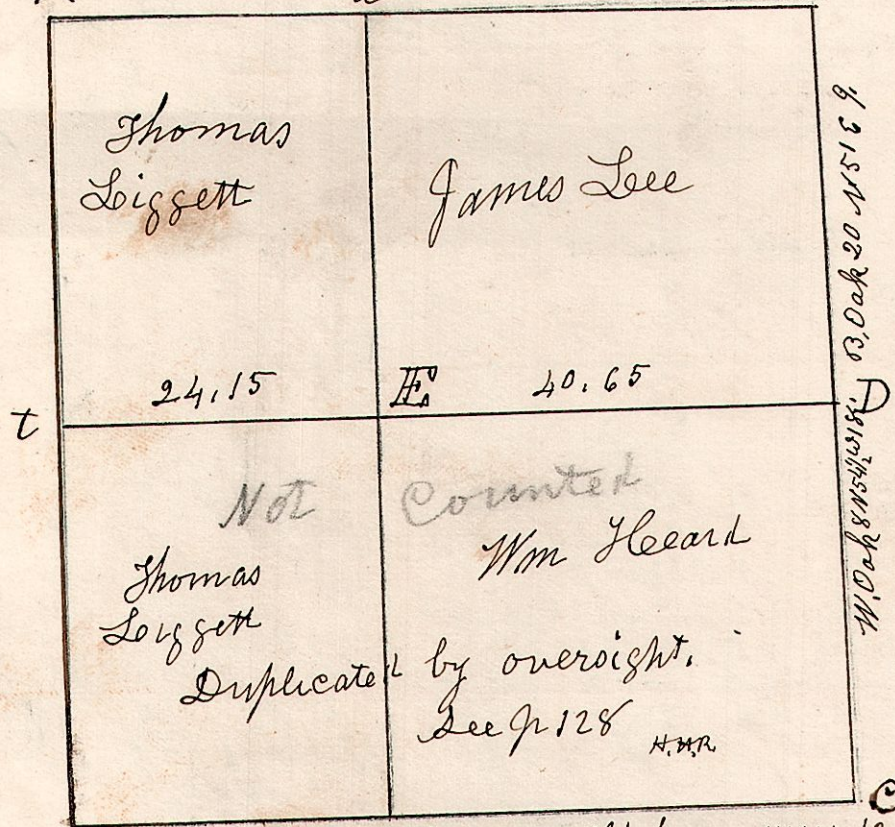


Sept 16<sup>th</sup> 1853

S. Robinson  
Gilson McClaran } Comm.  
Lawrence Mervel

14.17.6. November 2<sup>nd</sup> 1826.  
Surveyed Section 6 in T17, Range 6.

B. Oak 8 N20 1/2 W 133.  
Gum 14 S 32 W 216.  
W. Oak 15 S26E 40.  
B. Oak 5 N15W 50.  
B. Oak 7 N55E 27.  
do 6 N32E 65.



W. Oak 20 N51E 9.

W. Oak 18 S87E 47.  
do 16 S82E 60.

W. Oak 18 S58W 46.  
do 18 S25E 52.

W. Oak 30 N83W 28.  
do 30 East 62.

E	W. Oak	24		II	B. Oak	30	N21E	40
"	do	20		"	Stone	50	N14W	29
F	W. Oak	40		M	B. Oak	5	N72W	5
"	B. Oak	20		"	do	3	N10W	5
G	Leyner	18		O	Stone	15	the corner	
"	do	6		P	Ash	12	N39W	37
H	Stone	12	Corner	"	do	11	N59E	36
I	Stone	10	Corner					

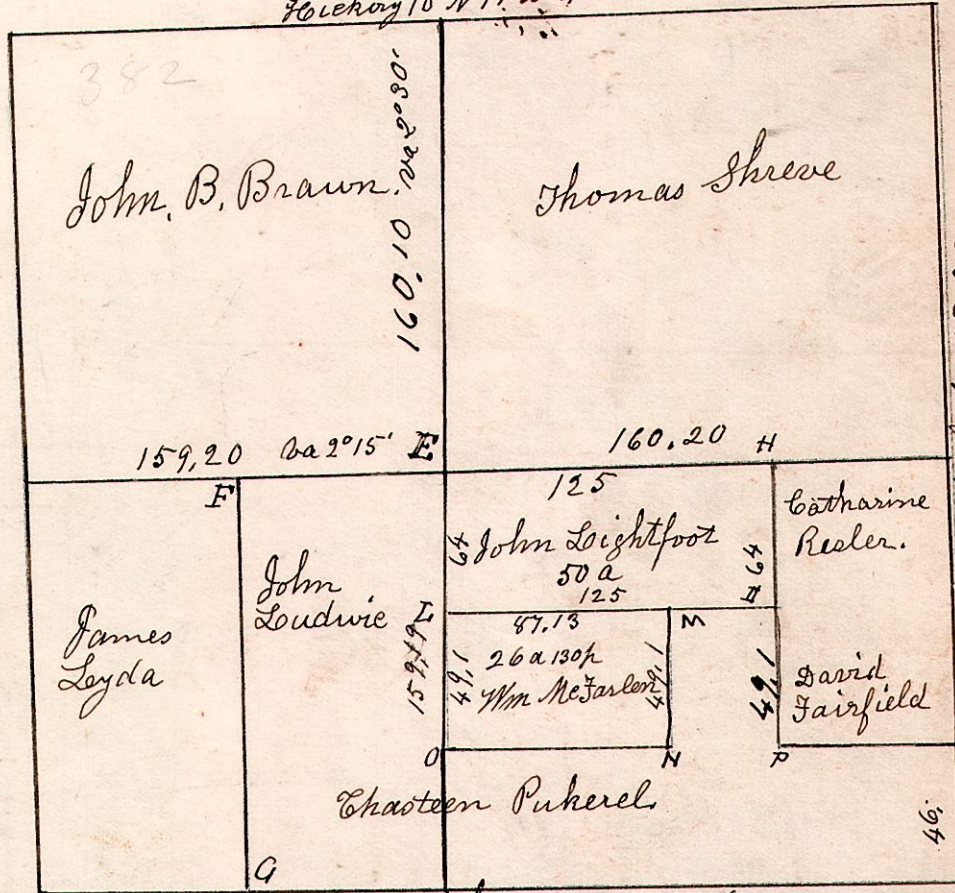
W. Oak 36 N73E 10.  
R. Oak 36 S13W 21.

B. Oak 24 N12E 11.  
W. Oak 14 S15E 36.

E. B. Oak 9 S44E 13 1/2.  
W. Oak 6 S72E 29 1/2.  
t S. W. Oak 10 N66W 6 1/2.  
do 18 N25 1/2 E 30.

14.18.28. Surveyed Section 28, T18, R14.  
in the following manner.

June 13<sup>th</sup> 1832.  
Elm 26 S62E 33.  
Hickory 10 N11W 48.



B. Oak 18 S26E 29.  
W. Oak 10 N27E 54.

Hickory 11 N41W 12.  
B. Oak 14 S70E 19.