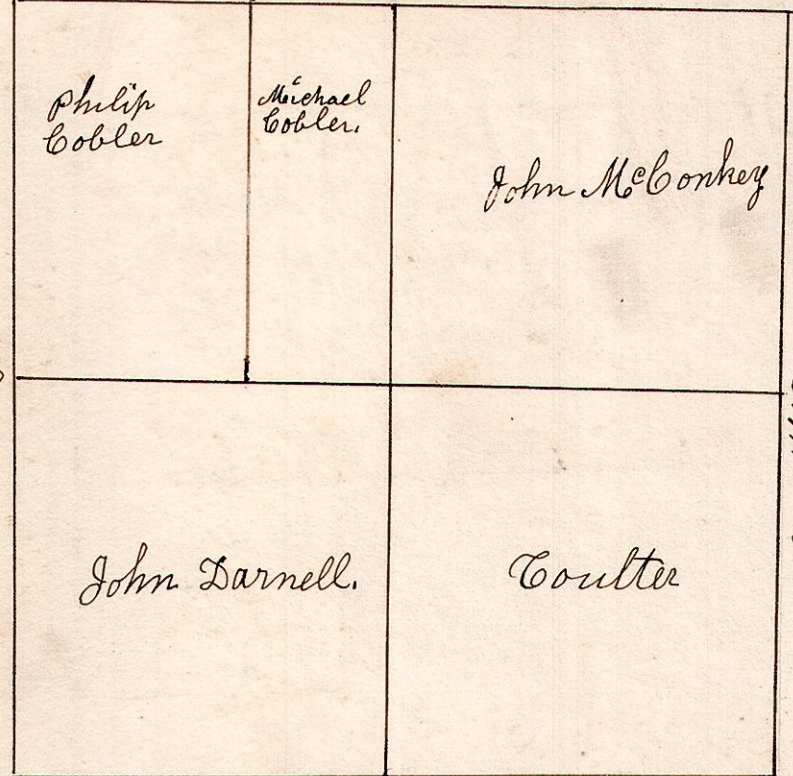


January 14<sup>th</sup> 1830. Surveyed Sec 5  
T 18. R 14. in the following  
manner and persons

W. Oak 34 E 19. W. Oak 14 N 13 1/2 W 9.  
do N 67 W 59. do 16 S 34 W 47.



W. Oak 12 N 27 E 55.  
B. Oak 18 S 26 E 29.

Cal. App. Co. N 43 E 14.  
W. Oak 18 S 82 W 87.

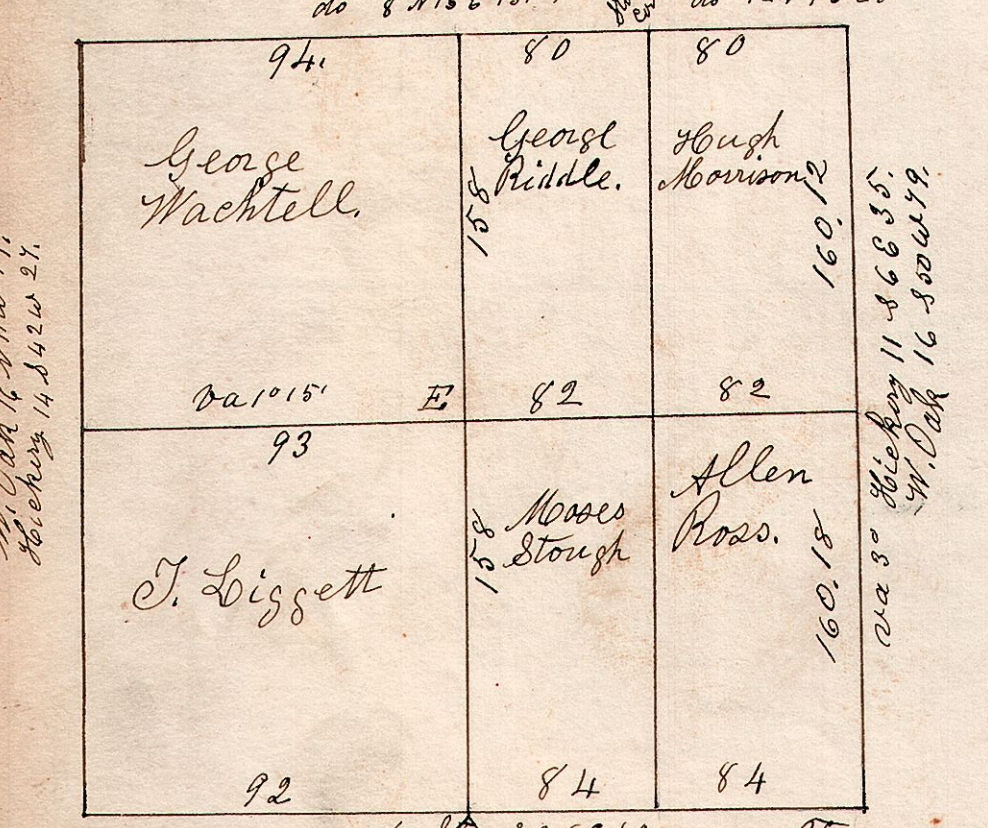
W. Oak 10 S 68 W 23.  
do 14 N 37 E 52.  
E. W. Oak 30 N 6 1/4 E 5. Taken May 30<sup>th</sup> 1876.  
B. Oak 8 N 75 W 13 1/2. by H. H. Robinson.

14. 18. 30. August 21<sup>st</sup> 1833. Surveyed Sec 30.  
T 18. R 14. in the following manner.  
none taken.



Stone the corner  
B. Oak 8 N 15 E 15.  
do 8 S 55 E 30.  
W. Oak 11 S 20 E 13.  
do 12 N 9 E 28.

14. 18. 31. August 23<sup>rd</sup> 1833. Surveyed Sec 30.  
T 18. R 14. as follows.

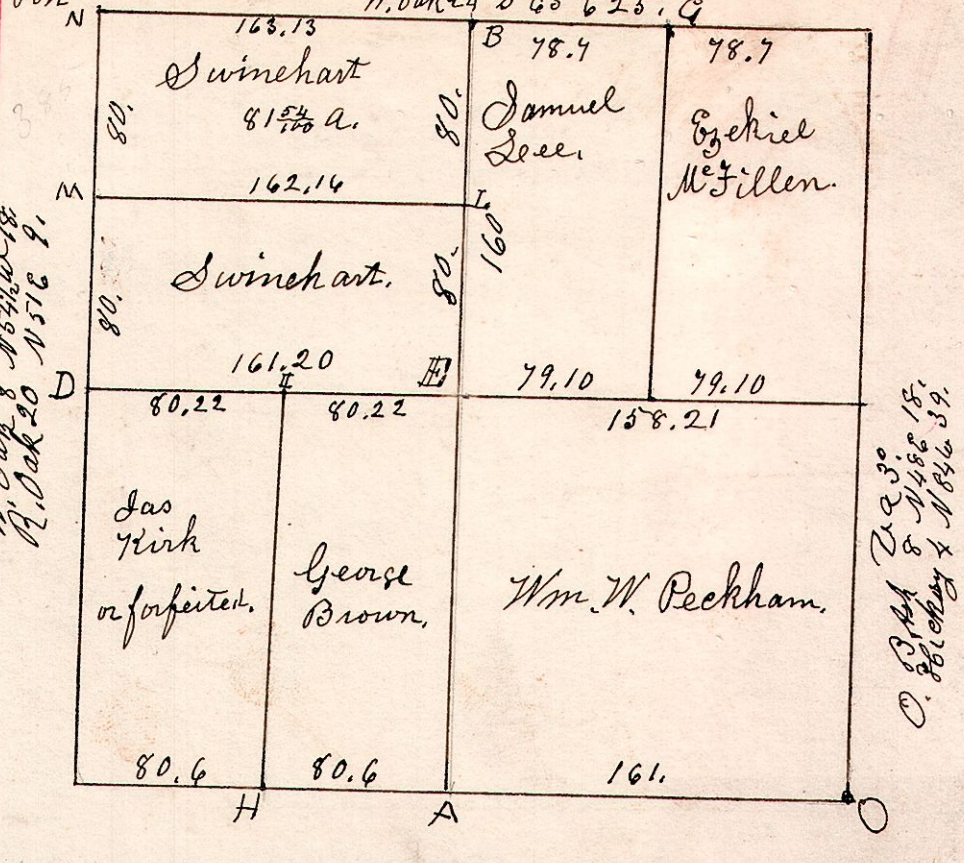


W. Oak 16 N 11 W 11.  
March 14 S 42 W 27.

W. Oak 11 S 66 E 35.  
W. Oak 16 S 50 W 49.

W. Oak 15 S 26 E 40.  
E. W. Oak 20 N 71 E 30.  
B. Oak 20 S 15 W 46.

14. 17. 5 January 22<sup>nd</sup> 1830. Surveyed Sec 5  
T 17. R 14. in the following manner.

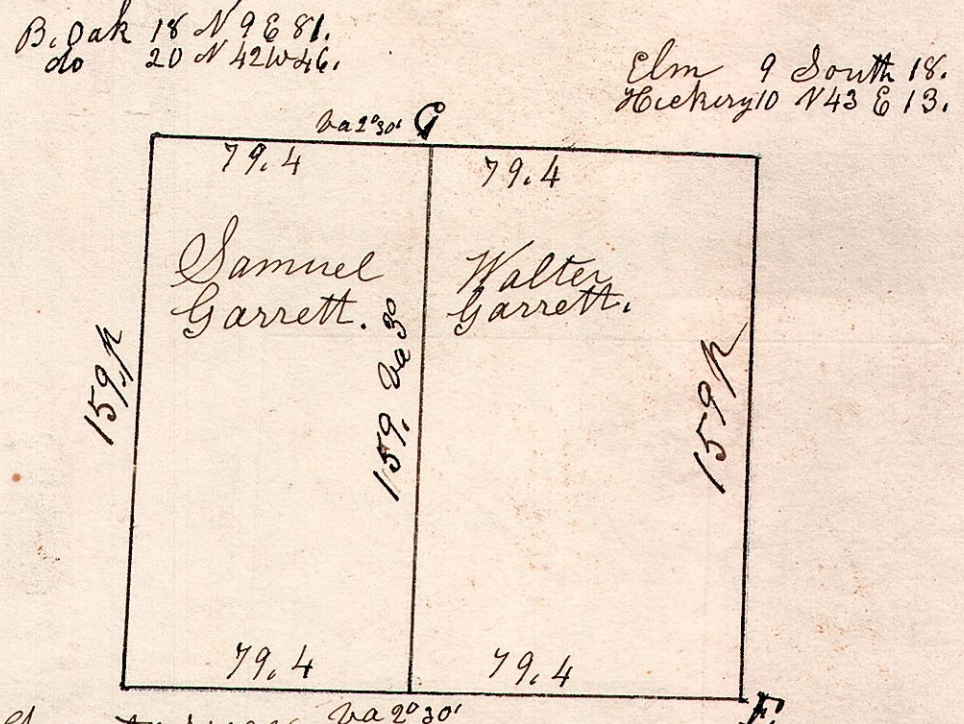


W. Oak 8 N 54 1/2 W 18.  
B. Oak 20 N 51 E 9.

O. B. Oak 20 S 30 E 18.  
B. Oak 18 S 45 E 18.

E B. Oak 6 S 3 E 4 1/2 H Gum 12 N 3 W 49  
" W. Oak 6 N 40 W 8 I Cherry 5 S 16 E 22  
F B. Oak 9 S 5 W 35 II B. Oak 3 S 3 E 6  
" Lynn 8 N 87 E 16 " do 4 S 65 W 9.  
G B. Oak 15 N 30 E 26 L. M. Posts.  
" W. Oak 12 S 9 E 26. Surveyed the line  
L. M. through NW 1/4 December 8<sup>th</sup> 1840.

14. 17. 17. Nov. November 22<sup>nd</sup> 1827. Surveyed  
the north west quarter of Sec 17.  
T 17. R 14. in the following manner  
and for persons named.

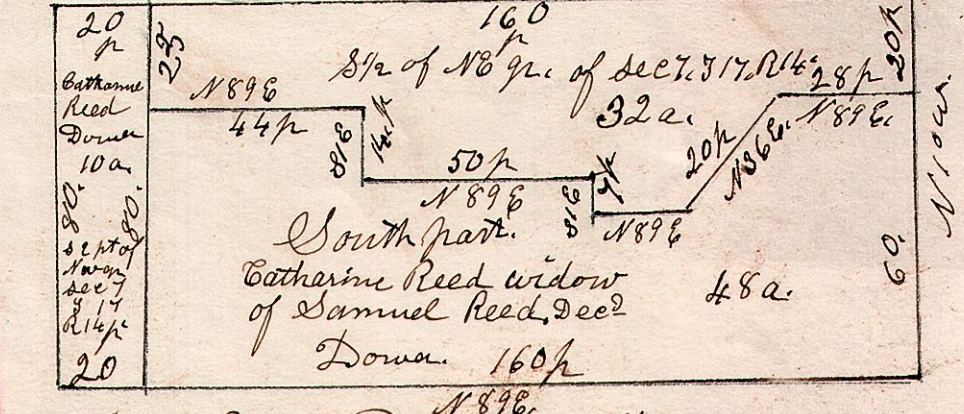


B. Oak 18 N 9 E 81.  
do 20 N 42 W 46.

Elm 9 South 18.  
B. Oak 10 N 43 E 13.

Chesnut 7 S 40 E 36. W. Oak 18 N 40 E 32.  
E B. Oak 9 N 15 E 25  
" Gum 12 S 89 E 24  
F W. Oak 18 N 42 W 87  
G Hickory 12 S 55 W 24  
" W. Oak 25 N 66 E 36

14. 17. 7. S. of N 6 1/2 of Sec 7. T 17. R 14.  
February 25<sup>th</sup> 1867. N 89 E.



John Rowland  
James Liggett  
Samuel Robinson  
Ch. carns  
James W. Reed  
James H. Rowland.