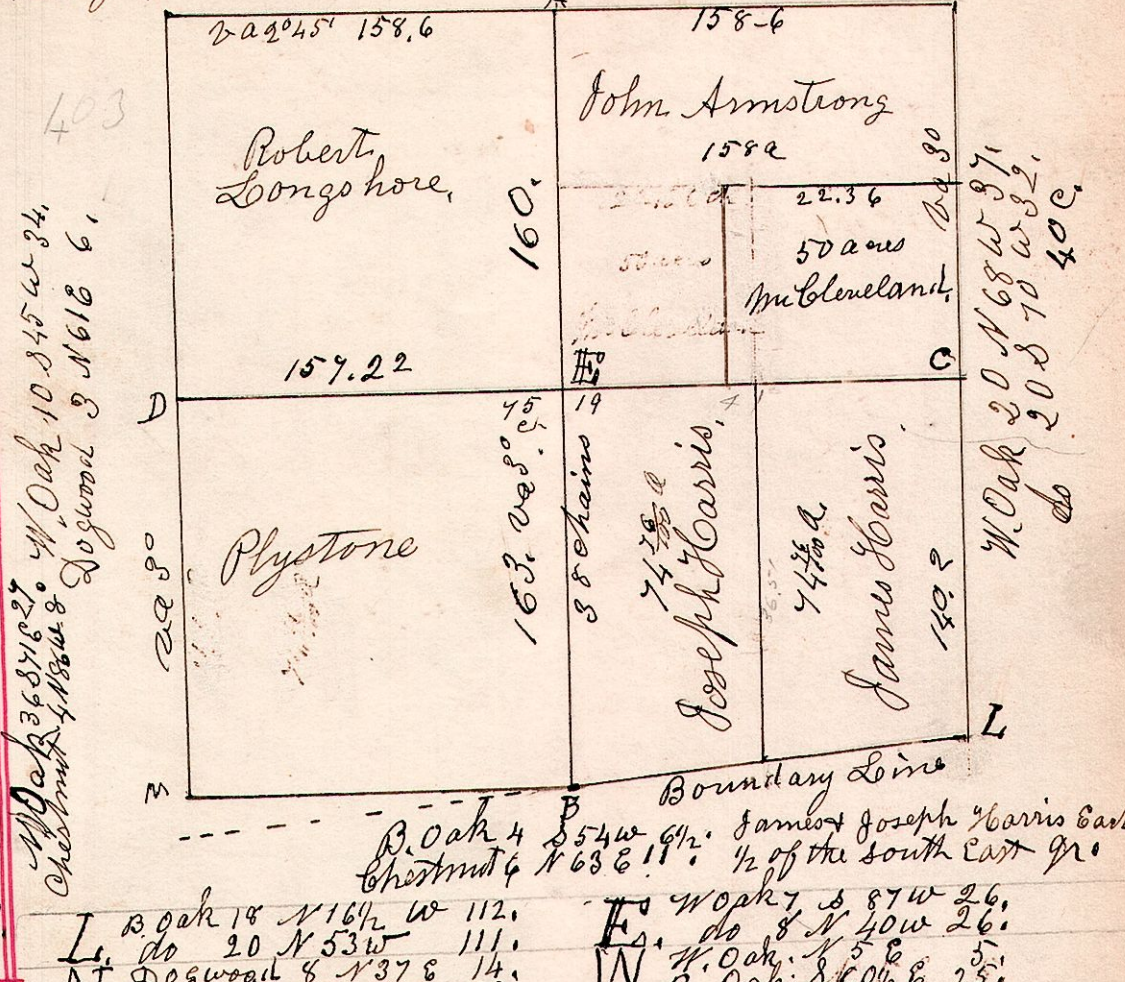
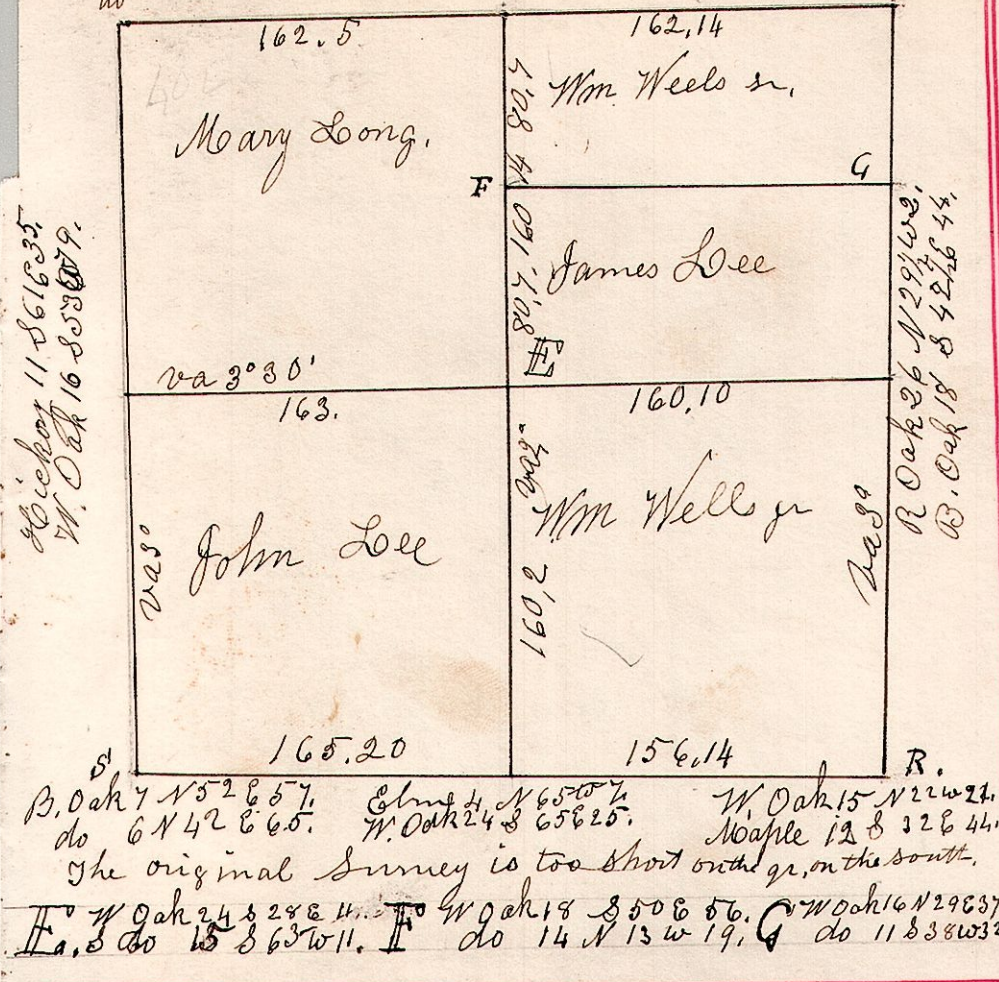


14.16.32. January 22nd 1828. Surveyed Sec 32, T18, R14. in the following names & persons, W. Oak 11 S 20 E 18. W. Oak 10 N 7 W 4 1/2. B. Oak 14 S 33 W 11. do 12 N 9 E 28. do 10 N 23 E 15. Hickory 12 N 76 E 7.

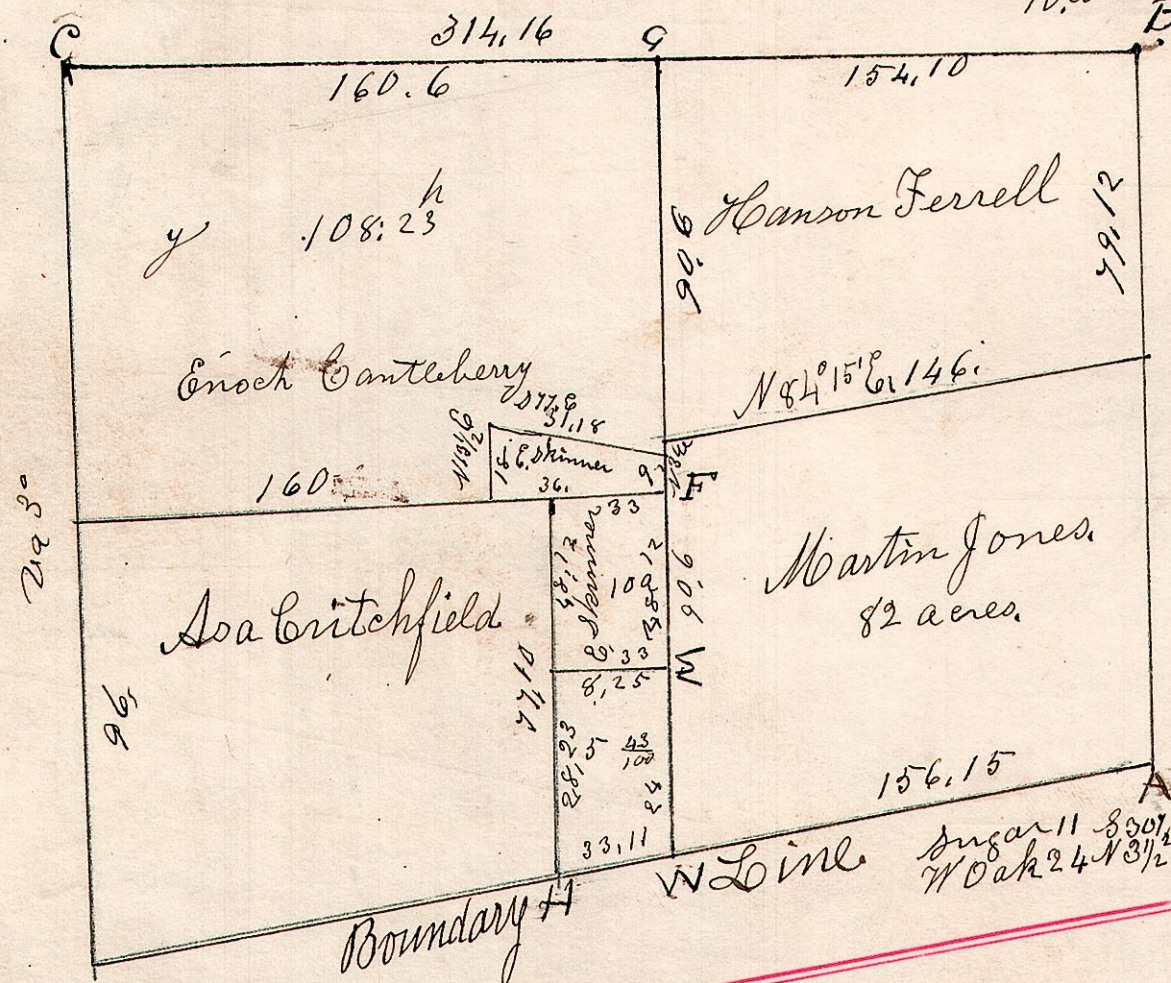
15.19.24. March 16th 1827. Surveyed Sec 24, T19, R15. as follows W. Oak 34 S 70 W 30. W. Oak 25 N 7 E 18 1/2. Hickory 12 S 76 W 33. do 6 S 76 E 25. do 8 N 71 W 18. do 9 South 7.



14.17.21.

April 19th 1827. Surveyed Sec 21, T17, R14. in the following names for the following persons,

W. Oak 47 S 47 E 11. W. Oak 40 N 54 W 6. W. Oak 10 corner B. do 45 1/2 N 45 1/2 W 22. do 40 S 30 E 62.

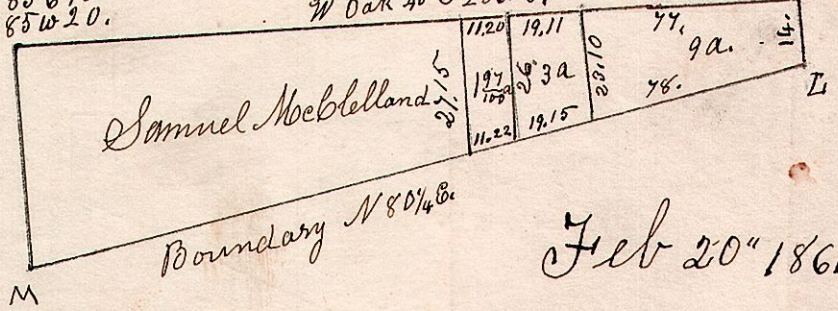


E	Poplar	5	Corner
F	Edom	12	N 60 W 27 1/2
G	do	12	N 70 W 27
H	W. Oak	30	N 13 W 40 1/2
I	do	28	S 34 W 62 1/2
J	Hickory	12	N 61 E 28
K	do	8	N 71 W 27
L	W. Oak	18	N 15 E 16
M	Cherry	5	S 7 W 79
N	W. Oak	15	N 12 W 27
O	W. Oak	36	S 31 E 22
P	Gum	12	N 55 W 25

14.17.24.

Section 24, Township 17 Range 14.

W. Oak 28 S 85 E 10. W. Oak 18 S 20 E 4. W. Oak 36 N 85 W 20. W. Oak 40 S 20 W 5.



Feb 20th 1861.

L. Ironwood 10 N 83 W 12. Ash 4 N 55 E 27. M. W. Oak 10 S 59 E 38. R. Oak 10 N 15 1/2 W 15.