

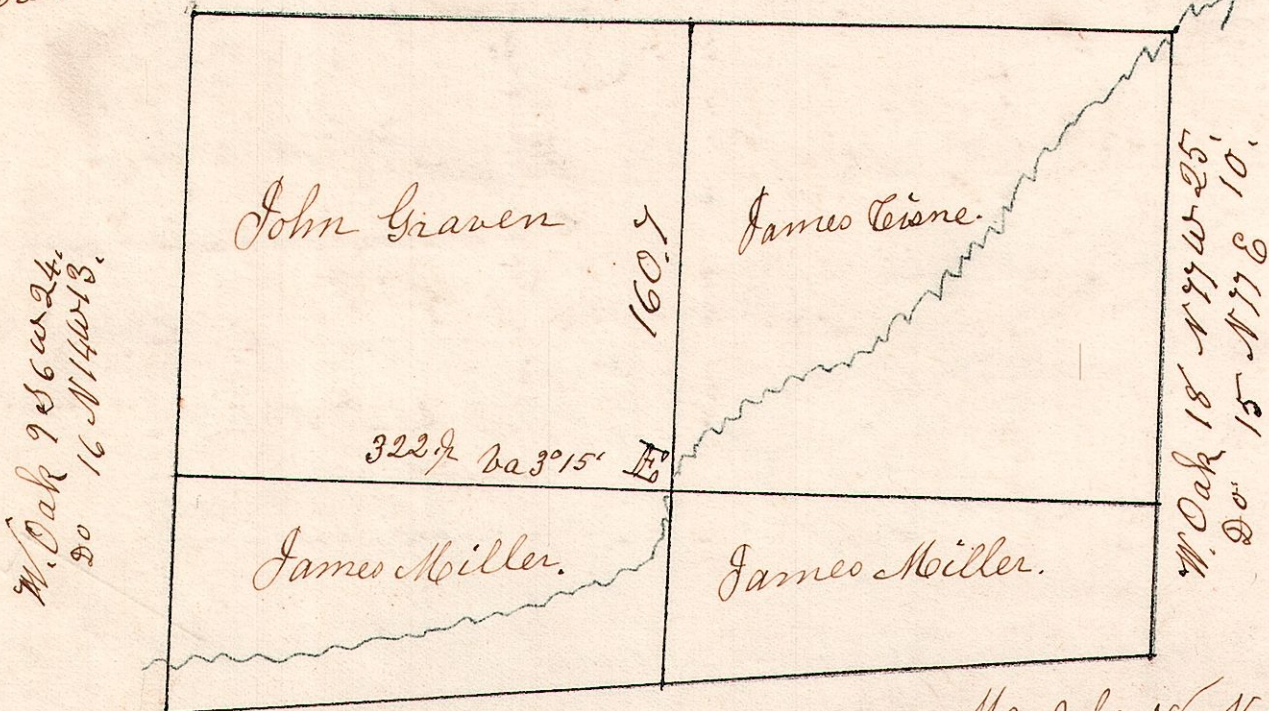
13.13.17.

April 4<sup>th</sup> 1827, Surveyed Section No 17, in Tp No 13. of Range No 13. in the following manner, and persons.

W. Oak 24 N 18 W 37.  
Ironwood 5 S 56 E 33.

Maple 15 N 39 E 39.  
Hickory 10 S 34 W 12.

Post in creek.



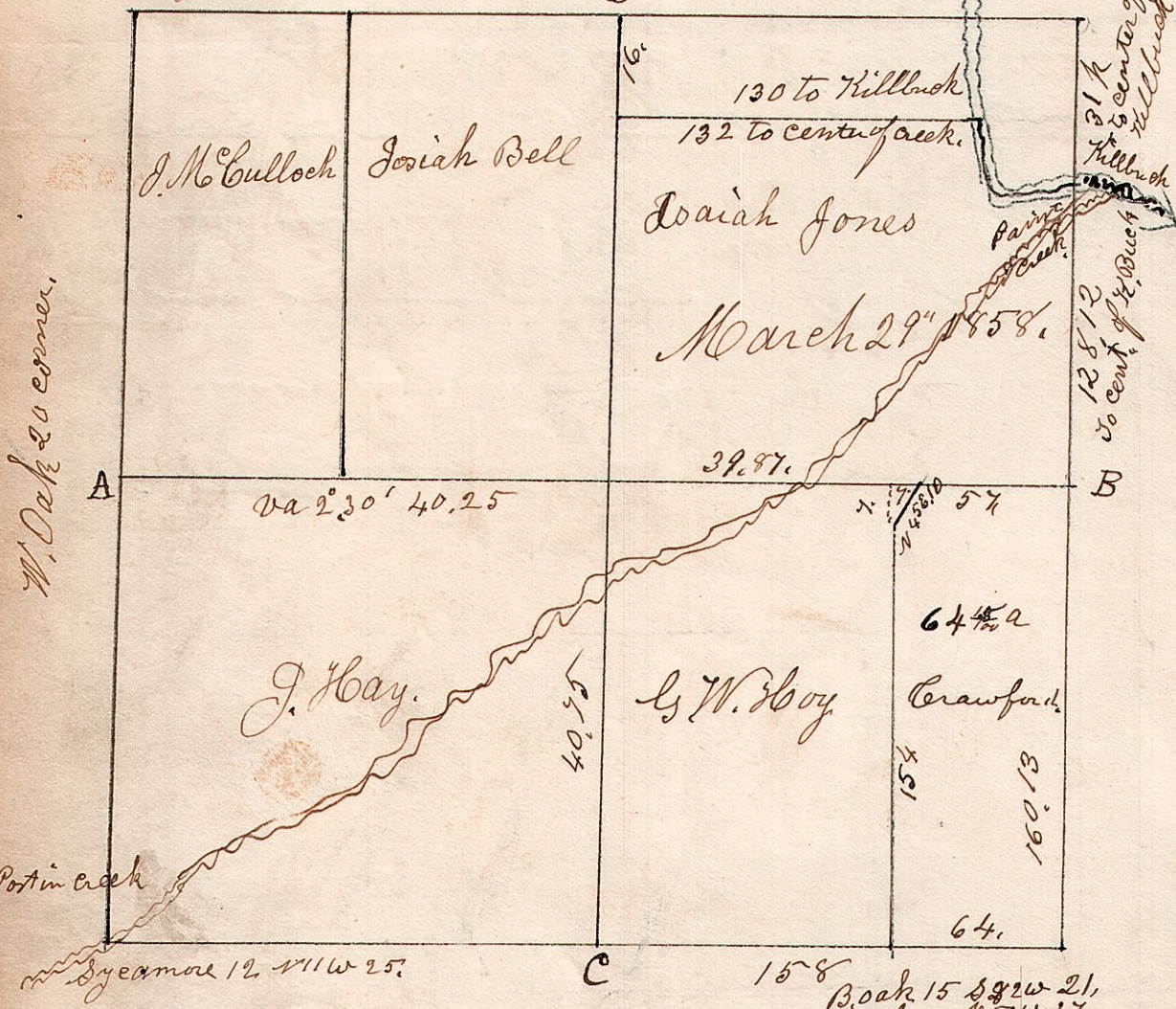
W. Oak 16 N 31 E 17.  
Sugar 18 S 42 W 13.

Maple 18 N 61 or 30 W 24.  
Do 18 S 28 W 19.  
E. W. Walnut 8 S 34 W 68.  
" B. Eye N 40 E 39.

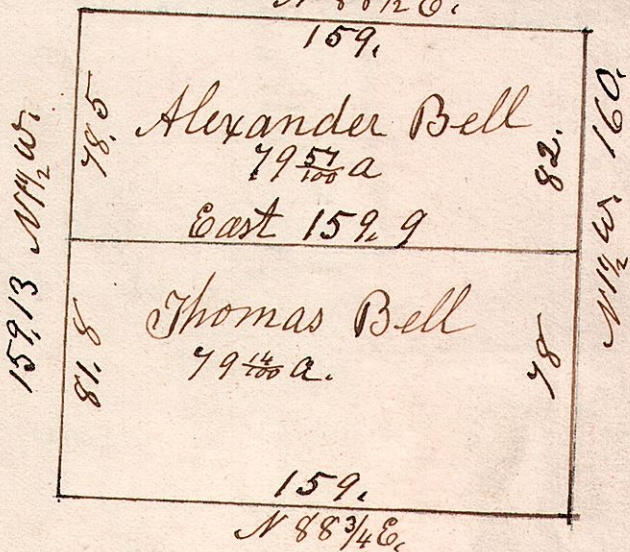
13.13.9. See 9. S. 13. R 13.

Feb 25<sup>th</sup> 1826.  
W. Oak 36 N 84 W 18.  
Hickory 10 N 60 E 7.

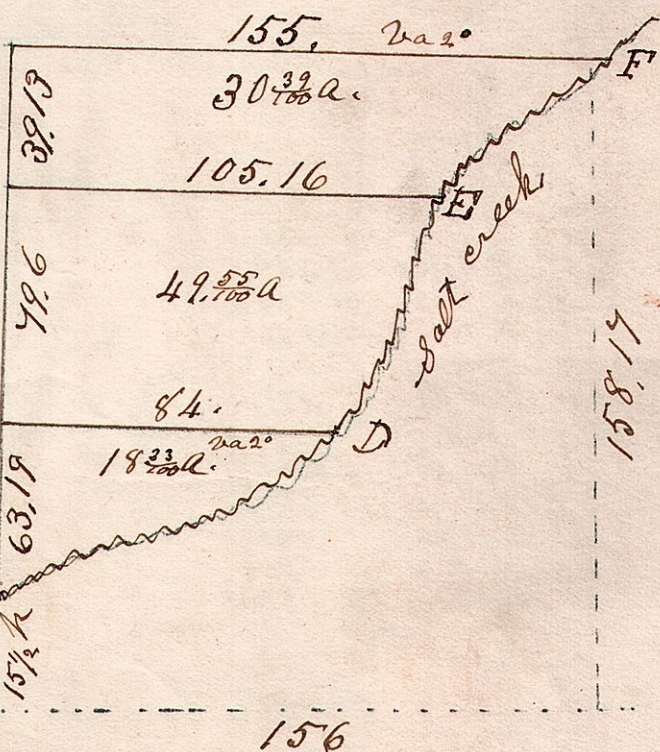
Sugar 20 S 12 W 50.  
Elm 18 N 26 W 44.



13.13.2. June 15<sup>th</sup> 1848.  
S.W. q. of Sec 2. S 13 of R 13.  
N 88 1/2 E.



13.14.36.  
S.W. q. Sec 36. S 14. R 13.

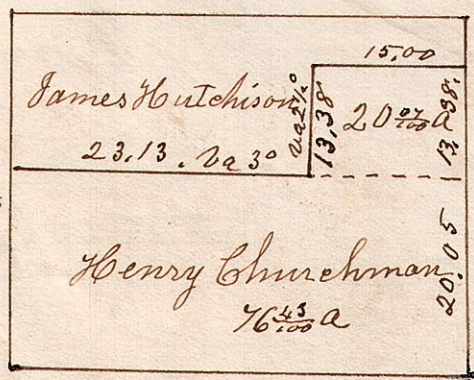


C. W. Elm 16. N 53 W 20

13.14.25. N.W. q. of S 25. T 14. R 13.

January 2<sup>nd</sup> 1834.

the 3/2 76.43  
S.E. pt N 1/2 20.07  
96.50 a Churchman.



From E. to F. Pass at E N 30 E 14. N 43 E 23.  
N 50 E 19. N 79 E 10. to center  
N 61 E 18. N 52 E 33. N 43 E 23  
N 50 E 25. N 47 E 14 to D N 47 E 14  
N 47 E 14. N 27 E 11. C N 16 E 20.  
N 25 W 9. N 18 E 20 a 2 1/2 N 22 W 13. N 158 1/2 W to A line.