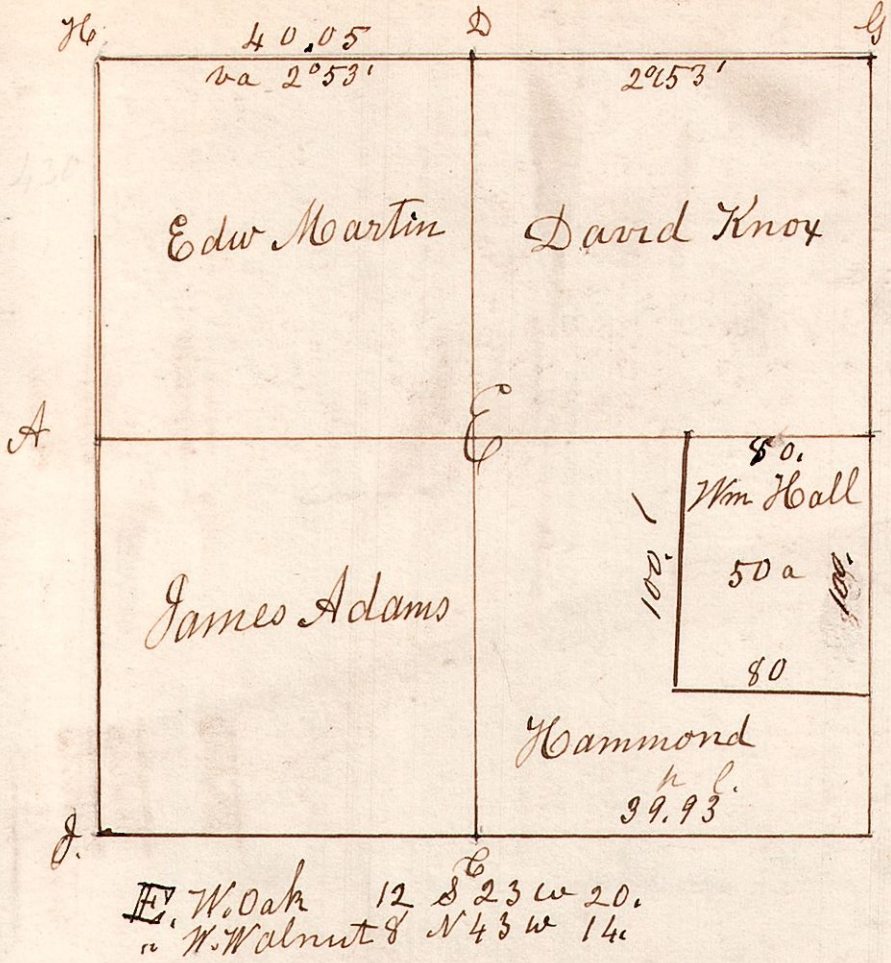
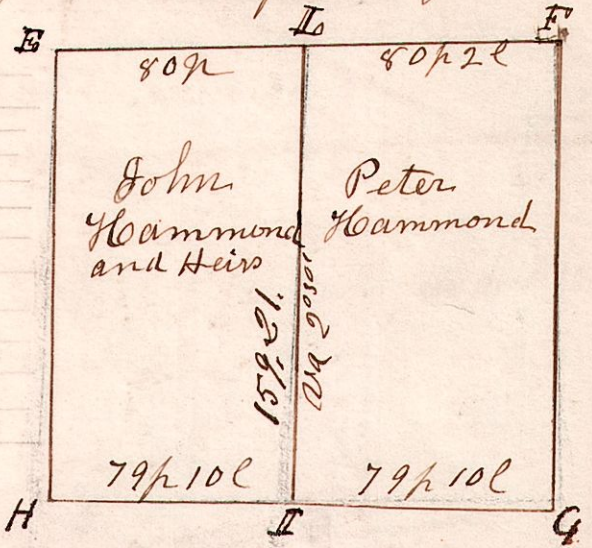


13.13.11. January 6<sup>th</sup> 1826. Surveyed Section No 11. S13 R13.



13.13.11. March 11<sup>th</sup> 1831. Surveyed Sec 11, S13. R13, South East quarter. In the following manner + following persons.

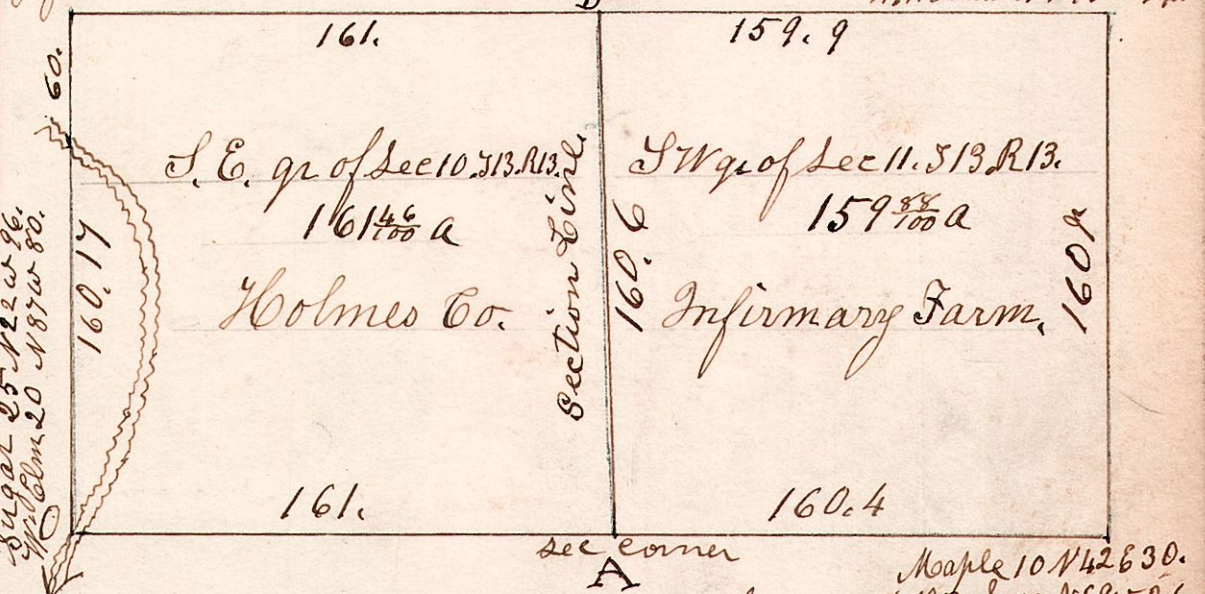
E	W. Oak	12	S 23 W	20
F	W. Walnut	8	N 43 W	14
F	Dogwood	6	S 60 W	8
H	Do	9	N 60 E	20
H	W. Oak	14	N 69 W	26
H	Maple	10	N 42 E	30
G	Chestnut	15	N 75 W	30
I	W. Oak	12	S 57 E	17
I	Maple	18	S 42 W	9
"	Gum	12	N 38 E	19
L	B. Oak	25	N 34 E	19
"	Sugar	16	N 36 W	36



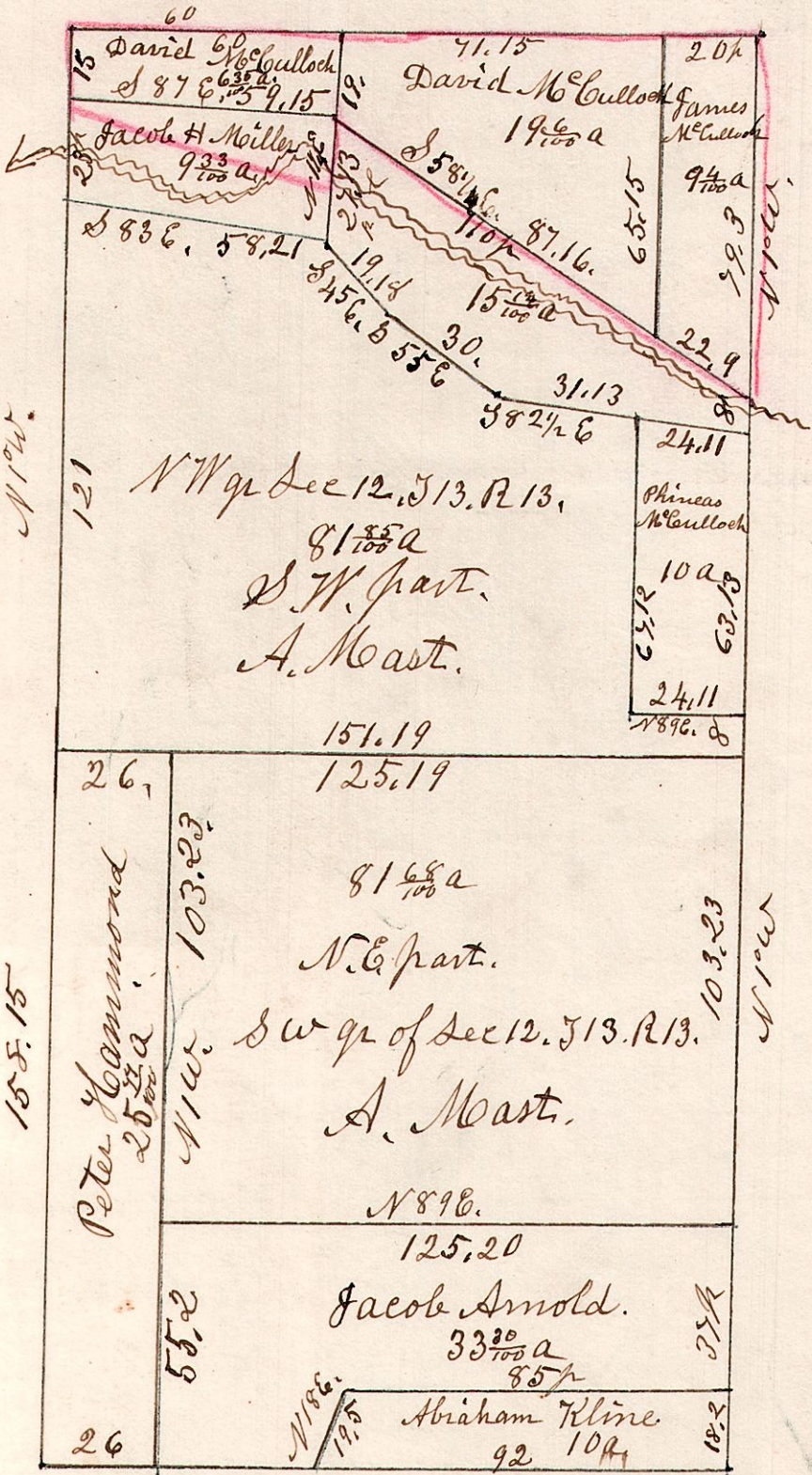
13.13.10 Sep. 11 Sw q.

15.6.14.

January 9<sup>th</sup> 1866. Sycamore 30. Corner. W. Oak 12 S 23 W 20. W. Walnut 8 N 43 W 14.

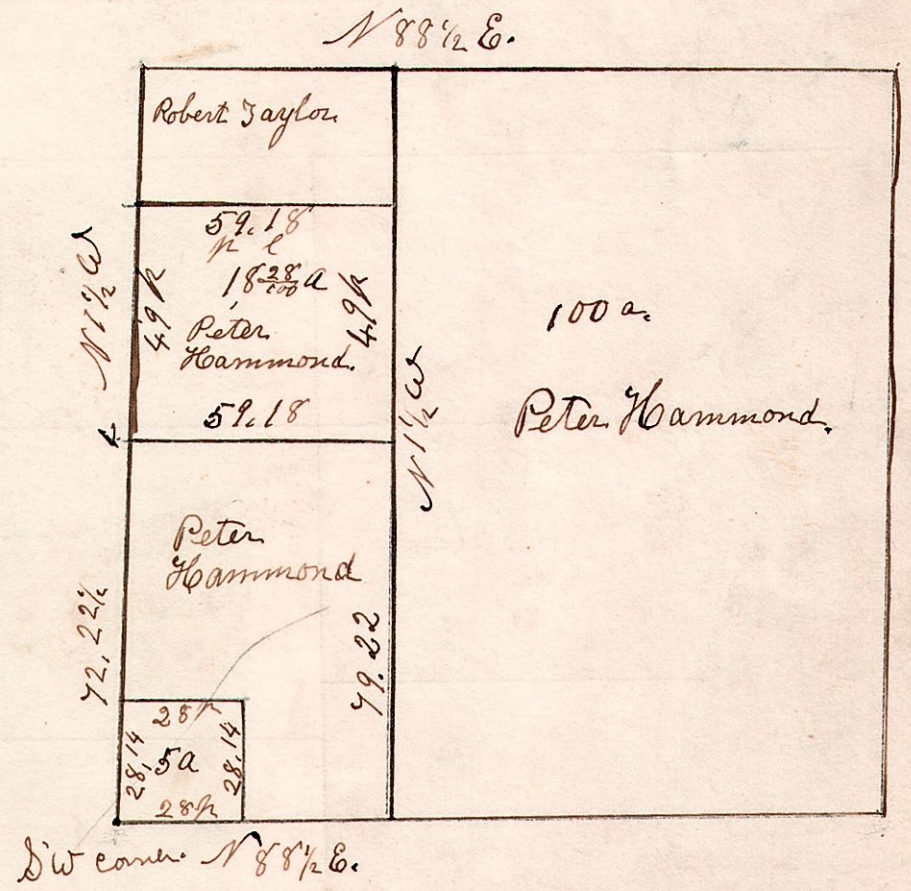


13.13.12 Sw. q.



March 10<sup>th</sup> 1881. Surveyed the west line, and about 5 p. N of. O. took Buckeye, 6 in diam, west 1 foot of w line, with witness notch. H. C. Robinson Surveyor

13.13.11 Sw q. March 31<sup>st</sup> 1856. Sec q. Sec 11. S13. R13.



5 acre piece, Luemo Remington.