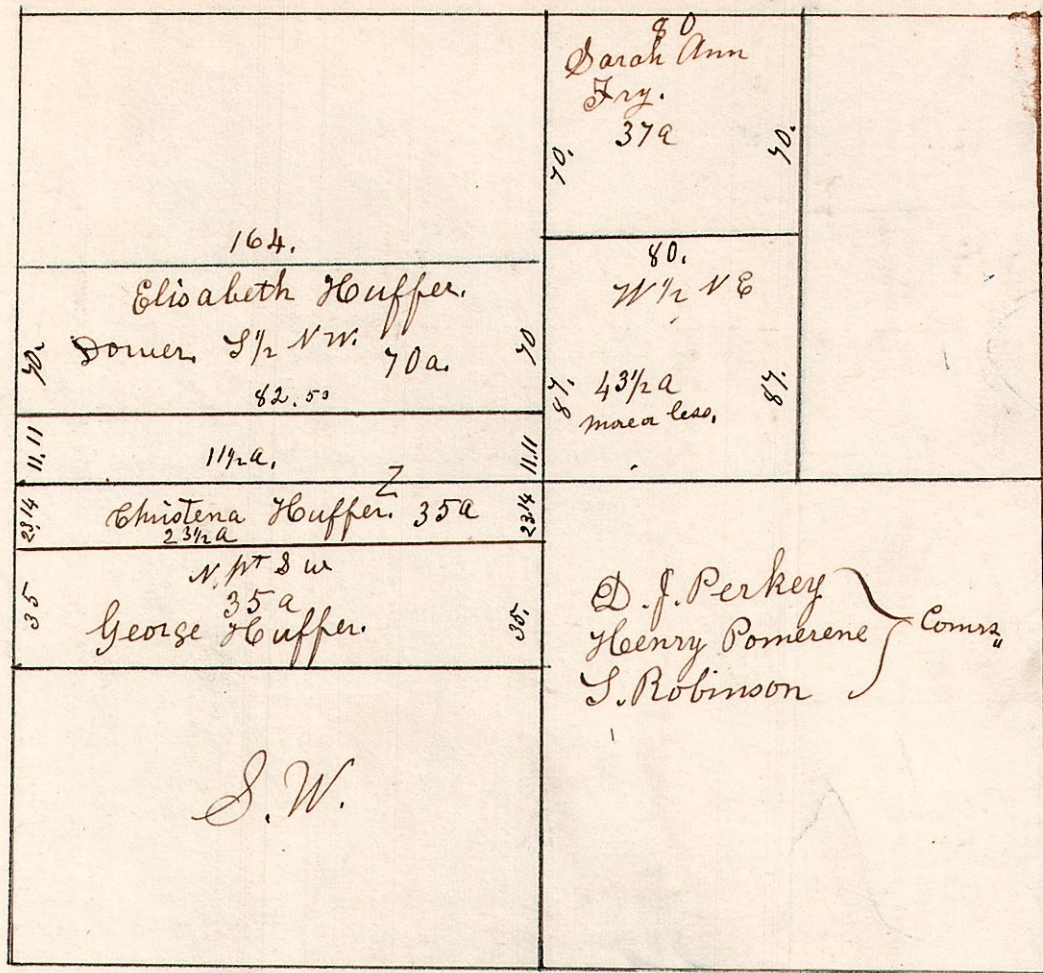
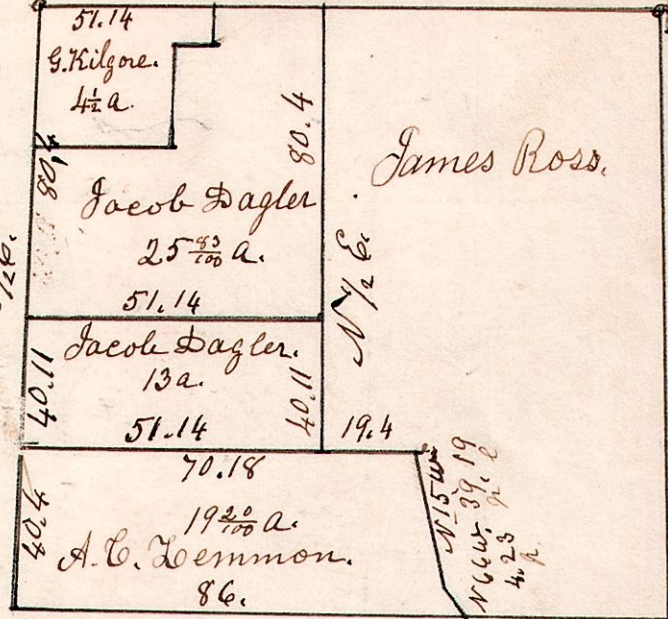


12.14.4. Section 4, Township 14 Range 12,
October 22nd 1860.



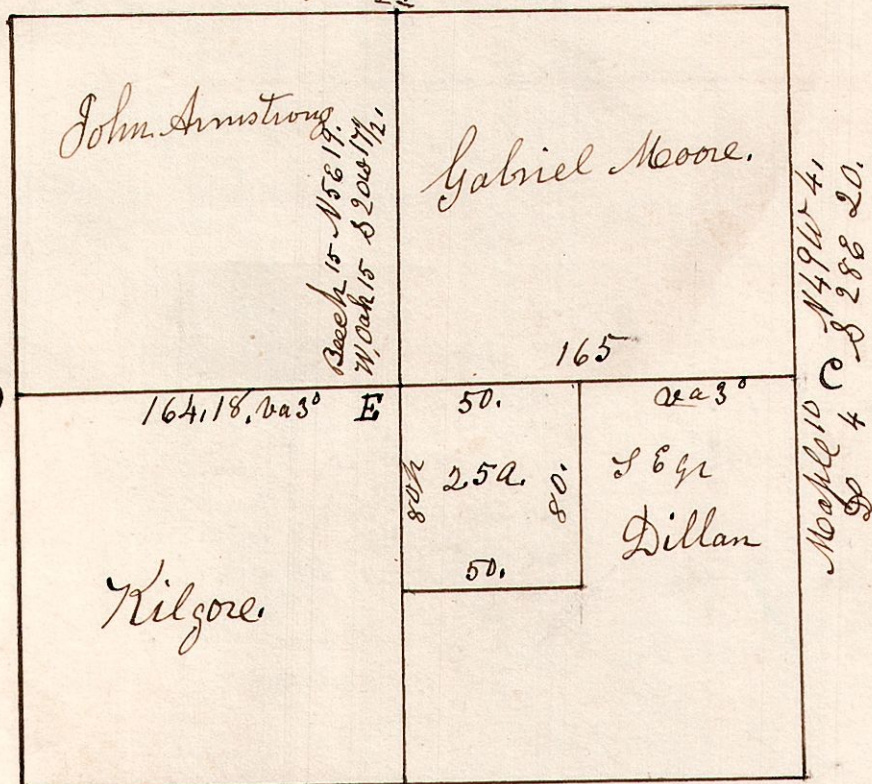
12.14.5 S.E. of Sec 5, T. 14, R. 12.



Surveyed Oct. 20th 1871.

12.14.5 April 25th 1827. Sec 5, T. 14, R. 12.

W. Oak 24. S 12 W 32. Hickory 9. N 36 E 14. Beech 20 S 55 W 15.

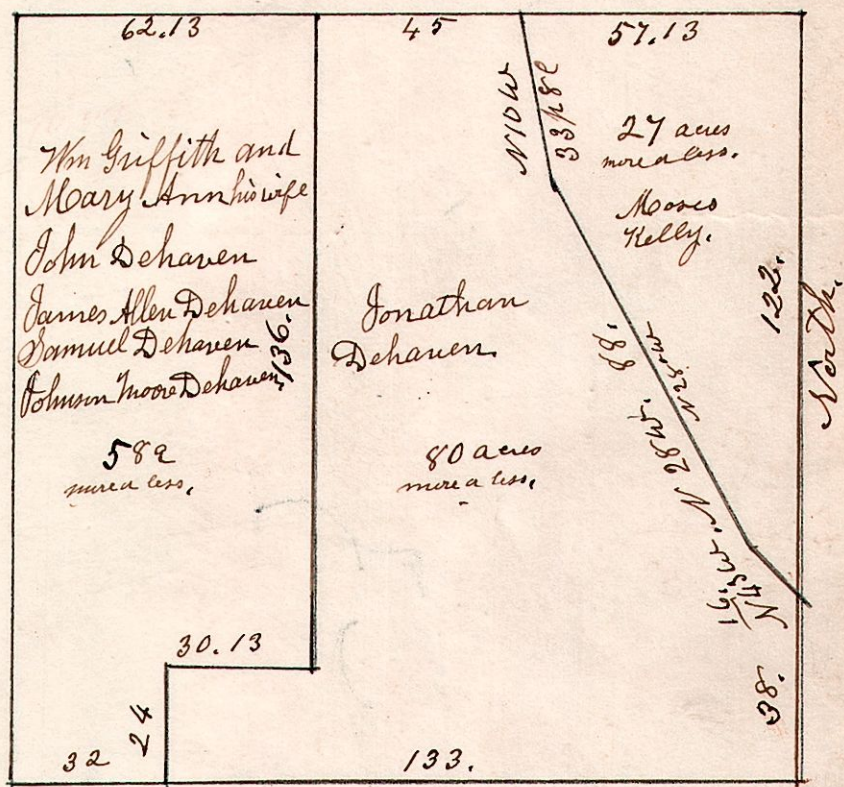


Beech 12 West 19, Poplar 10 S 51 W 21.

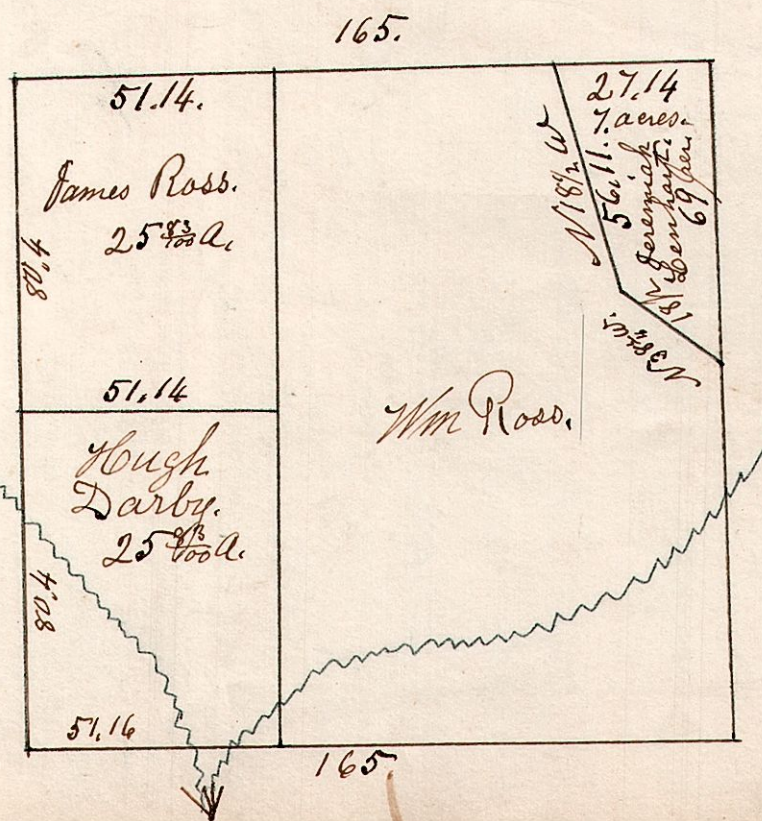
Dogwood 5 S 63 W 6, R. Oak 8 N 53 E 18, Hickory 12 S 65 W 21, Maple 14 N 44 E 21.

12.14.5 N.E. of Sec 5, T. 14, R. 12.

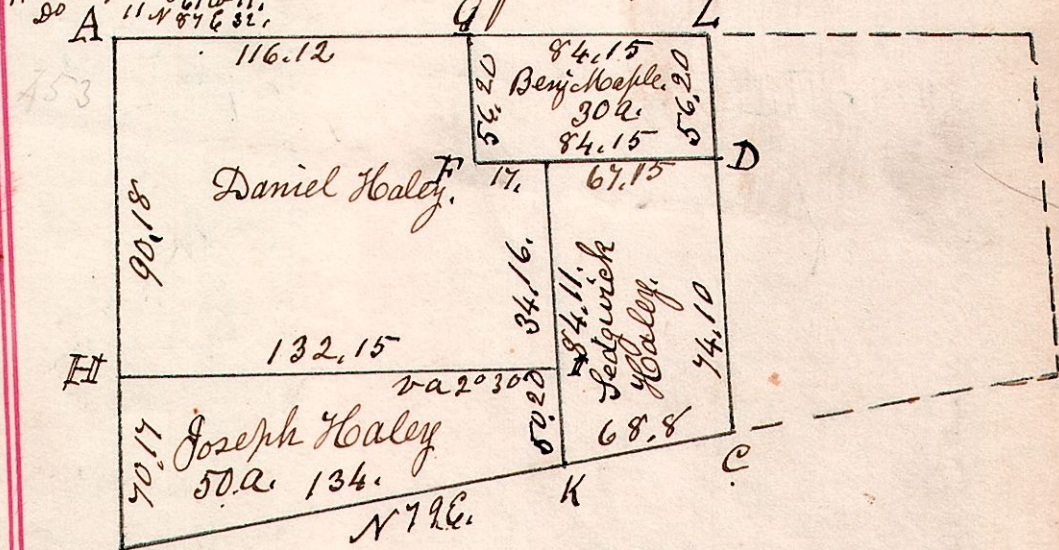
By order of Court. January 31st 1831 Surveyed the following tracts of land (town) The Dehaven tract, & the Griffith & others, tract Situate on the N.E. of Sec 5, in T. 14, of R. 12. (Gabriel Moore gr. recd)



12.14.5 S.E. of S 5, in T. 14, of R. 12. Surveyed March 18th 1837.



12.14.11 April 12th 1829. Surveyed Section 11 in Township 14 of Range 12.



Maple 18 N 42 W 11. W. Oak 18 S 76 E 2. E. W. Oak 15 S 15 W 34. B. Oak 20 N 68 E 24. K. W. Oak 18 S 49 E 16. C. W. Oak 61 N 5 E 61. D. W. Oak 46 N 25 W 46. " Do 19 N 76 E 14. " Do 17 S 8 E 17. H. B. Oak 30 N 11 E 13. " Ash 5 S 12 E 1. " Elm 6 S west 16. " Walnut 6 S 16 W 37. Q. W. Oak 16 S 51 W 16. " Sassafras 6 N 31 E 13. " Elm 5 S 70 W 12.