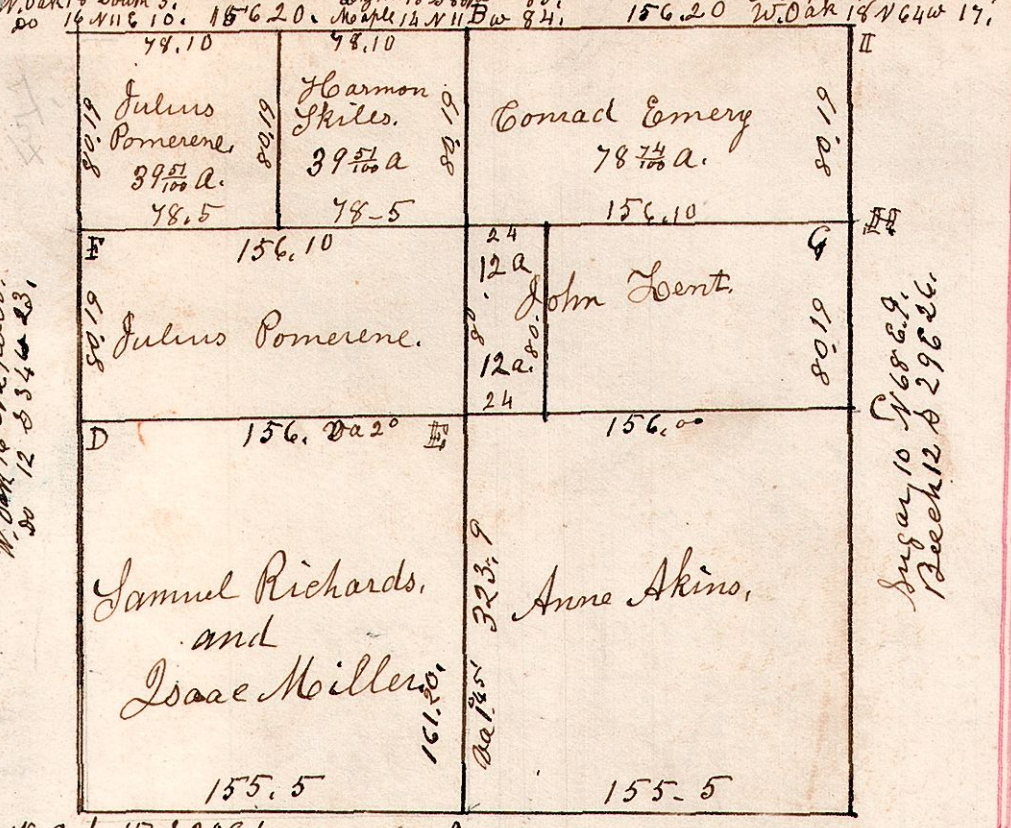


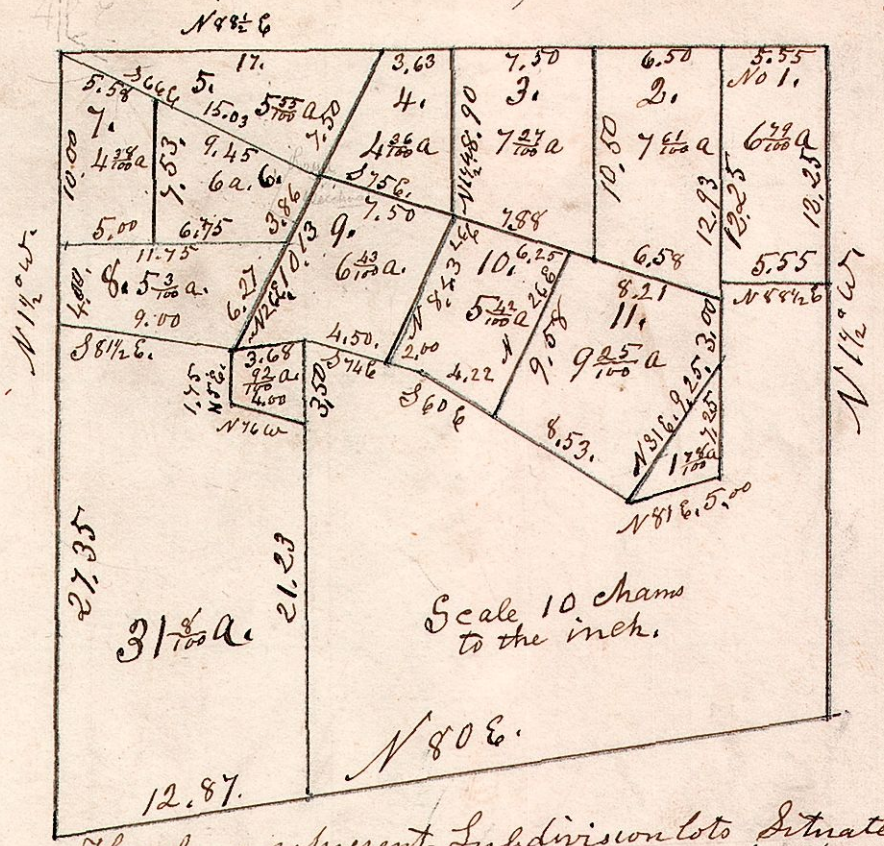
12.15.27. March 24th 1831. Surveyed Sec No 27.
in Sp 15. R 12. as follows.



W. Oak 15 S 20 E 4, Gum 11 N 41 W 22, R. Oak 12 N 60 W 43, Beech 10 S 30 W 20, Elm 40 S 16 E 34, Maple 14 S 76 E 7.

E. W. Oak 20. N 26 W 24, W. Oak 14. S 36 W 7,
F. Cherry 12. N 42 W 38, W. Oak 8. South 33.
G. Stone 12, the corner, H. Stone 8, the corner.
June 23rd 1841
Divided the 1/2 of the NW q. above
between Harmon Skiles & Julius Pomerene.
Nov 2nd 1844.
Surveyed the above 12 acres for John
Lent. Wpt of 1/2 of NE q. of sec.
Nov 25th 1844
Surveyed the balance of the J. Lents
1/2 q. section, wa 3/4 generally

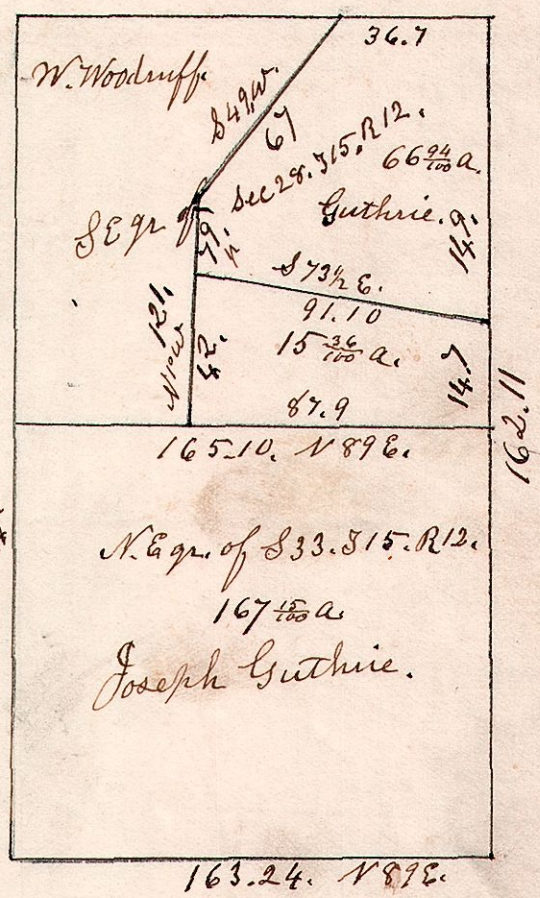
12.14.7. Abraham Mast.
Sub-Division Lots.



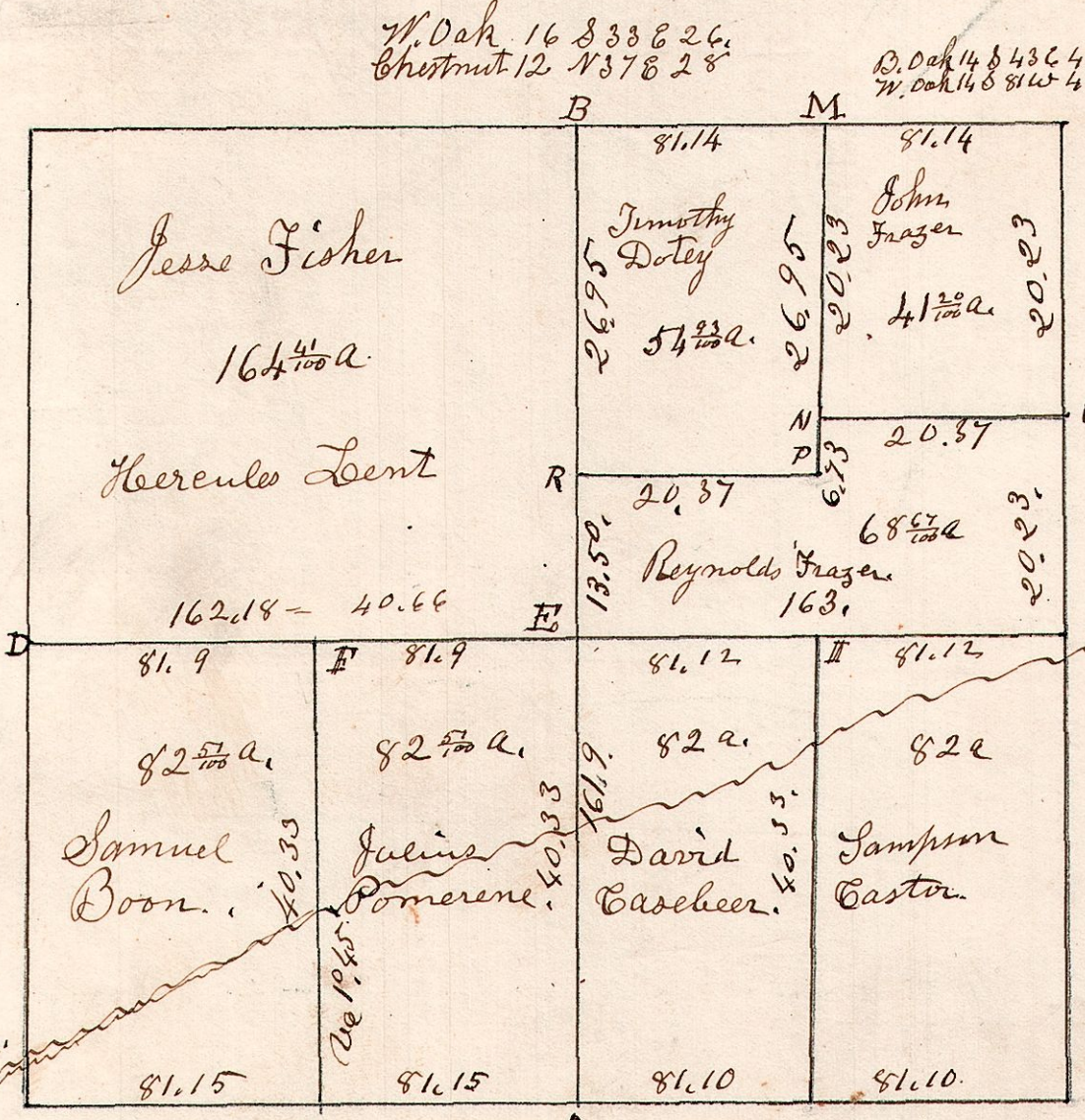
The above represent Subdivision lots situated on
the south east quarter of section 7. in Sp 14. of R 12.
J. Robinson.

12.15.28. Surveyed June 25th 1861.

S.E. q. Sec 28. T 15. R 12.
N.E. q. Sec 33. T 15. R 12.



12.15.26 December 18th 1829. Surveyed Section 26
in Sp 15. of R 12. as follows.



W. Oak 14 N 45 W 20.
do 20 N 84 E 64.

- E. Beech 15 N 89 W 23, E. B Oak 24 S 67 E 9
- F. W. Oak 18 N 64 E 18, F. Hickory 8 N 64 W 27
- G. Beech 30 N 89 W 46, G. do 12 S 22 E 36
- H. W. Oak 12 S 44 E 28, H. Poplar 15 S 74 W 43
- I. Hickory 18 N 41 W 13, I. Gum 8 S 32 W 5
- M. Gum 12 N 1 E 7, M. W. Oak 12 S 23 W 28
- N. Stone 15 the corner
- O. Chestnut 12 S 77 W 18, O. Chestnut 6 N 42 E 13
- P. Stone 16 the corner
- R. W. Oak 24 East 20, R. Poplar 6 N 57 W 9