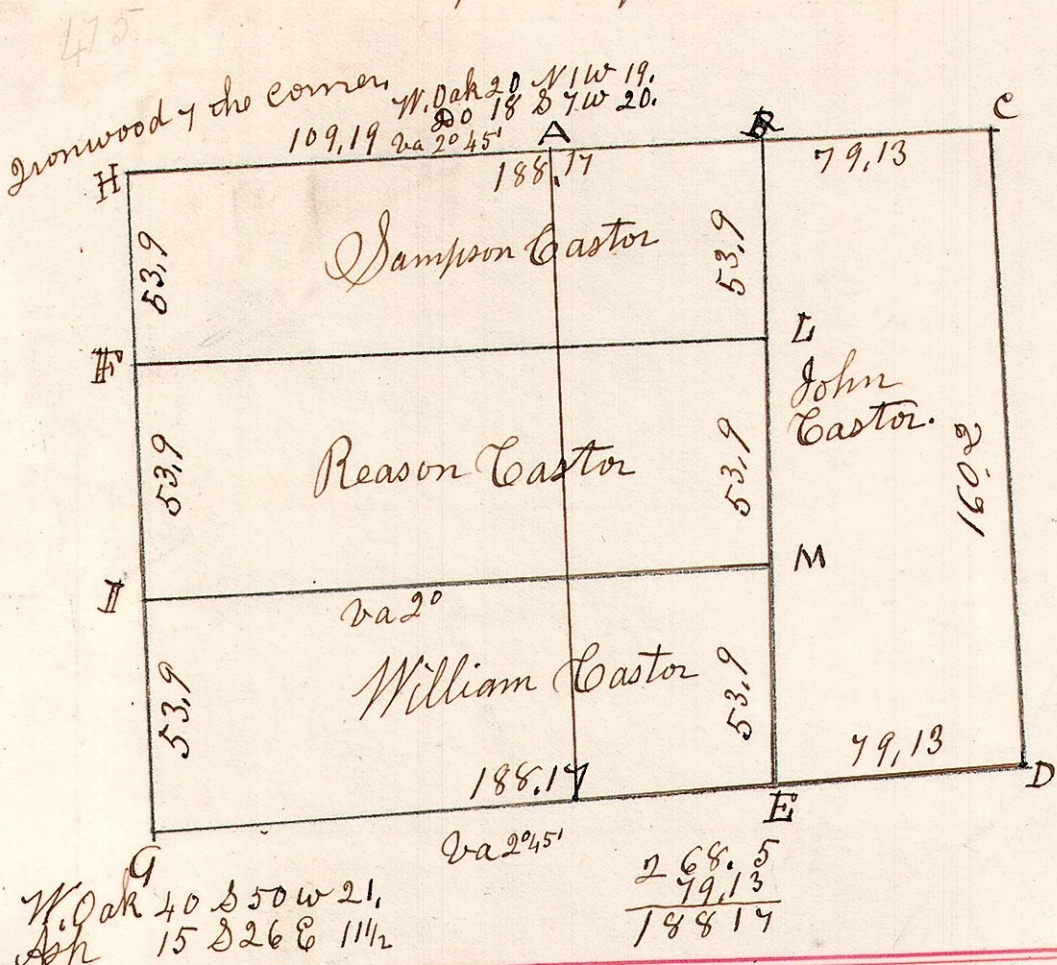
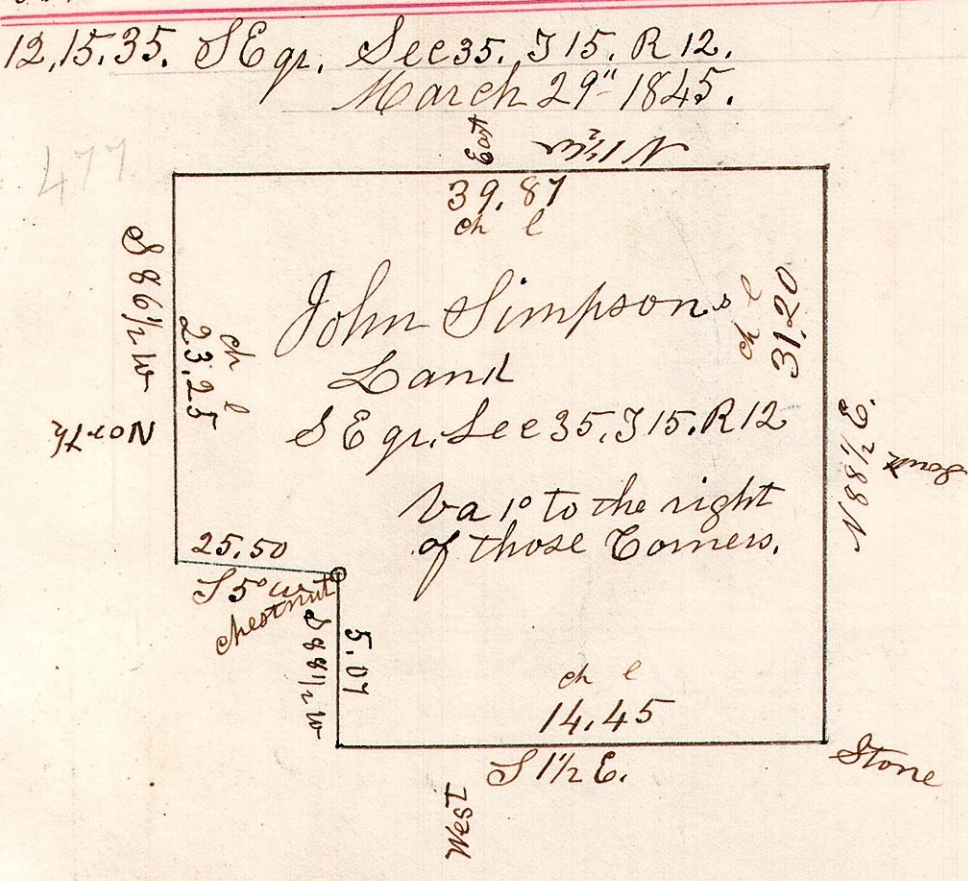


12.15.31, February 6 1829. Surveyed the NW fraction of Sec 31. in T 15 of R 12. in the following manner and for the following persons.

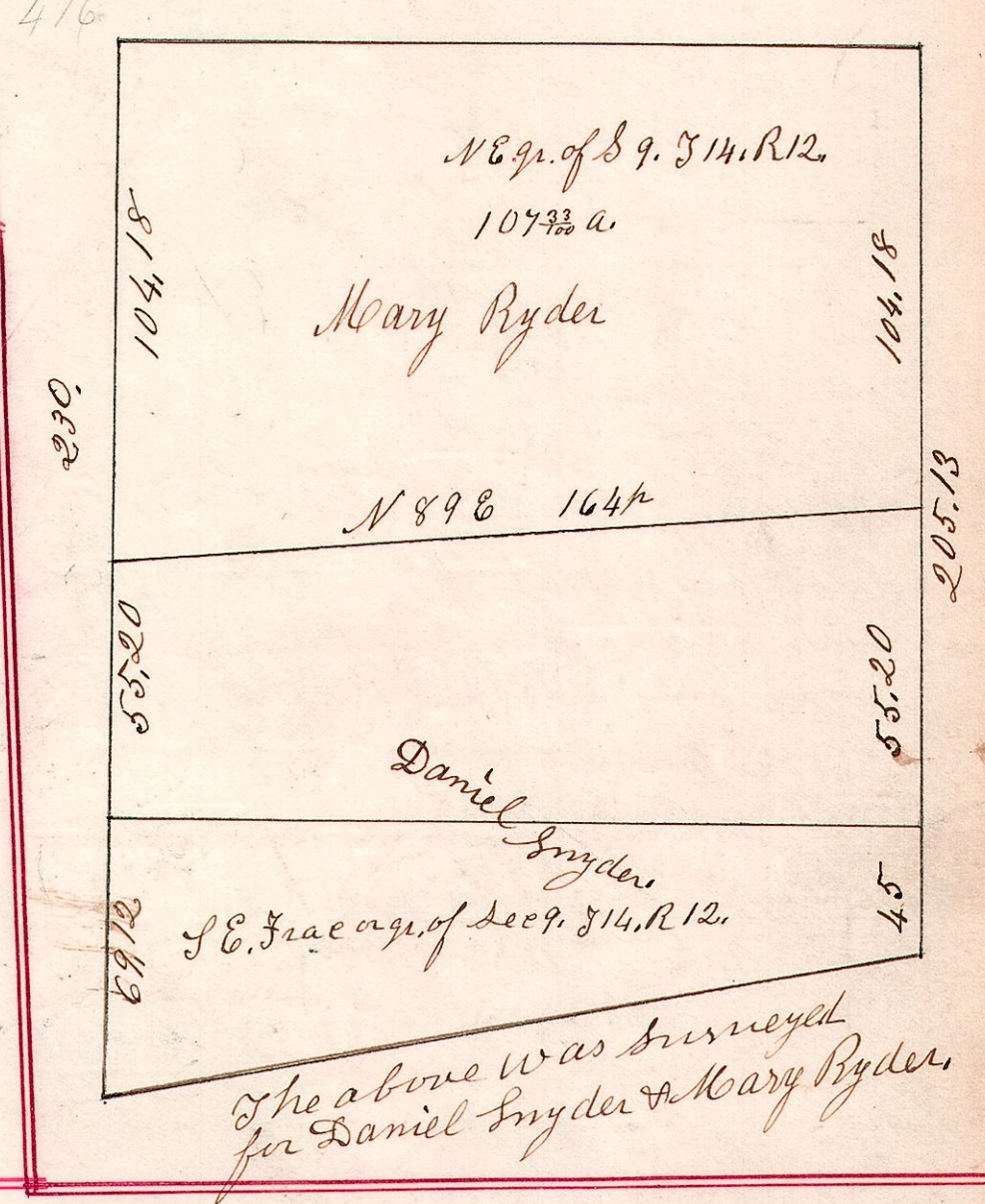


B	W. Oak	18	S 74W	43
"	Do	15	N 59W	5
E	W. Oak	16	N 74E	39
L	W. Oak	16	N 2W	42
F	Maple	6	S 27E	25
I	W. Oak	15	S 65E	22
M	W. Oak	16	N 49W	14

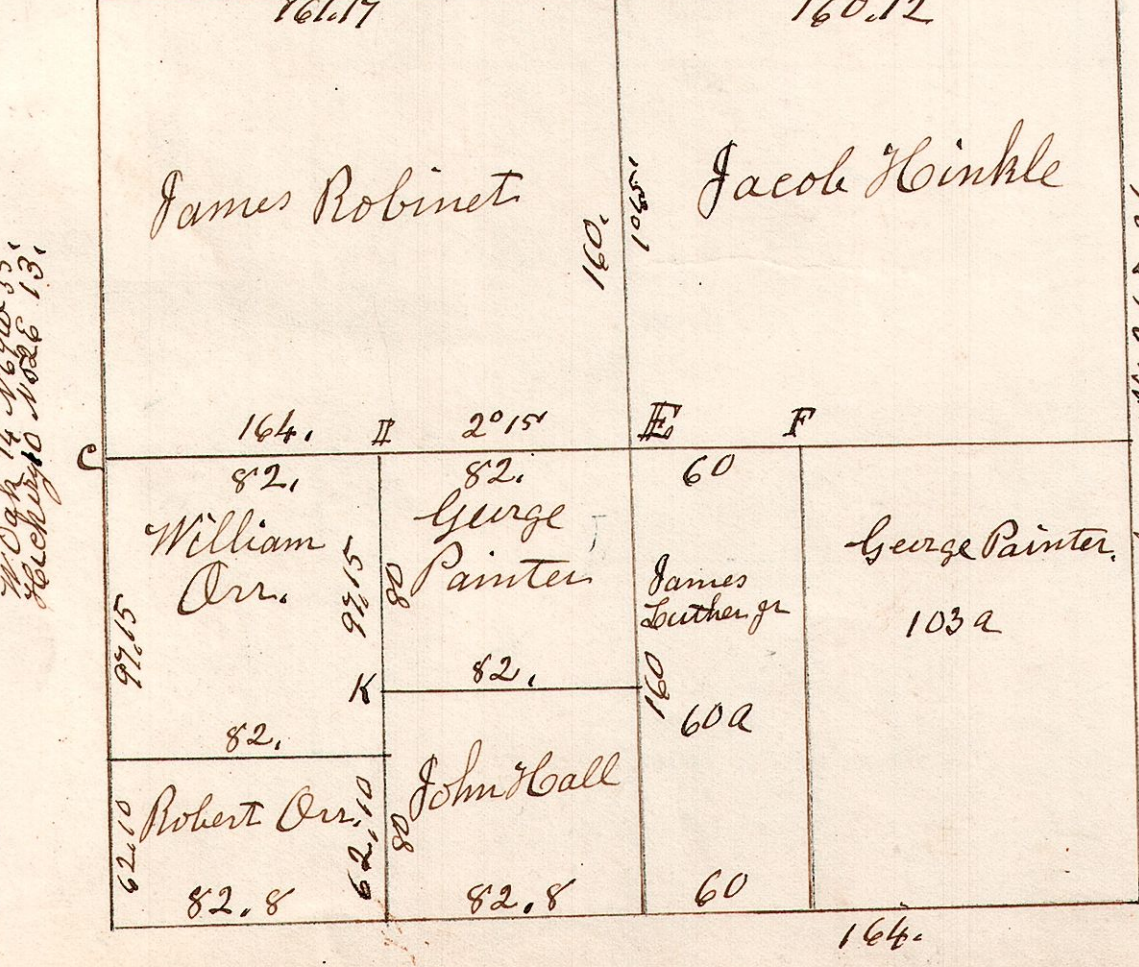
Three west parts include the NW 1/2 of N.E. and NW fraction of this section.



12.14.9. 1861. N.E. q. of Sec 9. T 14. R 12.



12.14.2. September 13 1827. Surveyed Sec 2. T 14. R 12. W. Oak 12 N 9W 17. Ironwood 5 S 7E 17.



E	W. Oak	24	N 84E	60
F	W. Oak	18	N 43W	18
"	B. Oak	18	S 47E	60
G	Hickory	15	N 35W	18
"	W. Oak	20	N 24W	18
H	Ironwood	6	N 86E	30
I	Cucumber	16	N 27E	31
"	B. Oak	16	S 32W	32
K	Chestnut	30	S 64E	40
"	W. Oak	20	S 29W	21
L	Stone	12	the corner.	