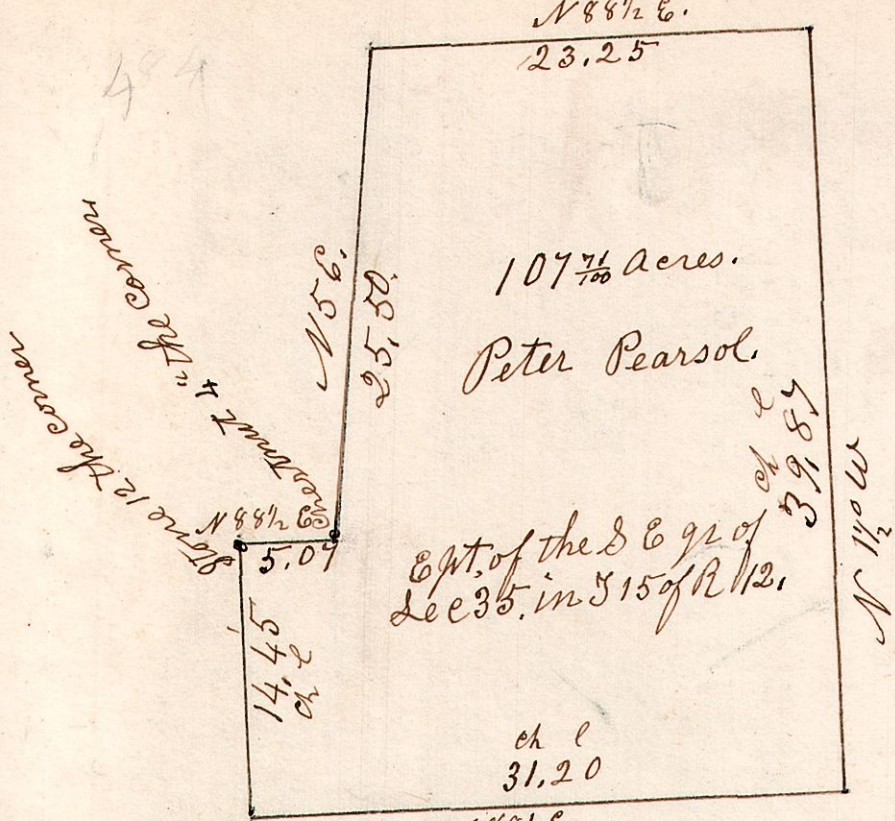


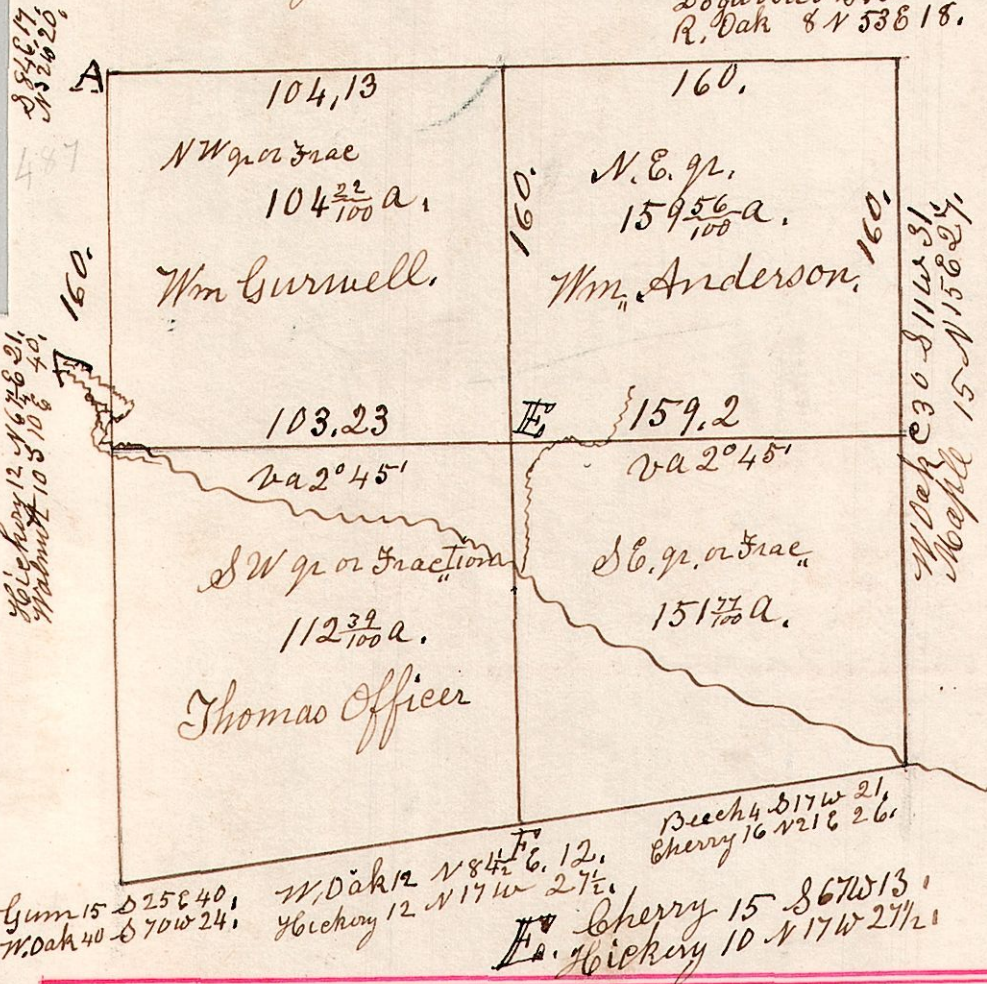
12, 15, 35. Ept. S Eqr. of Sec 35 S 15, R 12.  
November 7<sup>th</sup> 1833.



Surveyed the above Nov 7<sup>th</sup> 1833.  
Being the east part of the S E qr. of S 35 S 15, R 12.

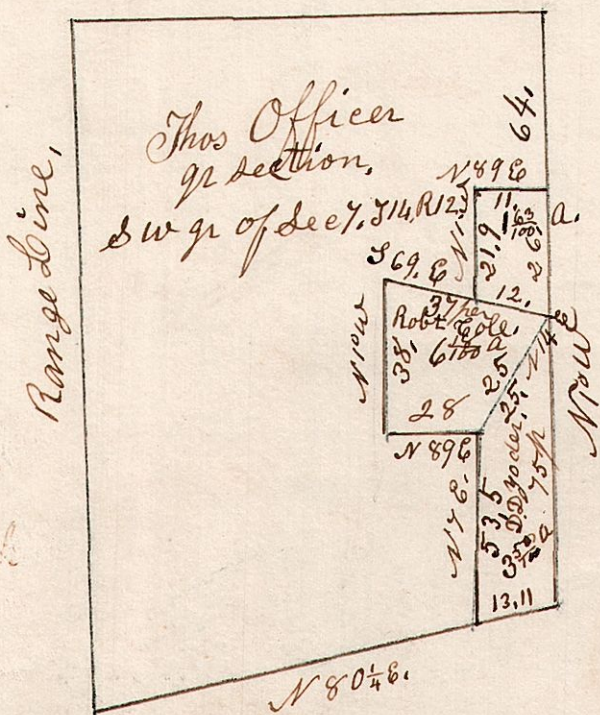
12, 14, 7. Surveyed Sec No 7, S 14, R 12 April 24<sup>th</sup> 1827.

Dogwood 5 S 63 W 6.  
R. Dak 8 N 53 E 18.



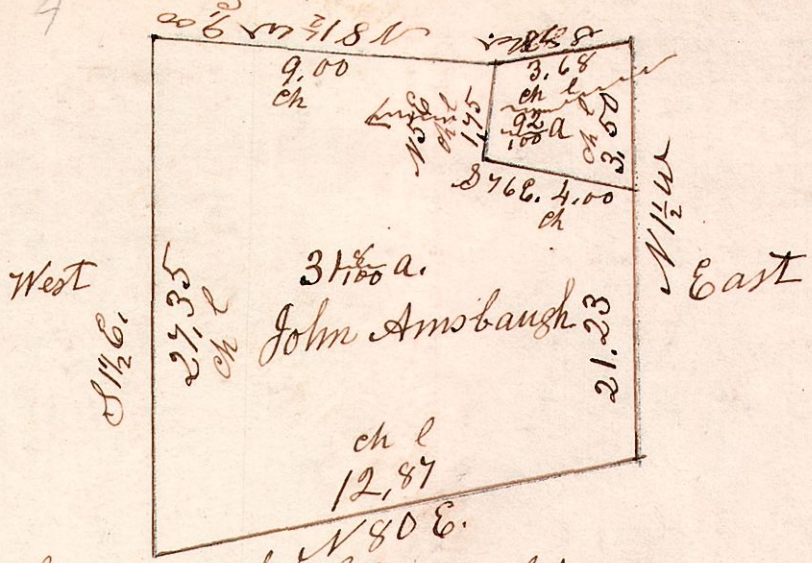
W. Dak 15 S 25 E 40.  
W. Dak 40 S 70 W 24.

12, 14, 7. Feb 12<sup>th</sup> 1849. Surveyed the  
S W qr. of Sec 7, S 14, R 12.



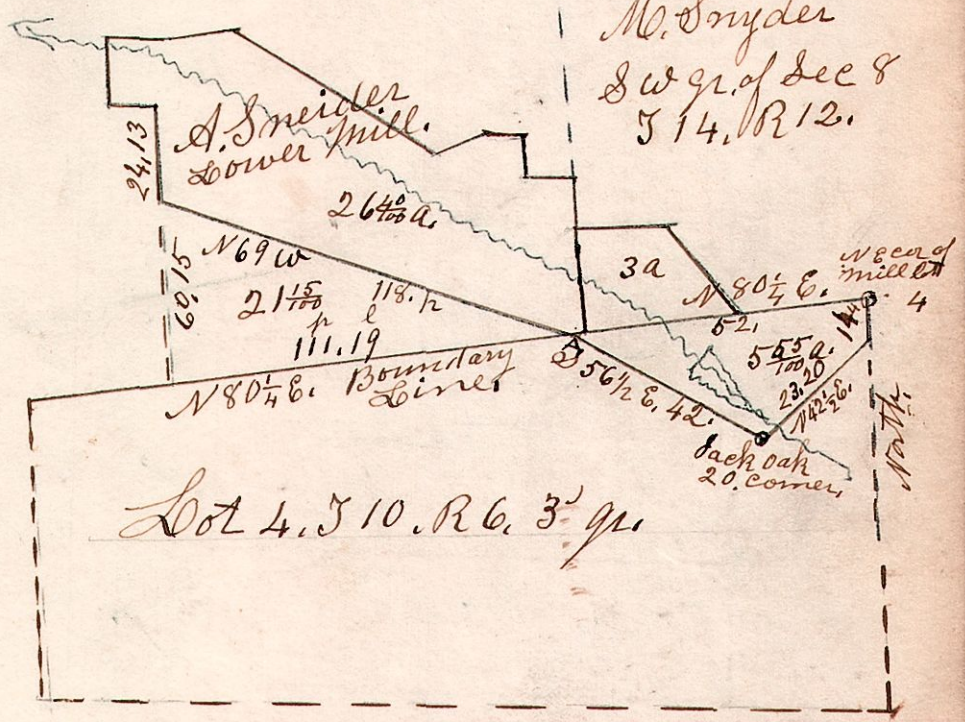
Jane Brink  
Joseph Brink  
March 23

12, 14, 7. S W pt. of the S E qr. of Sec 7, S 14, R 12. 151  
North

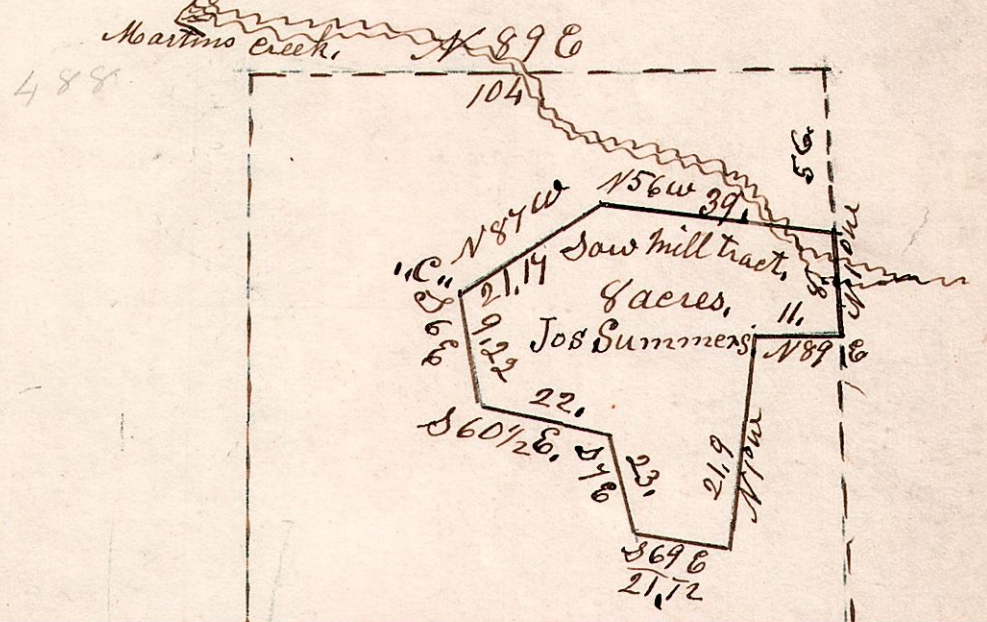


S W pt of the S E qr. of Sec 7. in S 14 of R 12.

12, 14, 7. August 20<sup>th</sup> 1852. Surv. Mill property, in  
S. E. qr Sec 7, S 14, R 12.



12, 14, 7. Surveyed Sept 18<sup>th</sup> 1852.  
Pt. of Ept. of S W qr Sec 7, S 14, R 12.



12, 15, 29. March 23<sup>rd</sup> 1855.  
Surveyed the N E qr of Sec 29, S 15, R 12.

