

Surveyed the town of Middletown
 Situated as follows, being one
 fourth of the lots is situated in
 the south west corner of
 Section No 15; one fourth
 in the north east corner of
 Section No 11; one fourth
 situated in the north west
 corner of Section No 12;
 one fourth in the south
 east corner of Section No 2
 in Township No 14 of Range
 No 12.

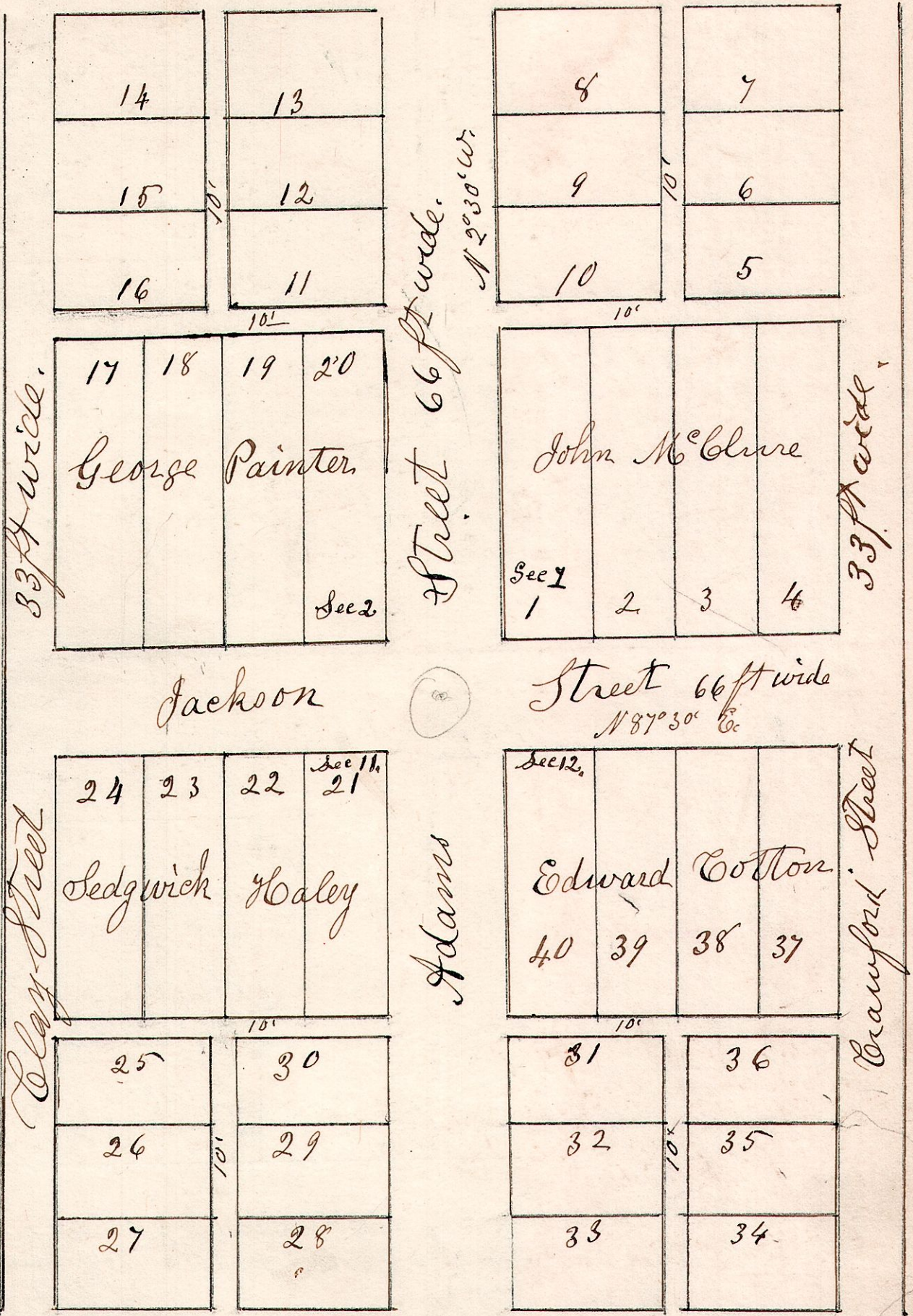
4 Proprietors names.
 John McClure,
 George Painter
 Sedgwick Haley
 Edward Cotton.

Size of the lots, 66 feet
 in front and 127 feet back.

Alleys 10 feet wide.

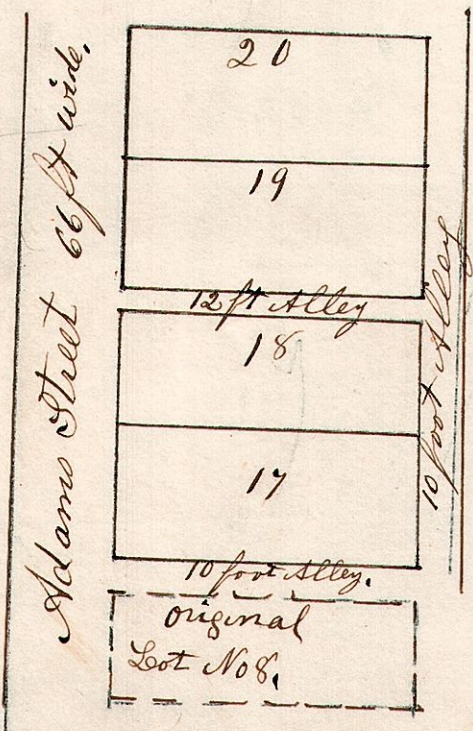
September 29th 1827.

Samuel Robinson
 County Surveyor.



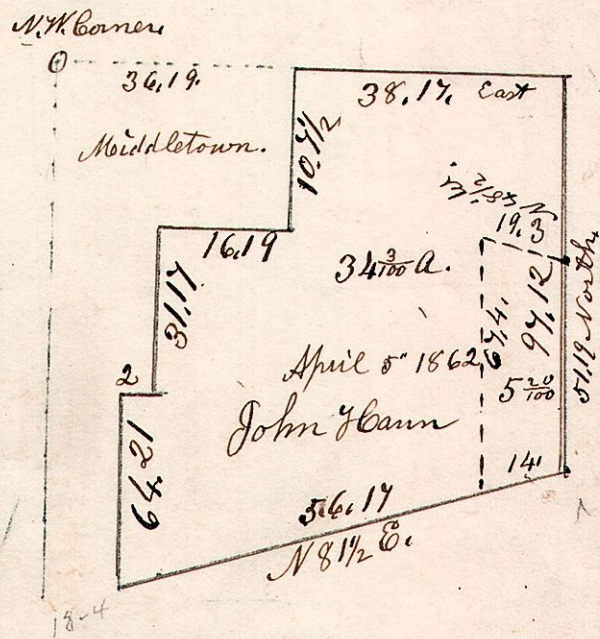
12.14.1. S W pt of the S W

qr of Sec 1. T 14. Range 12.
 Addition to Middletown.



12.14.12

March 1871. 5 acre piece



See Vol 2
 P 036.

18-4
 20
 22
 25
 26
 27
 28
 29
 30
 31
 32
 33
 34
 35
 36