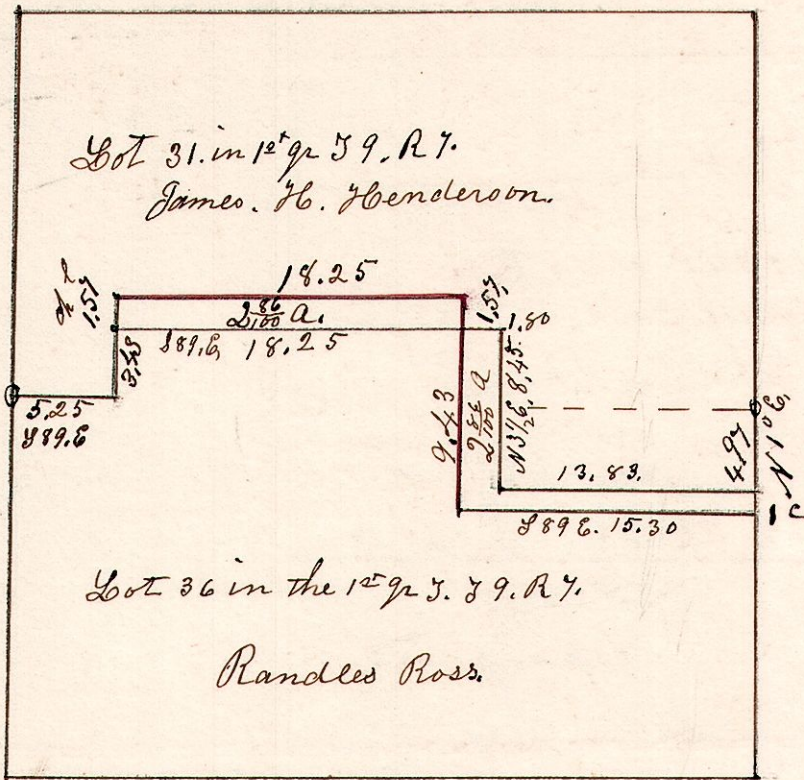
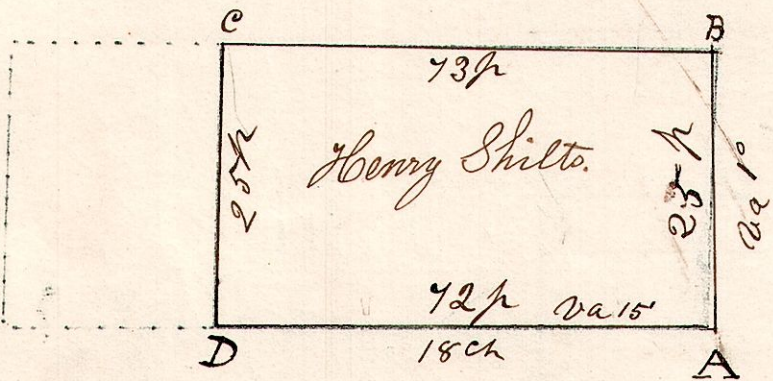


568



N.B. The Red line represents the former division line, the Black line represents the present division line.

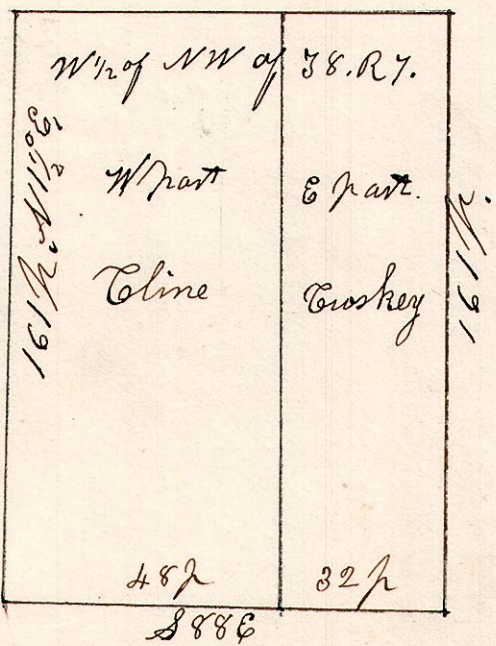
7.9.18. ^{6/2}/₂. October 29th 1829. Surveyed 11 ^{1/4} acres for Henry Shilts taken out of the South part of a 100 acre lot belonging to George Uhl. Beginning 30 perches 19 links East of the South west corner of the above described 100 acre lot. Which is situated in the north part of the E ^{1/2} of Sec 18. 59. R. 7.



A	Stone corner on Newark + Millerburg Roads
B	Beech 15 33810 21
"	Sugar 14 N 3° W 10
C	Beech 18 S 8 E 13
"	W. Oak 15 1776 19
D	Ironwood 8 114 W 22
"	Linn 18 N 80 E 17

S.W. cor of the 100 acre lot taken off the N part of the E ^{1/2} of S 18. 59. R. 7.

7.8.19. June 24th 1870. W ^{1/2} of NW gr. 58 R. 7.



7.9.7. 1st gr. April 11th 1871. Lot 7. 1st gr. 59. R. 7. Ct. W. R. School Land

