

Feb 29<sup>th</sup> 1864.

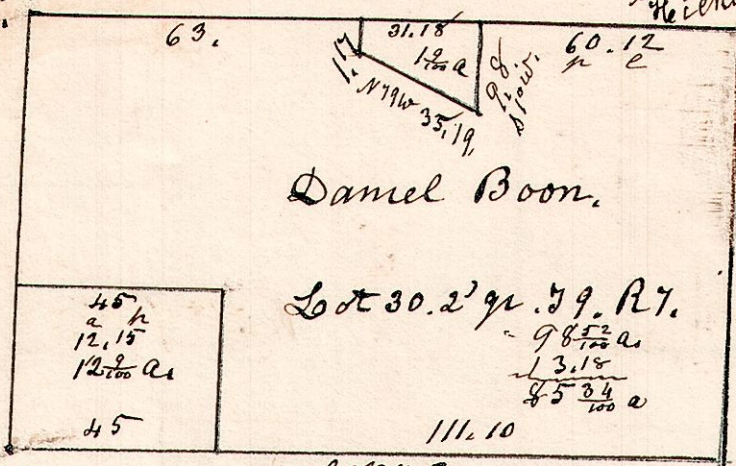
Lot 30 2<sup>nd</sup> 9<sup>th</sup> S 9. R 7.

W. Oak 9. S 52 E 41.  
30 36 N 61 W 42.

S 88 1/2 E.

155.5

Sugar 13 S 22 E 14.  
Hickory 10 N 6 W 25.



W. Oak 13 N 35 E 14  
B. Oak 12 N 45 W 35.

S 88 1/2 E.  
156.10.

Lionwood 6 N 35 W 17.  
Do 4 S 75 W 14.

Surveyed Feb 29<sup>th</sup> 1864.

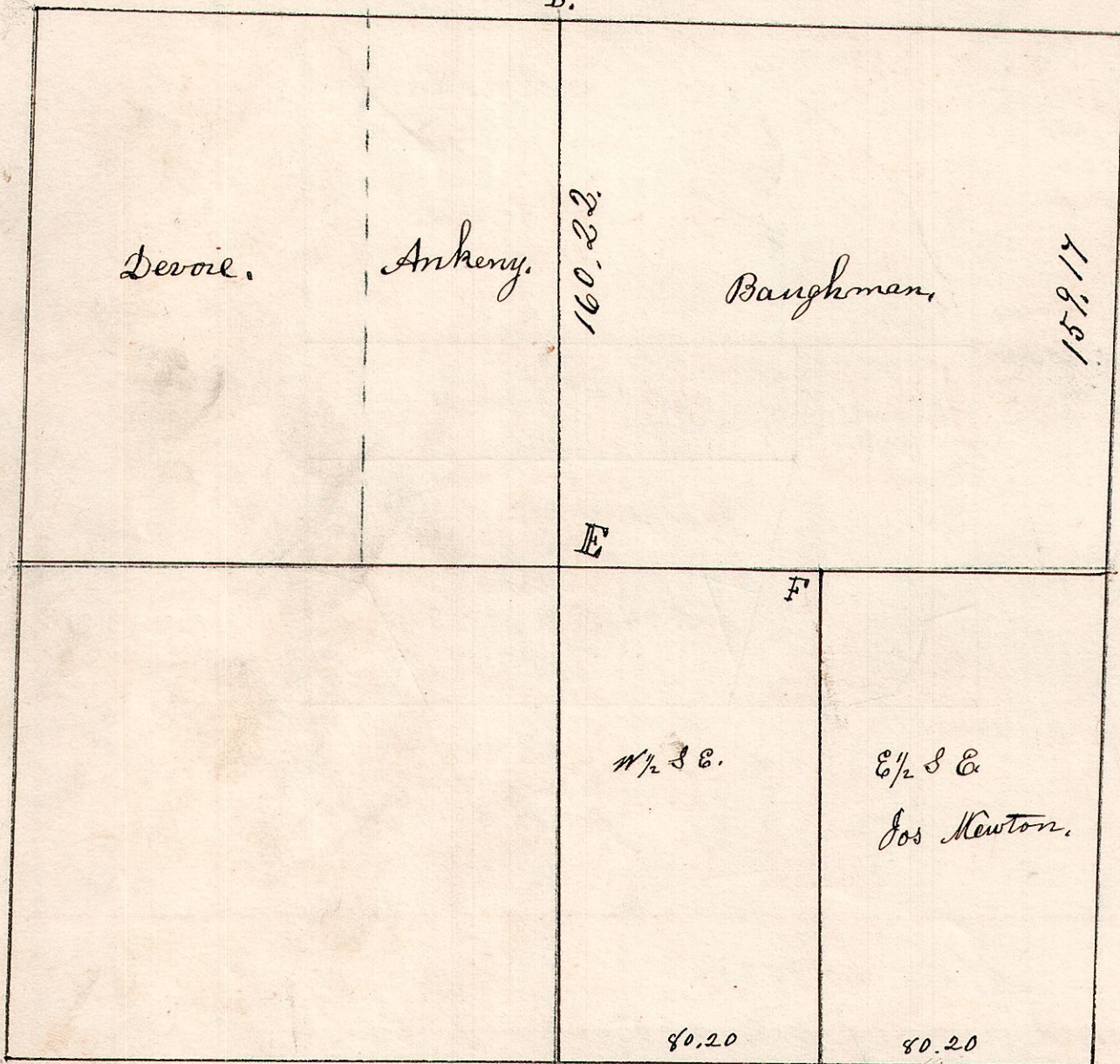
7.9.21.

S 21. 9<sup>th</sup> 9. R 7.

N 31. 323.17. Sec 21. S 9. R 7.

B. Walnut 4 S 81 E 41.  
R. Oak 15 N 57 W 21  
B.

S 88 E.



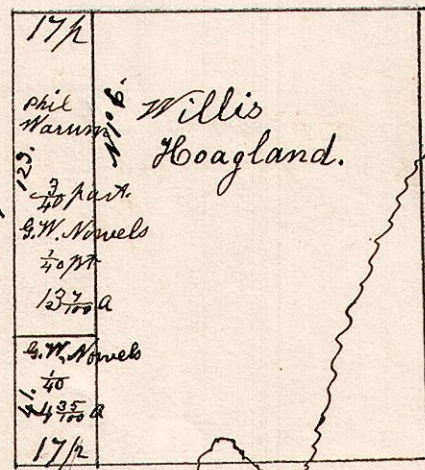
E. B. Walnut 6 N 43 E 50  
" R. Elm 8 S 58 1/2 E 28.

F. Beech 20 N 3 N 38 E 12.

G Hickory 15 S 79 E 17.

7.8.3. N 6 9<sup>th</sup>. March 30<sup>th</sup> 1855.

N 6 quarter of Section 3, 18. R 7.



Com.  
Charles Uhl.  
Thomas Lemmon  
Samuel Robinson.

Ch. Carver.  
John Leopold.  
Thos Lemmon.

Surveyor  
Samuel Robinson.

Killbuck.