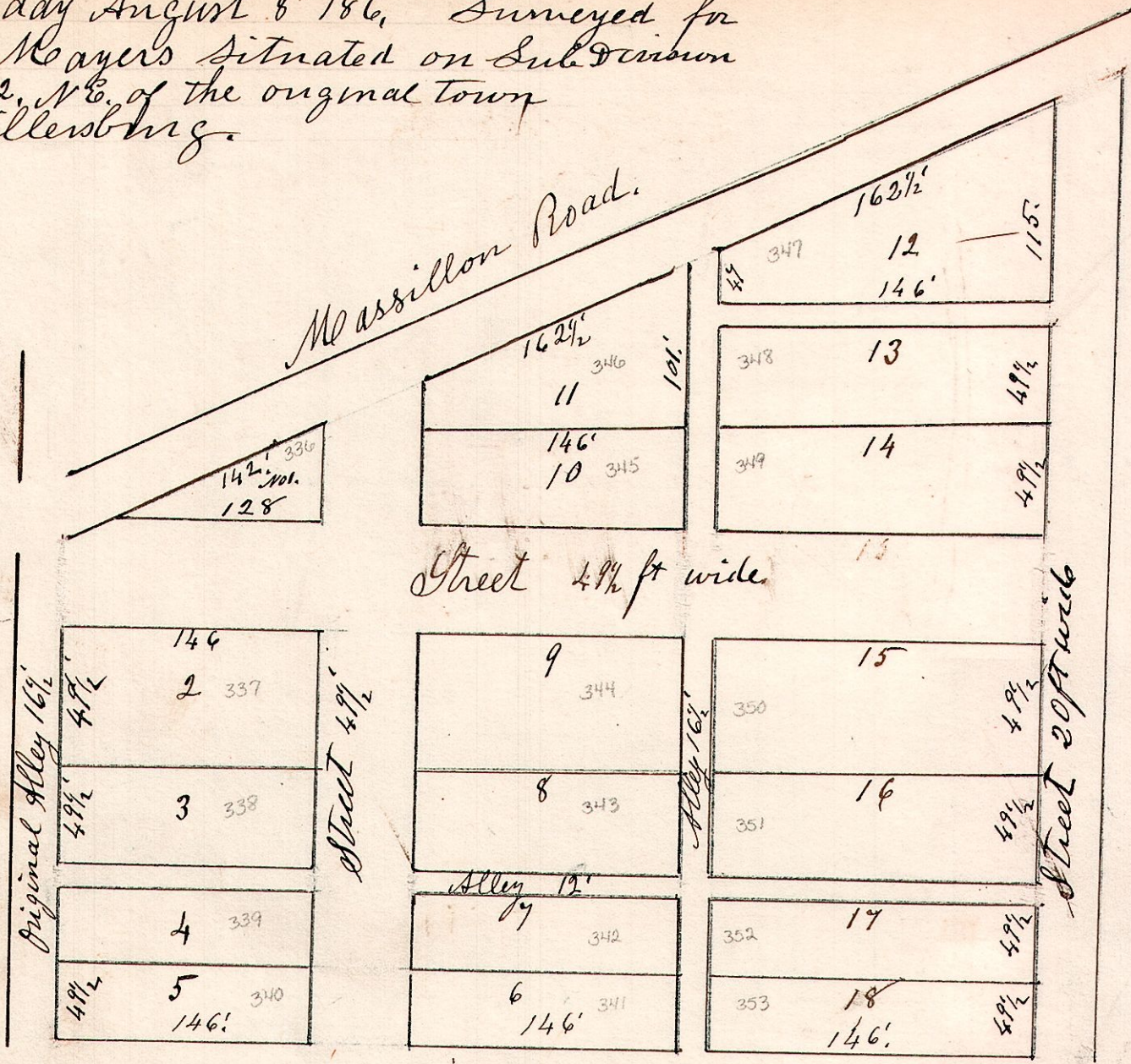
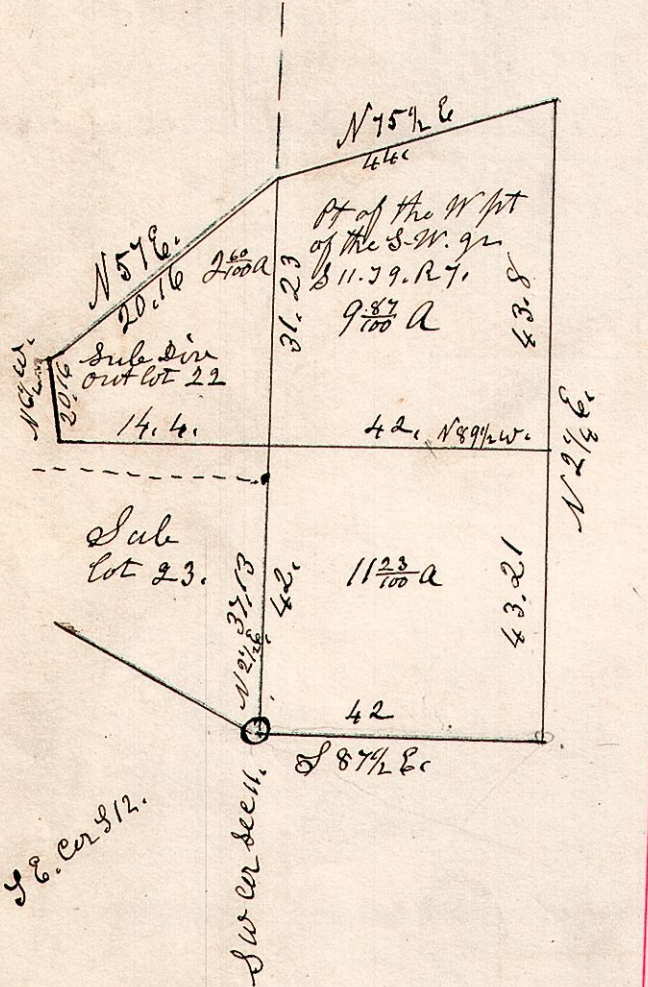


Wednesday August 8th 186, Surveyed for
 7.9. Louis Meyers situated on Sub Division
 out lot 42 N. 42. N.E. of the original town
 plat of Millersburg.



7.9.11. ^{sw} April 6th 1872 Surveyed
 for J.A. Estell & Wm Dix.



7.9.12. Surveyed Dec 11th 1841.
 W pt. of S.W. q. of Sec 12. 39. R. 7.

