

6, 8, 3^d q. Lots 5, 6, 7, 8 & 13. Military.

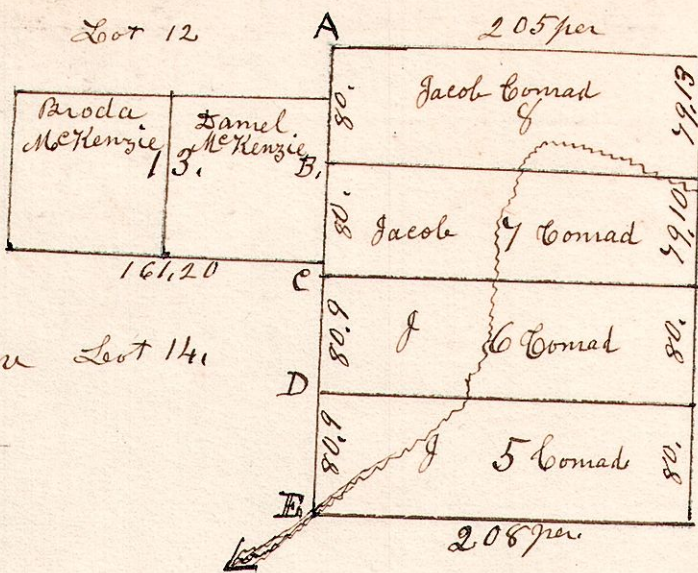
3^d q. T8. R6

July 3rd 1839.

From A to B is S 2^d W.
 " B to C is S 1^d 1/4 W.
 " C to D South.

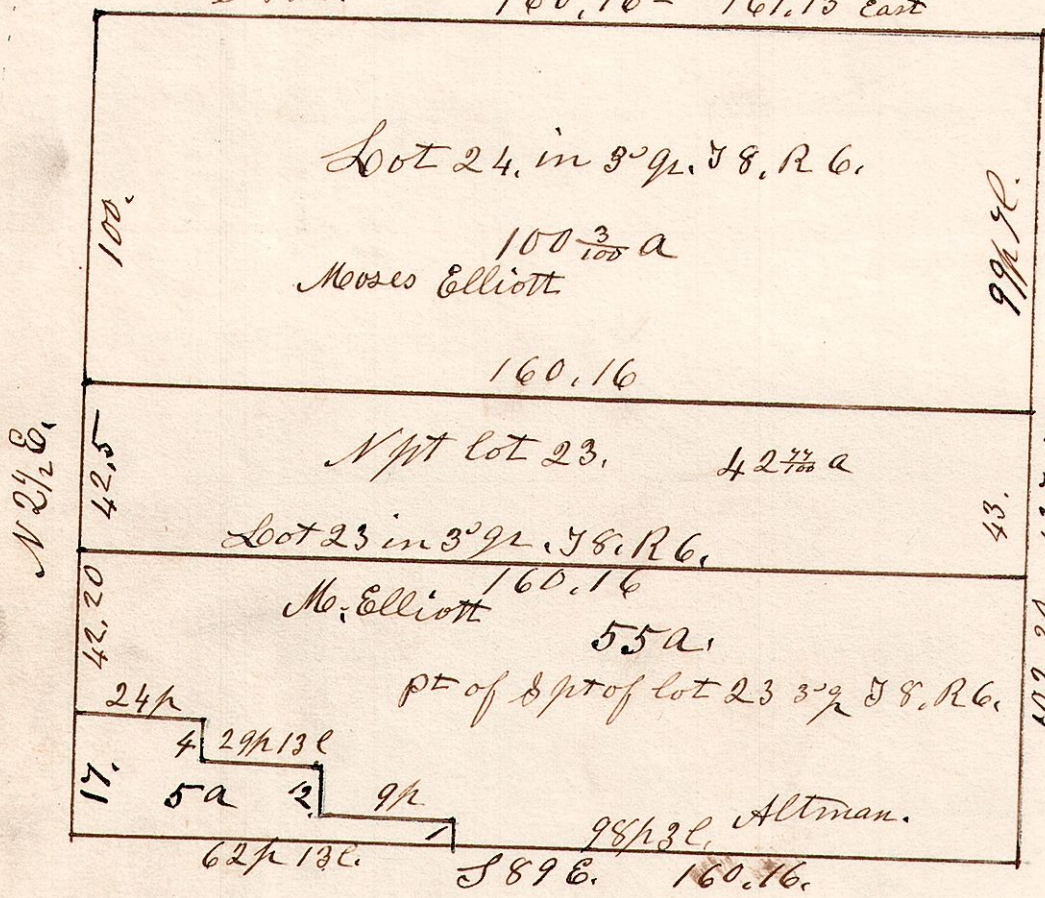
Surveyed the outlines of lots 5-6-7-8 for J. Comad.

Surveyed the S line of lot 13, and SW line N & S through the same for Mrs McKenzies.



6, 8, 23 & 24. February 17th 1870. Lots 23 & 24, 3^d q. T8, R6.

Surveyed for Moses Elliott. a very wet day. S 88^d E. 160.16 - 161.13 east



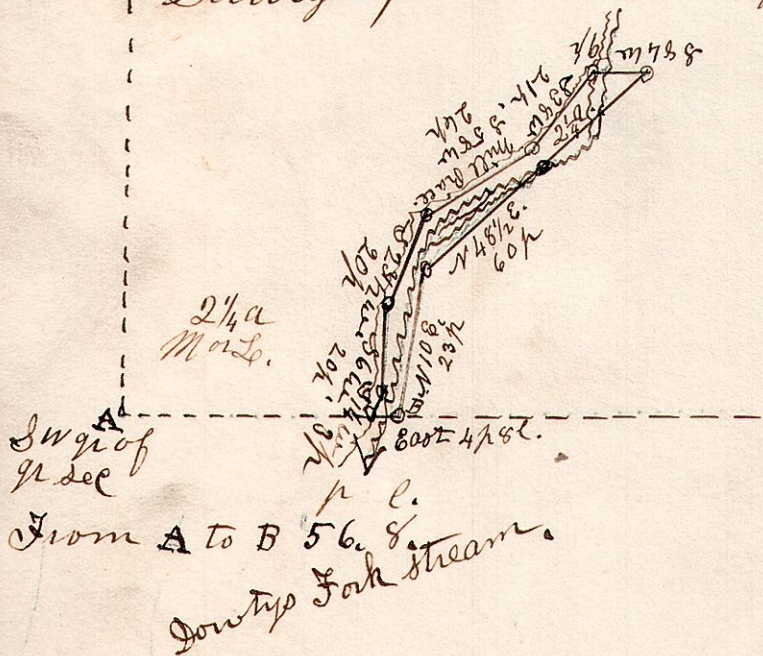
Elm 15 N 85 E 64.

May 13th 1873.

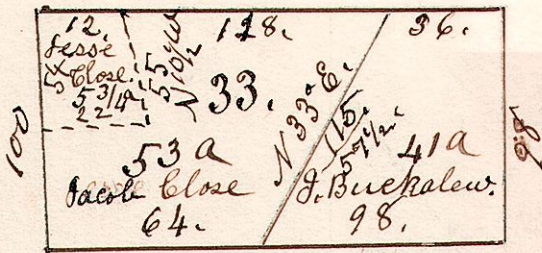
G. Keifer Survey. N 3 1/2 E

6, 8, 10. T8, R6.

March 19th 1861. Surveyed for Samuel Keifer.



6, 8, 33. 3^d q. March 25th 1837. Lot 33, 2^d q. T8, R6.



Lot 33, 2^d q. T8, R6. Surveyed June 20th 1855 for Andrew Elliott.

