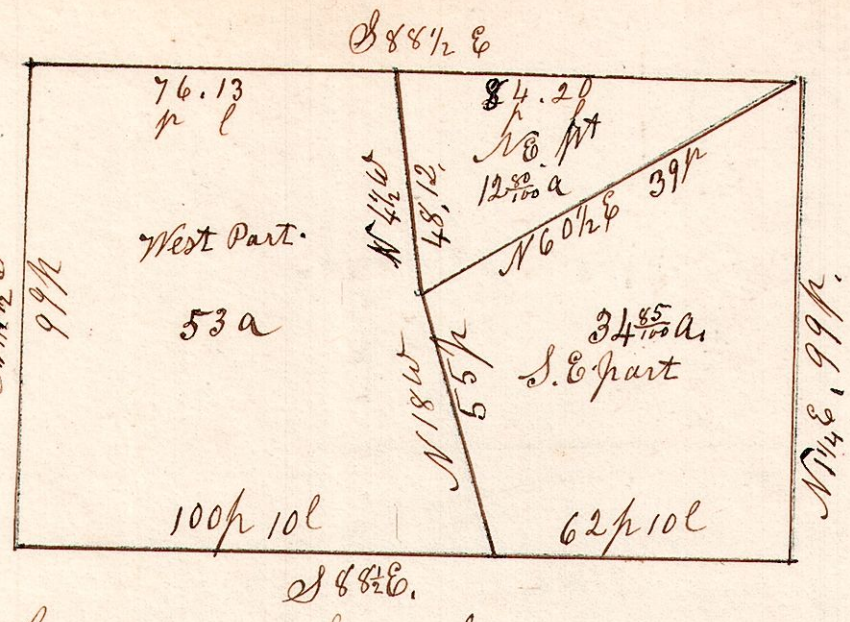


6. 8. 29. 2<sup>o</sup> gr

December 6<sup>o</sup> 1858.

Lot No 29. 2<sup>o</sup> gr 5<sup>o</sup> R. 6.

John N Elliott.



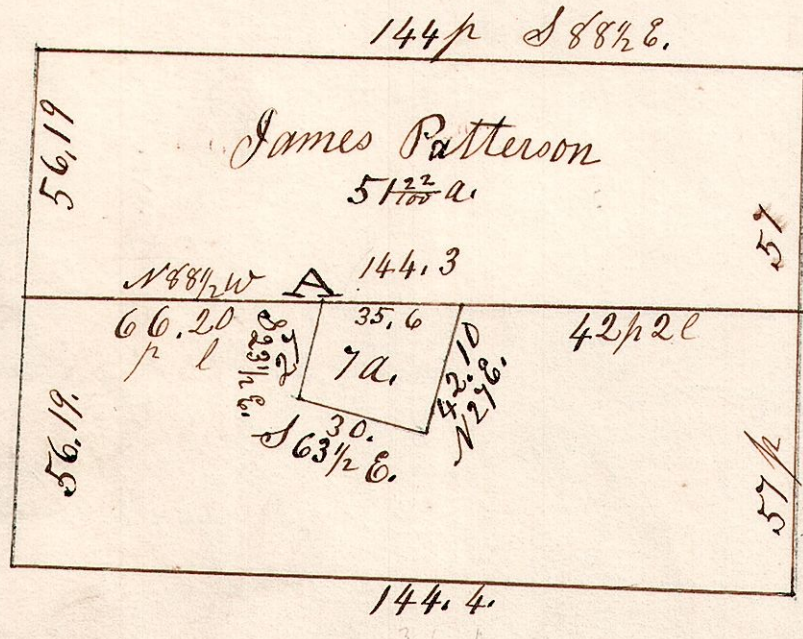
I do hereby certify that the above is a correct plat of Military lot No 29, in 5<sup>o</sup> R. of R. 6. 2<sup>o</sup> gr (Military) December 6<sup>o</sup> 1858.

Samuel Robinson Surveyor.

6. 8. 18. 3<sup>o</sup> gr.

November 6<sup>o</sup> 1868.

Lot 18. 3<sup>o</sup> gr. 5<sup>o</sup> R. 6.



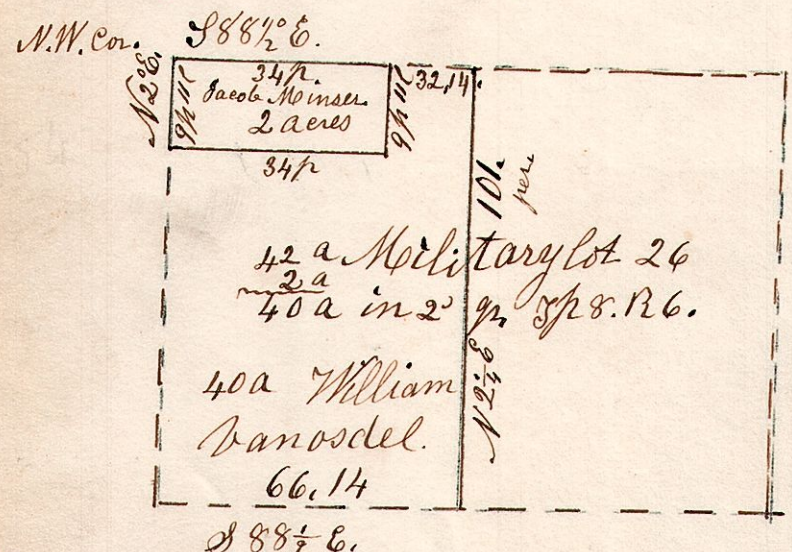
"A" is 2 p 14 l east of out 4 from E side.

6. 8. 26. 2<sup>o</sup> gr.

March 10<sup>o</sup> 1868.

Lot 26. 2<sup>o</sup> gr. 5<sup>o</sup> R. 6.

Surveyed 2 acres for Jacob Winsler.

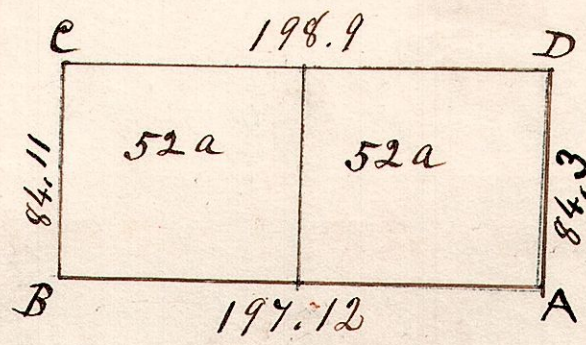


May 12<sup>o</sup> 1873.

6. 8. 3. 2<sup>o</sup> gr.

May 24<sup>o</sup> 1869.

Lot 3. in 2<sup>o</sup> gr. 5<sup>o</sup> R. 6. Military.



Robert Elliott.

A	Sugar	4	N 19 E	18
"	W. Oak	24	S 23 1/2 W	30
B	W. Oak	20	S 38 E	32
"	do	10	S 85 1/2 W	17
C	Maple	7	N 73 1/2 W	54
"	Hickory	12	S 66 1/2 W	50
D	Hickory	6	S 29 1/2 W	23
"	Ash	5	N 39 1/2 E	13