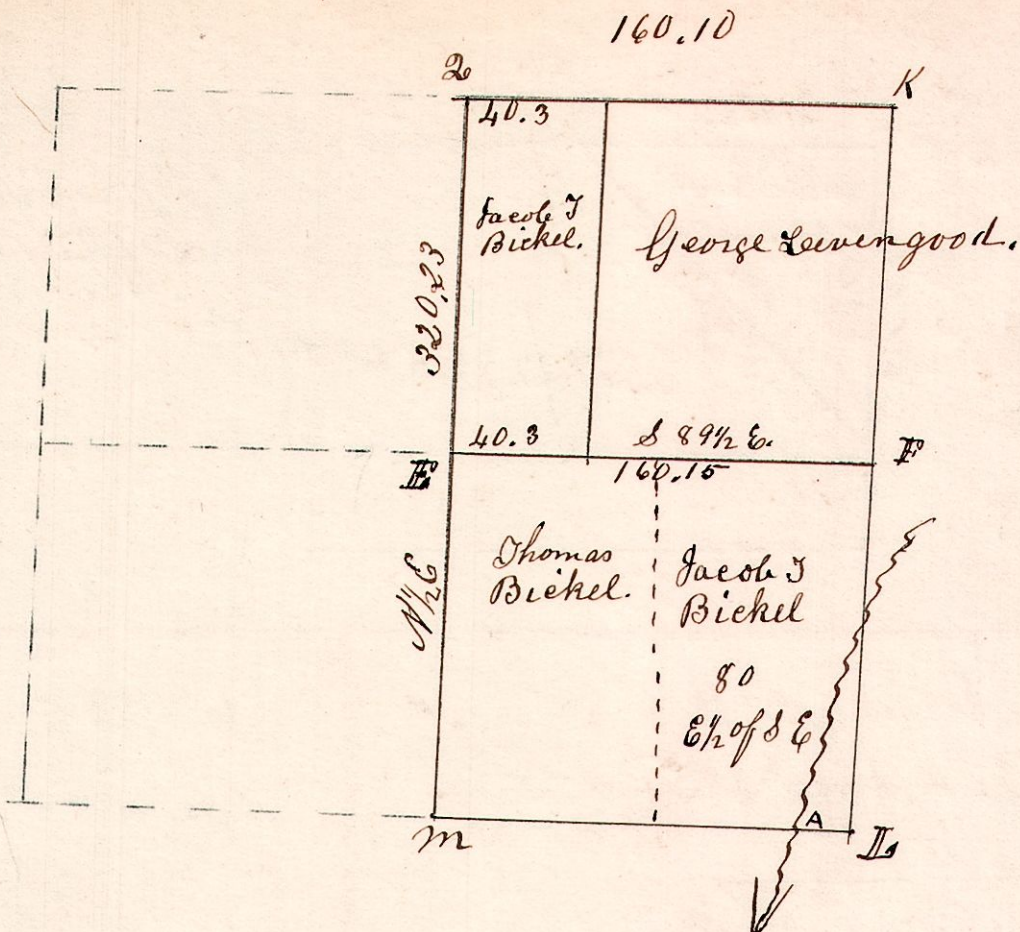


6. 8. 21.

Nov 26th 1850. Surveyed E¹/₂ of Sec 21. T8. R6.

K	Woak	44	S 52 W	17
"	Hickory	14	N 60 E	11
L	Maple	24	S 41 W	16
"	W. Oak	30	N 41 W	16
M	Hickory	12	N 51 E	21
"	Beech	8	N 85 E	21
Q	Maple	16	S 11 W	7
"	Gum	12	N 11 W	15

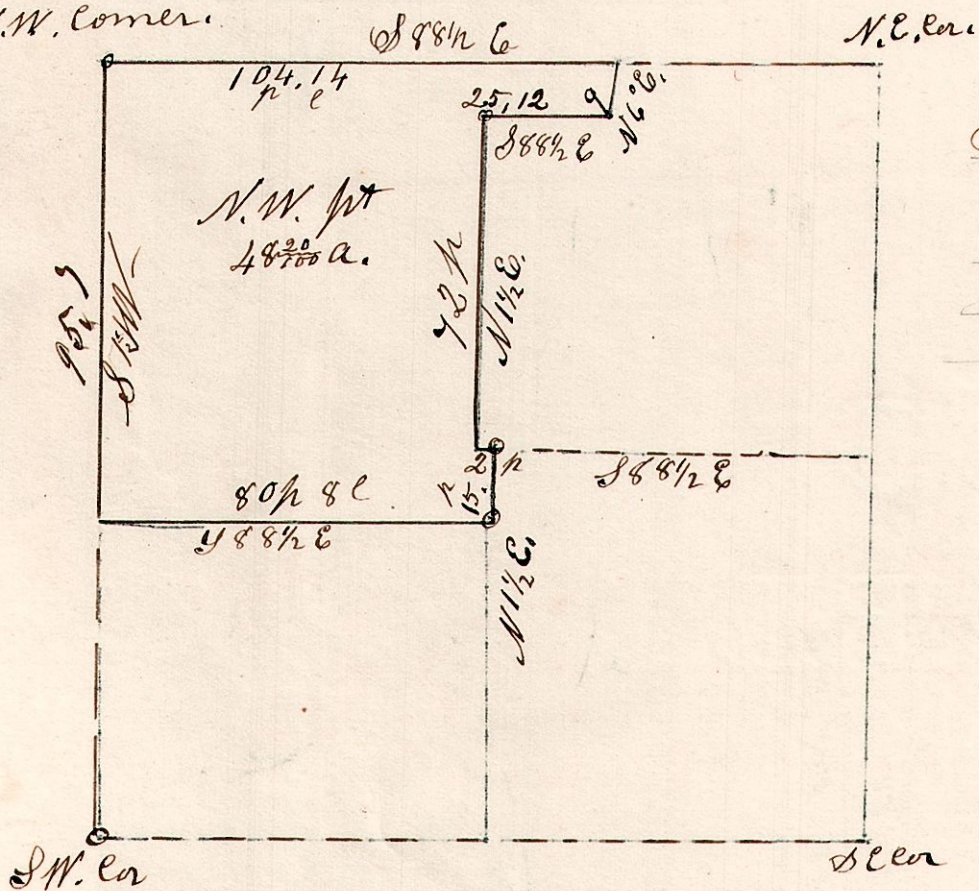
Stone Planted at the corners.
A. Saw Mill, on coline bet. Cos 4 Holmes.



6. 8. 21. s.w. n. May 3rd 1869.

S.W. q^r of Sec 21. T8. R6.

N.W. Corner.



I do hereby certify that the above is a correct plat of the south west quarter of Section 21, in Township Eight of Range 6, in Holmes County Ohio, May 3rd 1869. Samuel Robinson, Surveyor.

6. 8. 20. 2^o.

December 31st 1868.

Lot 20. 2^o q^r. T8. R6. S 87 1/2 E.

Dec 31st 1868.

Surveyed the
9.82
9.82
15.82
4.

The balance Surveyed by J. L. Richeson.

