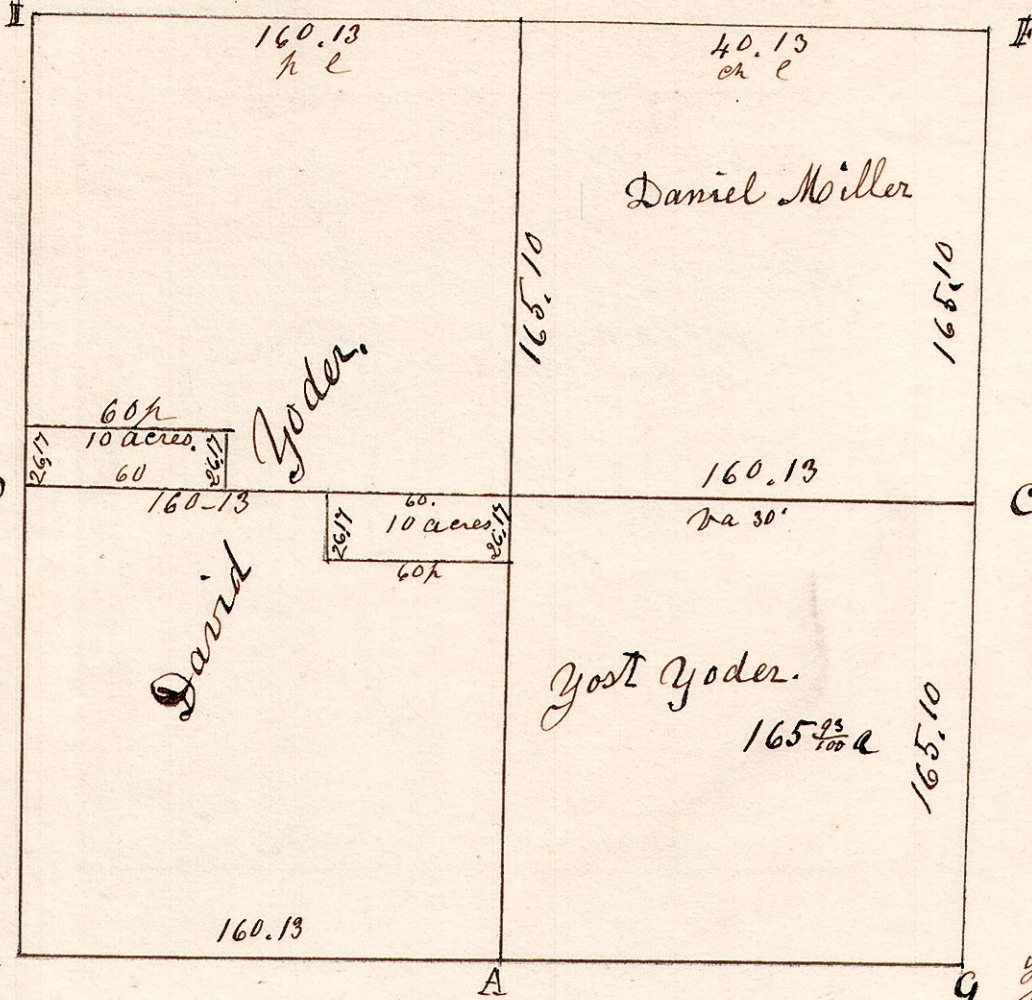


6.8.2

December 3<sup>d</sup> 1829. Surveyed Section No 2 in Township 8 of Range 6.  
For the following persons, and in the following manner.

W Oak 30 N 73 E 29.  
Maple 12 N 71 W 17.

Maple 18 S 4 W 20.  
Do 12 N 45 E 14.



Hickory 15. W. 14.

C Hickory 12 N 80 E 16.  
Ash 5 N 80 W 11.

N.B. The 2. ten acre pieces was surveyed in 1834.

Maple 14 N 13 E 12.  
W. Oak 20 S 55 W 15.  
E. Beech 15 S 55 E 5 1/2.  
Maple 12 N 84 W 17.

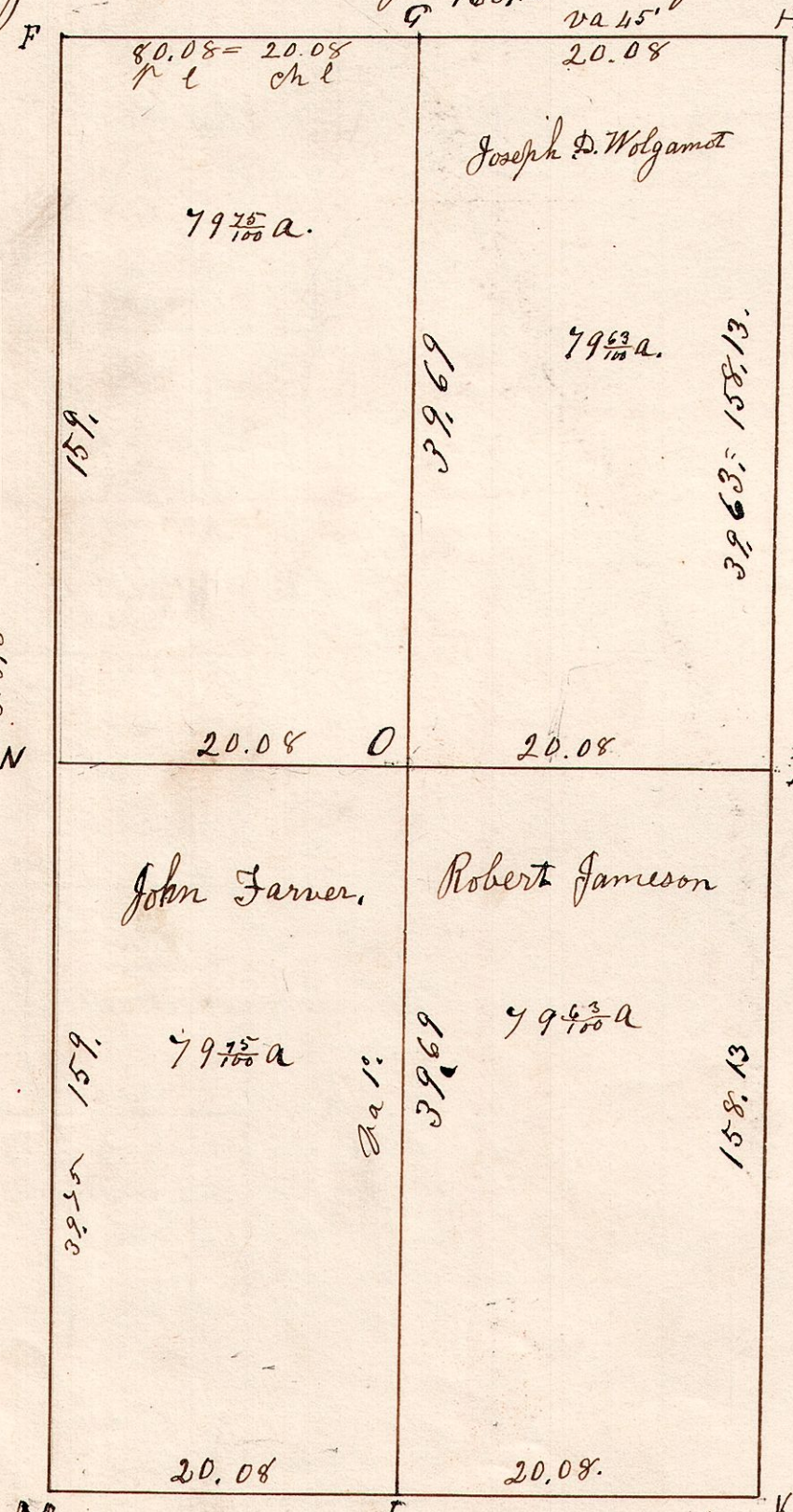
Beech 20 N 66 W 20.  
Do 16 N 55 E 40.  
W. Oak 24 S 35 W 24.

Hickory 13 S 37 W 3.  
W. Oak 30 N 54 E 10.

6.9.18.

February 24<sup>th</sup> 1832. Surveyed the west 1/2 of S 18. T 9. R 6 as follows

Elm 12 S 57 E 22.  
Chestnut 24 S 80 W 22.



Hickory 20 N 14 W 36.  
Maple 36 S 24 W 52.

Beech 24 N 75 W 24. N  
Maple 21 S 45 E 21.

Chestnut 40 N 33 W 25.  
Hickory 16 S 33 E 34.

O Hickory 14 N 87 W 42.  
Do 12 N 19 W 36.  
W Oak 40 N 48 E 35.  
Ash 6 S 50 E 30.

center S 3/4 ac.

W. Oak 24 S 41 E 33.  
Do 34 S 16 W 39

Hickory 24 S 88 W 18.  
W. Oak 20 N 3 W 23.

K Sugar 16 N 84 W 26.  
Maple 12 S 24 W 52.