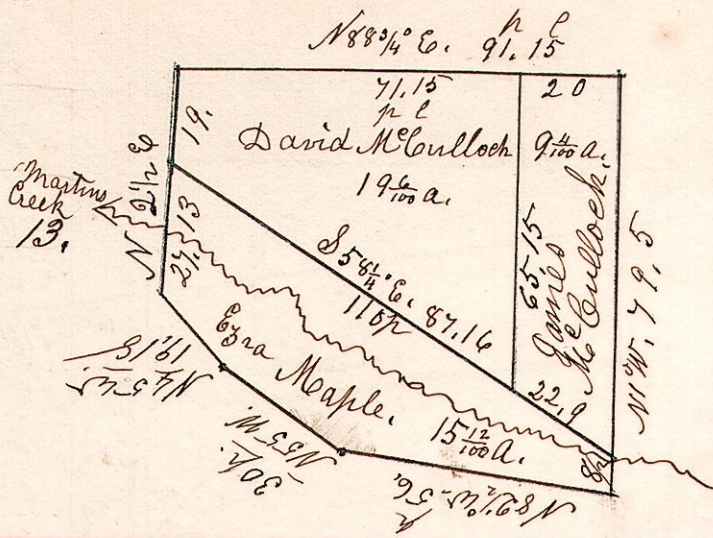
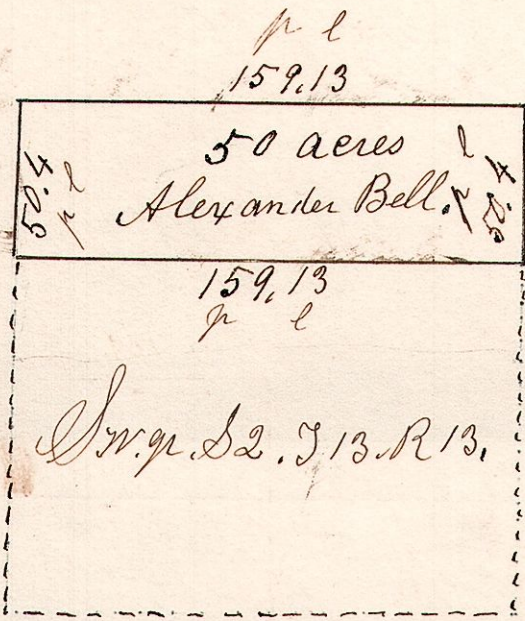


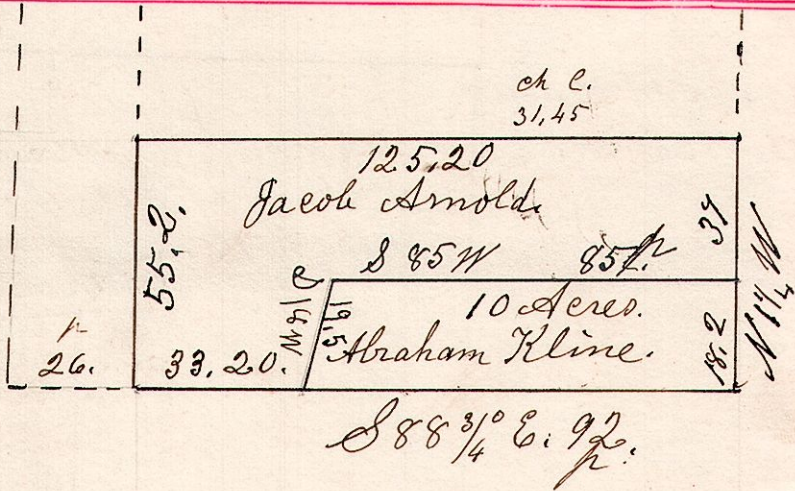
13. 13. 12. January 16<sup>th</sup> 1860.  
 Surveyed the north east part of  
 the north west quarter of  
 Section 12 in Township 13. of Range 13.



13. 13. 2. S.W. June 24<sup>th</sup> 1835.  
 Surveyed 50 acres of land  
 taken off of the South west  
 quarter of Section 2, in  
 Township 13 of Range 13.



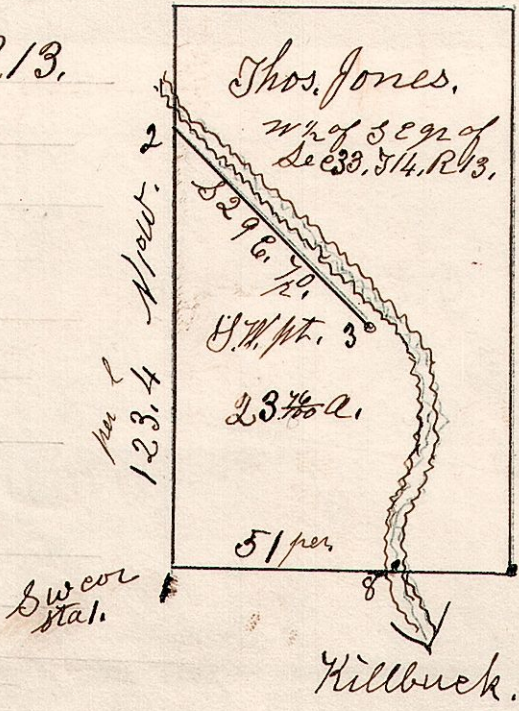
13. 13. 12. Sept. 2<sup>nd</sup> 1846.  
 Surveyed the west half  
 of Section 12, in  
 Township 13. of Range 13.



13. 14. 33. April 10<sup>th</sup> 1871.

W 1/2 of S. E. q. of Sec 33. T. 14. R. 13.

- 2. S 29 E 40 per
- 3. S 39 1/2 E 20 "
- 4. S 43 1/2 E 18 "
- 5. S 17 1/2 E 6 "
- 6. S 55 1/2 W 12 "
- 7. S 42 W 8 "
- 8. S 27 E 15 " to center of creek.



Surveyed S W pt. 23 3/10 a.