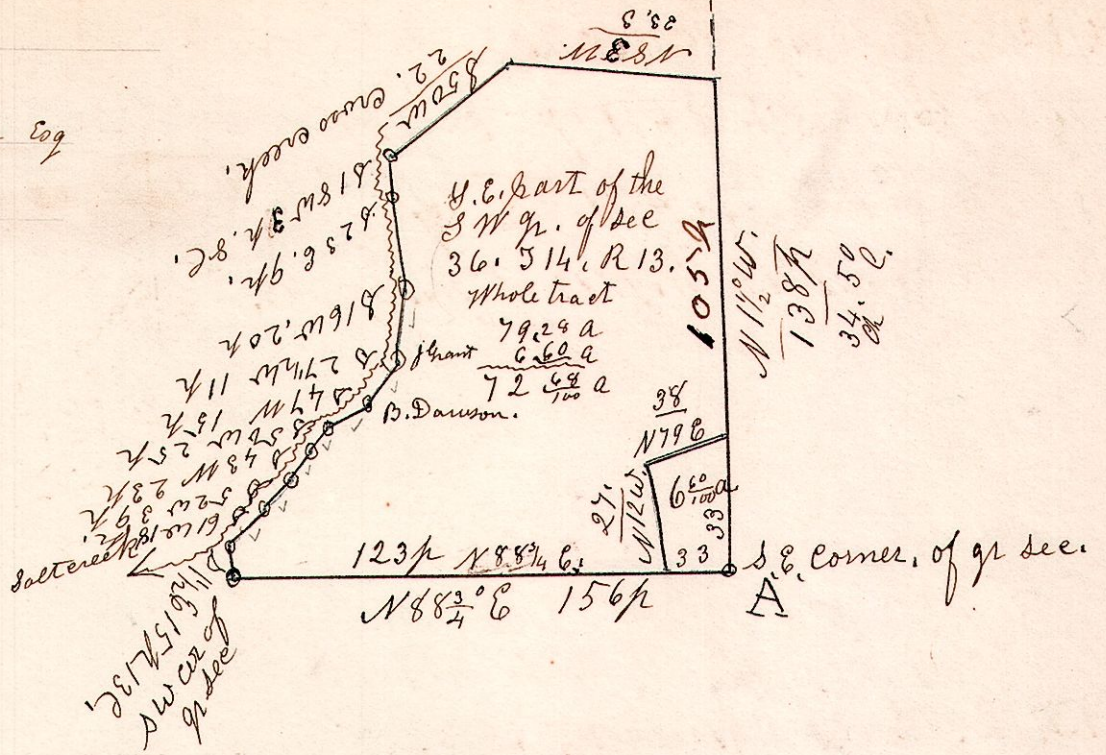


13.14.36. May 9th 1851.

Surveyed for James McFadden Esq

Benom Dawson 72⁶⁰/₁₀₀ a.

John Grant 6⁶⁰/₁₀₀ a.



13.13.16. April 7th 1841.

S 16. S 13. R 13.

By camae 12. N 11 W 25. 161.2 1/2

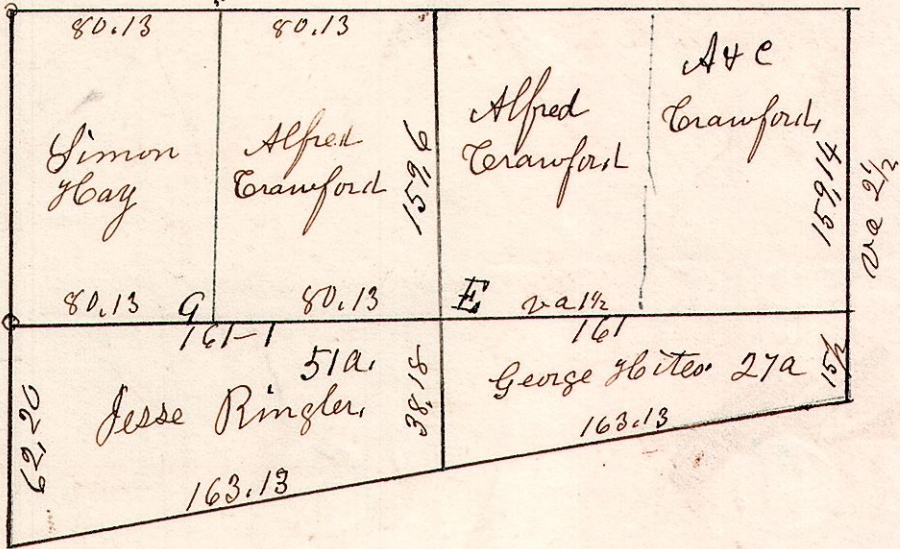
159.4

E. W elm 7 S 59 E 24.
Beech 9 N 27 W 41.

W. Oak 18 N 80 E 10.
Do 23 N 79 W 25 1/2

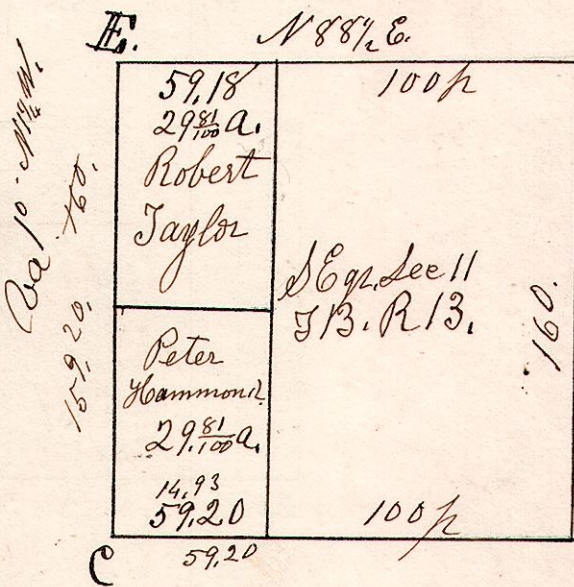
F. W oak 14 N 32 E 11.
Do 15 S 71 W 8.

G. Stone 6" corner.



13.13.11. S.E. quarter of Section 11. in Township 13 of Range 13.
April 26th 1847.

The South east part of Sec 11. S 13. R 13



E. W Oak 12 S 23 W 20.
" W. Walnut 8 N 43 W 14.
C Maple 10 N 42 E 30.
" W. Oak 18 N 69 W 26.