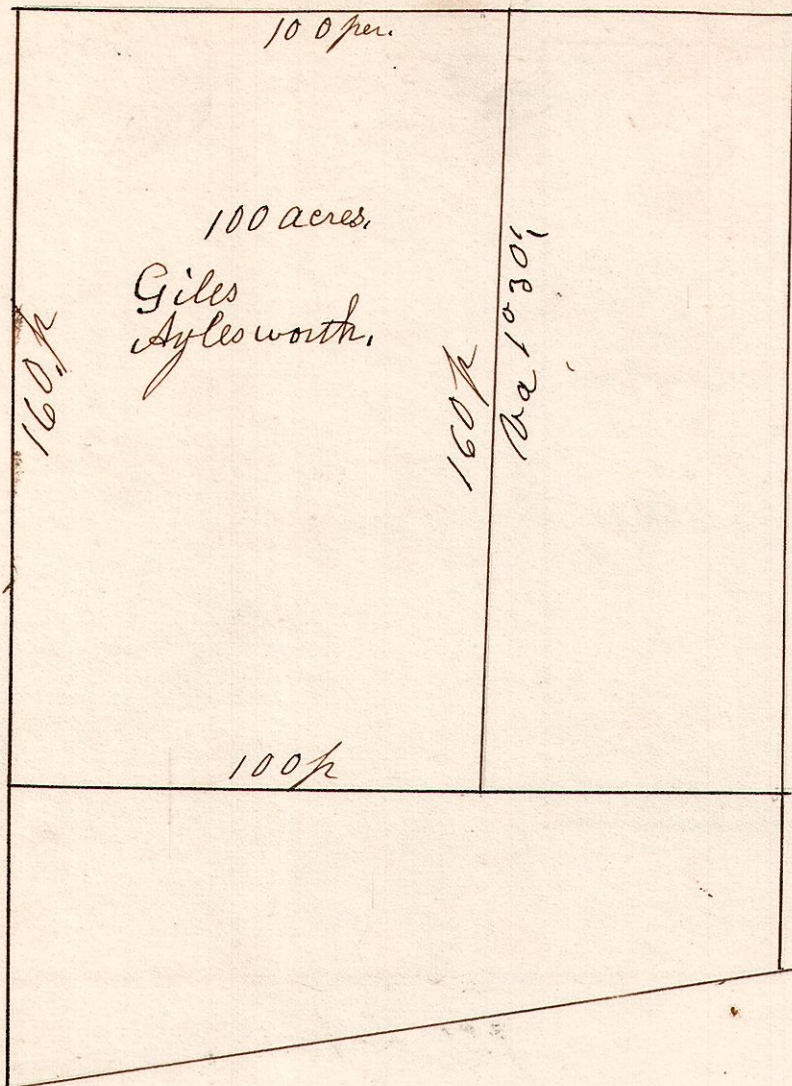


13. 13. 18. May 17th 1839. NW pt NW q. Sec 18. T 13. R 13.

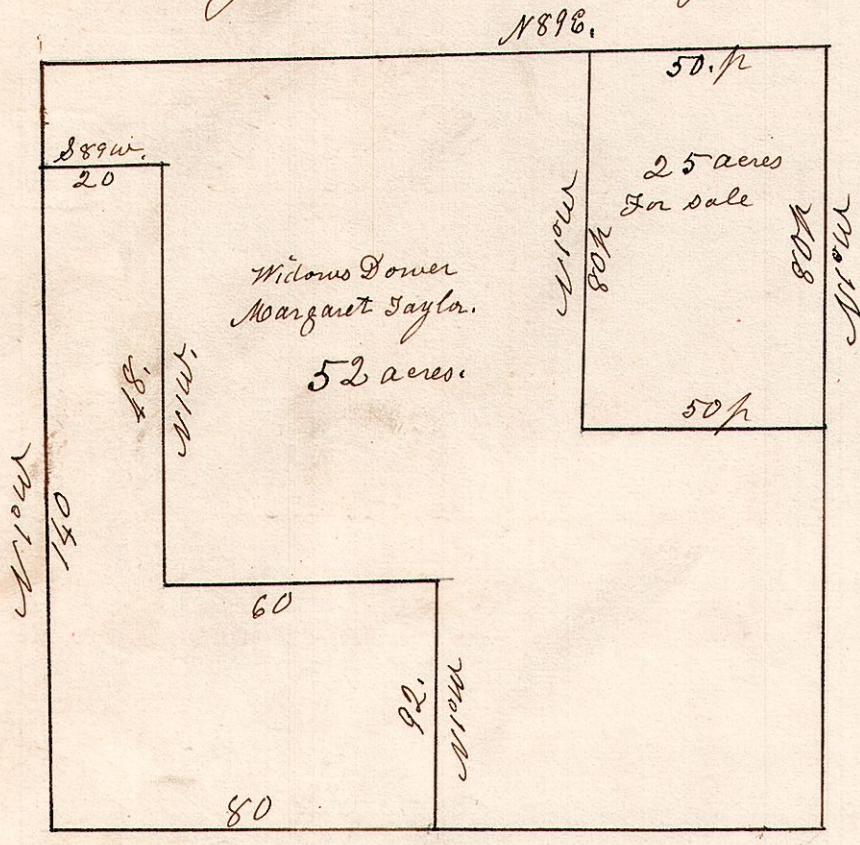


May 17th 1839.
 Surveyed 100 acres the
 NW part of NW q. of
 Sec 18. T 13. R 13.
 Stone planted at the corners.

Stone planted
 at the corners.

m. oak 24 N 88° W 8 1/2' B
 Do 5 S 15 1/2° E 29'

13. 14. 35. May 15th 1846. Surveyed the NW q. of Sec 35. T 14. R 13.



NW q. Sec 35. in T 14 of R 13
 Surveyed May 15th 1846.
 Commissioners
 James McFadden
 Cornelius Ammerman,
 Robert Slack
 Chain carriers,
 Parkison Grant
 John Grant.

950
 10
 8
 2
 20
 50
 30
 17
 28