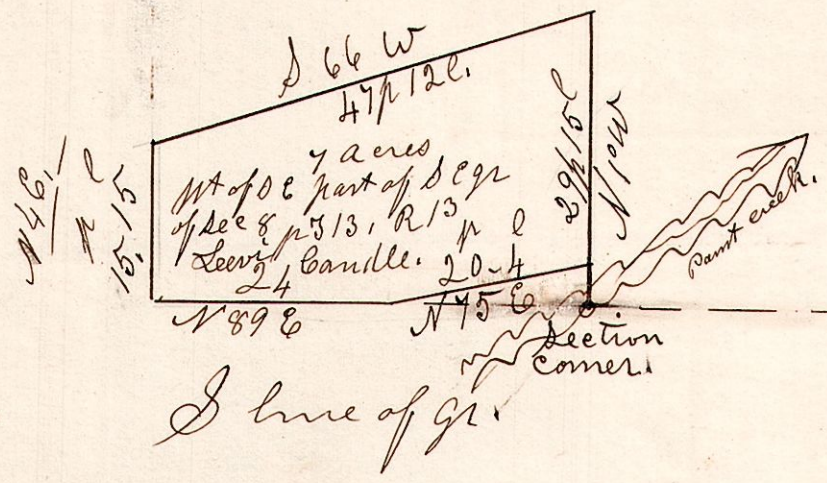


13. 13. 8. June 12<sup>th</sup> 1867.

Part of the S.E. part of the S.E. qr. of Sec 8, in Sp 13, of R. 13.



June 12<sup>th</sup> 1867.  
Levee Bandle.

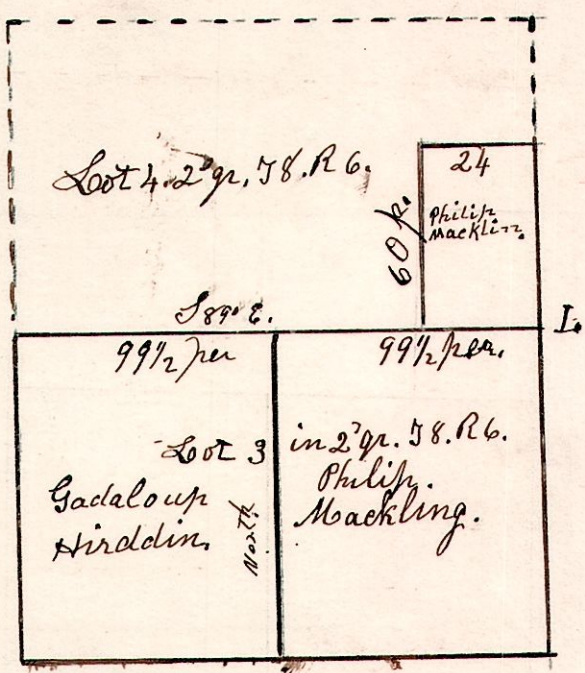
741 to here.

$9222.30 - 150 = 472.30$

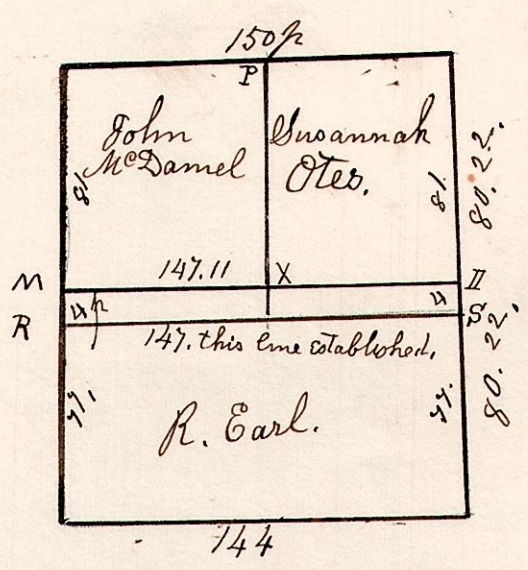
6. 8. 4. 2<sup>nd</sup>. 13<sup>th</sup> 2<sup>nd</sup>.

May 25<sup>th</sup> 1839.

Surveyed the S.E. part of lot No. 4, T8. R. 6. 2<sup>nd</sup> qr containing 9 acres. Also divided lot No. 3 in 2<sup>nd</sup> qr. T8. R. 6 N & S through the center.



12. 15. 34.



The line S. R. includes 79 acres in the North part, in the line M I divides the gr through the center. No record to be made until they determine which of the lines will be the established line.  
Line R.S. Established.