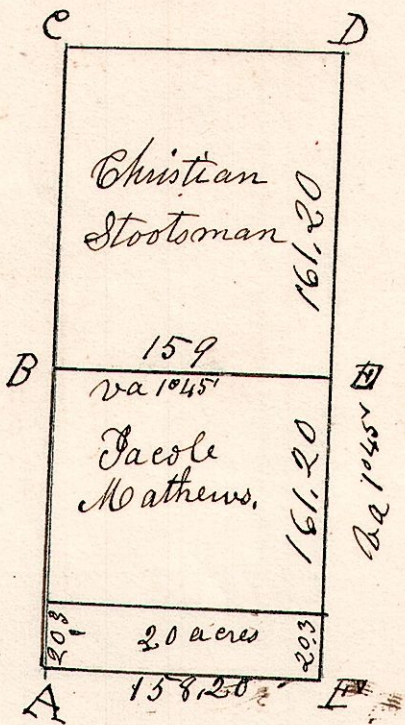


6.9.8. Sept 24 1829. Surveyed the west half of Sec 8, in T9. of R 6. In the following manner an Persons.

772

A	Sassafras	7	N59E	7
"	Maple	24	S69W	55
B	W. Oak	24	East	25
"	Do	28	N10W	37
C	Beech	10	N33E	16
"	Do	10	S61W	8
D	R. Oak	36	S78W	49
"	Hickory	12	S58E	20
E	R. Oak	36	S78W	25
"	W. Oak	18	S46E	36
F	W. Oak	12	N37W	7
"	B. Oak	24	S22E	9

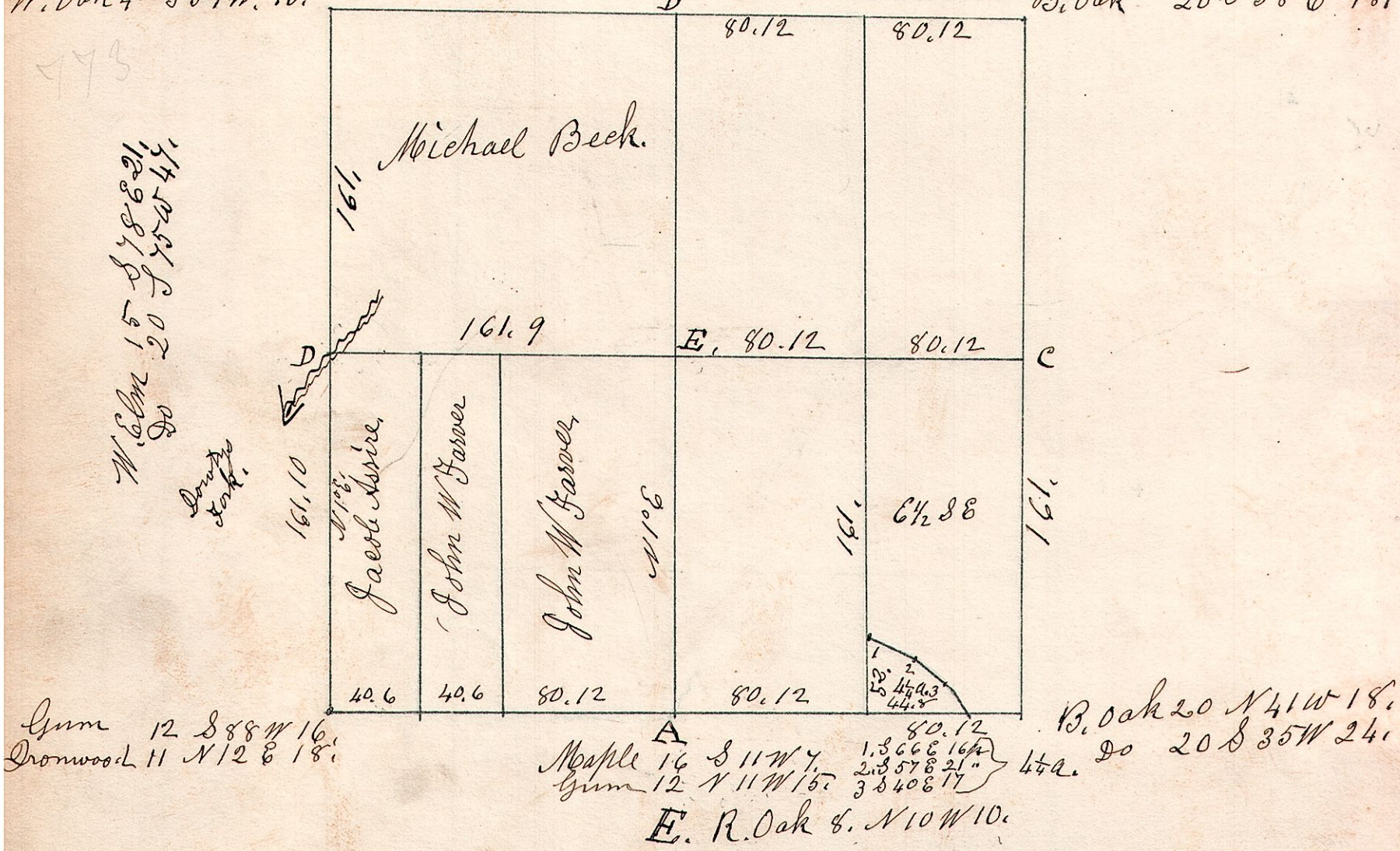


March 25 1852 this day a small Sassafras planted at the stump of the original one + small Maple planted at the maple stump of the original.

March 20 1852, Surveyed 20 acres for Joseph Nevill Spt. S.W. qtr of S 8, T 9, R 6, be 1/2 to the right.

6.8.11. May 13 1864.

Maple 12 S 85 E 22
W. Oak 40 S 57 W 10.
W. Oak 14 N 68 W 26.
Maple 20 S 73 E 21.
Chestnut 24 S 62 W 68.
B. Oak 20 S 58 E 18.



Gum 12 S 88 W 16.
Dronwood 11 N 12 E 18.
Maple 16 S 11 W 4.
Gum 12 N 11 W 15.
B. Oak 20 N 41 W 18.
Do 20 S 35 W 24.
E. R. Oak 8. N10W10.

6.8-1. March 19 1847.

North East corner of the South west quarter of Section 1, in Township 8. of Range 6.

March 19 1847.

