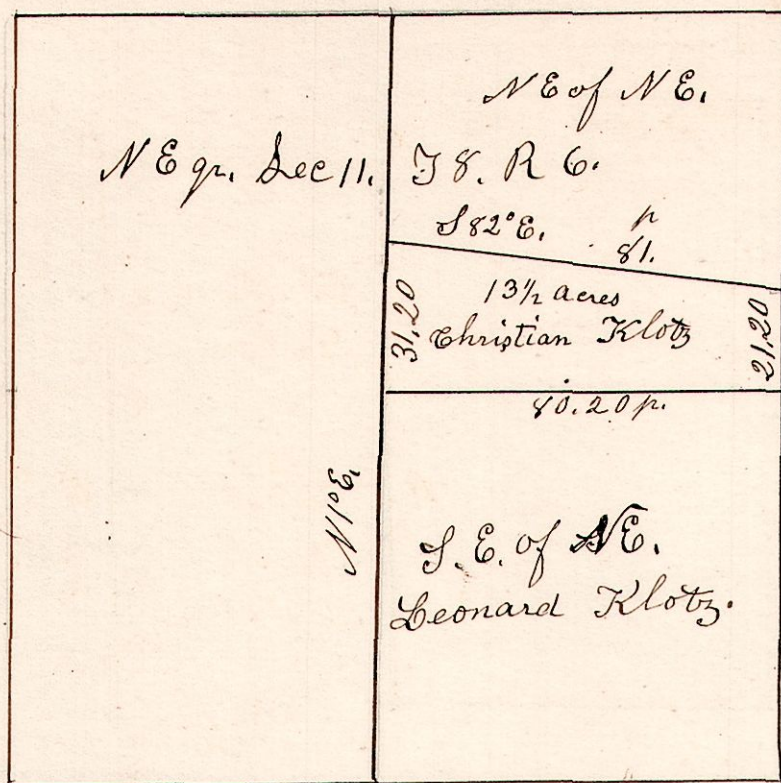


6. 8. 11. May 12th 1858.

North East quarter of Section 11
in Township 8 of Range 6.

775

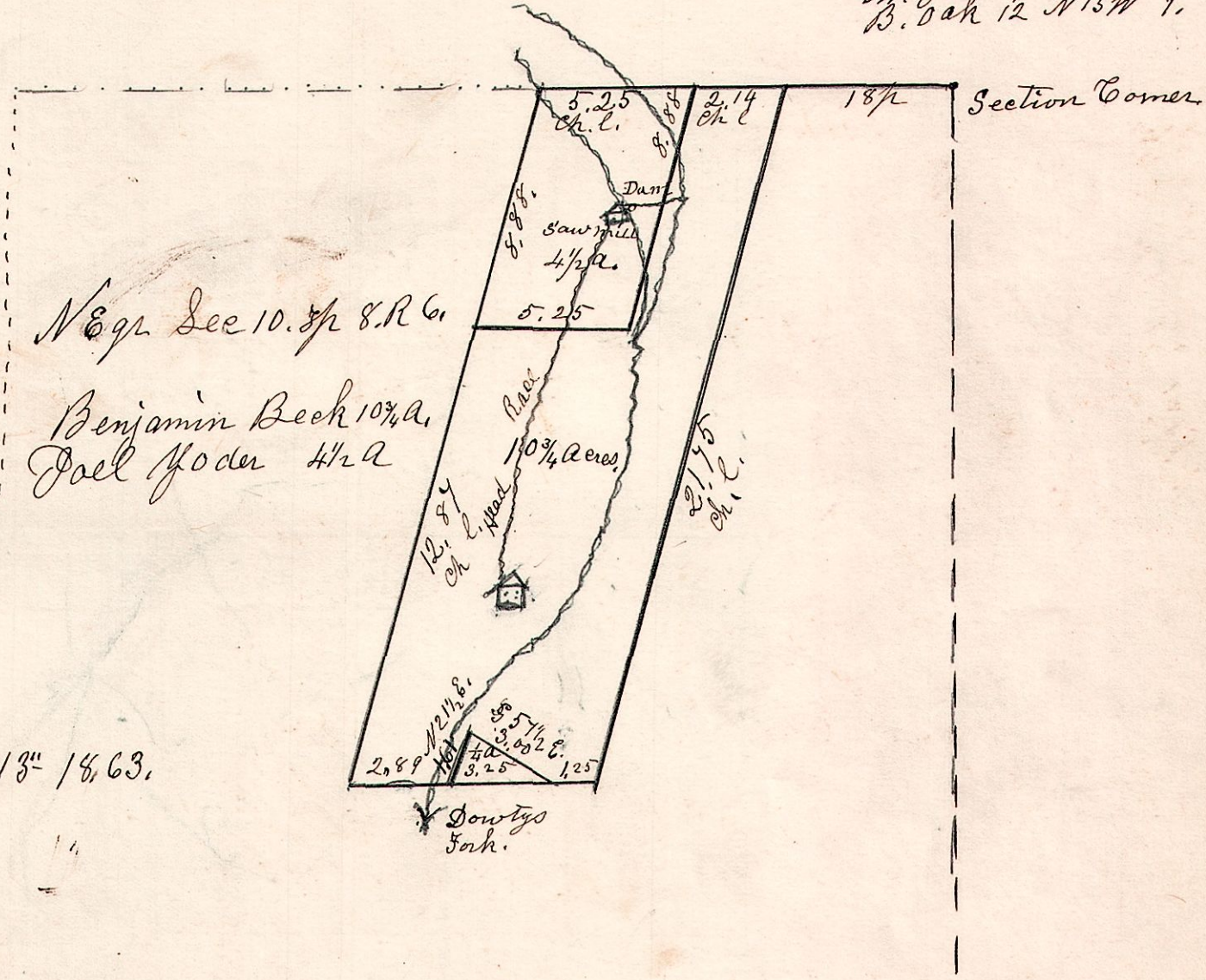


May 12th 1858. Surveyed
the 13 1/2 acre piece.

6. 8. 10. January 13th 1863.

776

N. Oak 9 S 21 W 30.
B. Oak 12 N 15 W 7.



NE 1/4 Sec 10. T. 8. R. 6.
Benjamin Beck 10 3/4 a.
Joel Foder 4 1/2 a

Surveyed January 13th 1863.