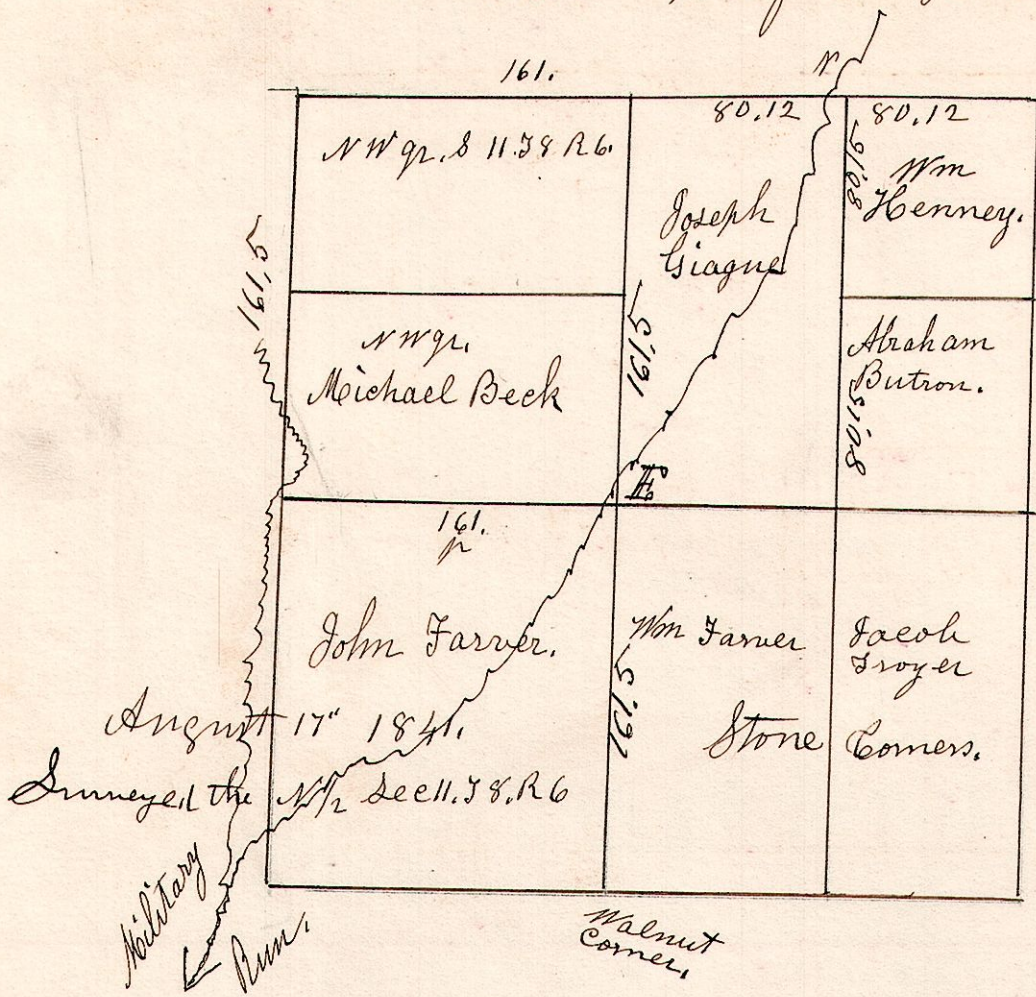


6. 8. 11. August 17<sup>th</sup> 1841. Surveyed the north half of Section 11 in Township 8 of Range 6.

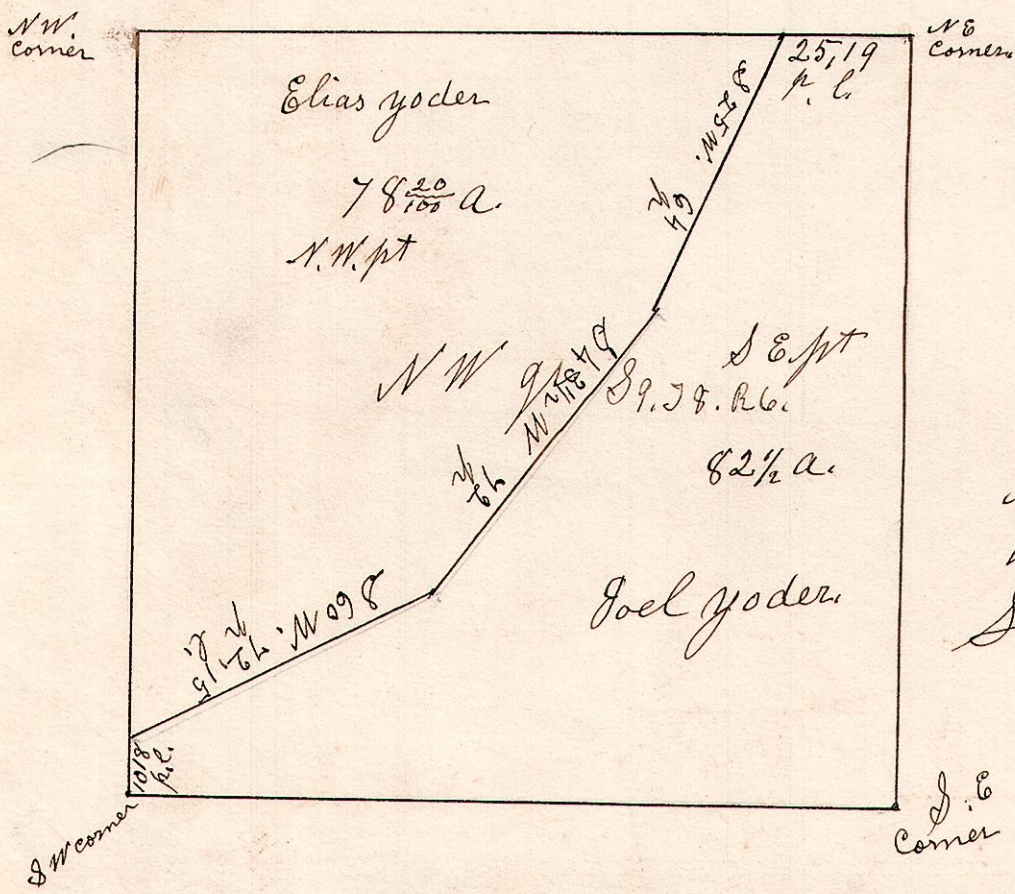


E. R. Oak 8, N10W10.

October 5<sup>th</sup> 1844. Surveyed the S 1/2 of above section.

at that time S 89° E. N 1° E.

6. 8. 9. February 18<sup>th</sup> 1869. Surveyed the NW 1/4 Sec 9, T8, R6.



NW 1/4 of Section 9, in T8, of Range 6. Surv Feb 18<sup>th</sup> 1869.