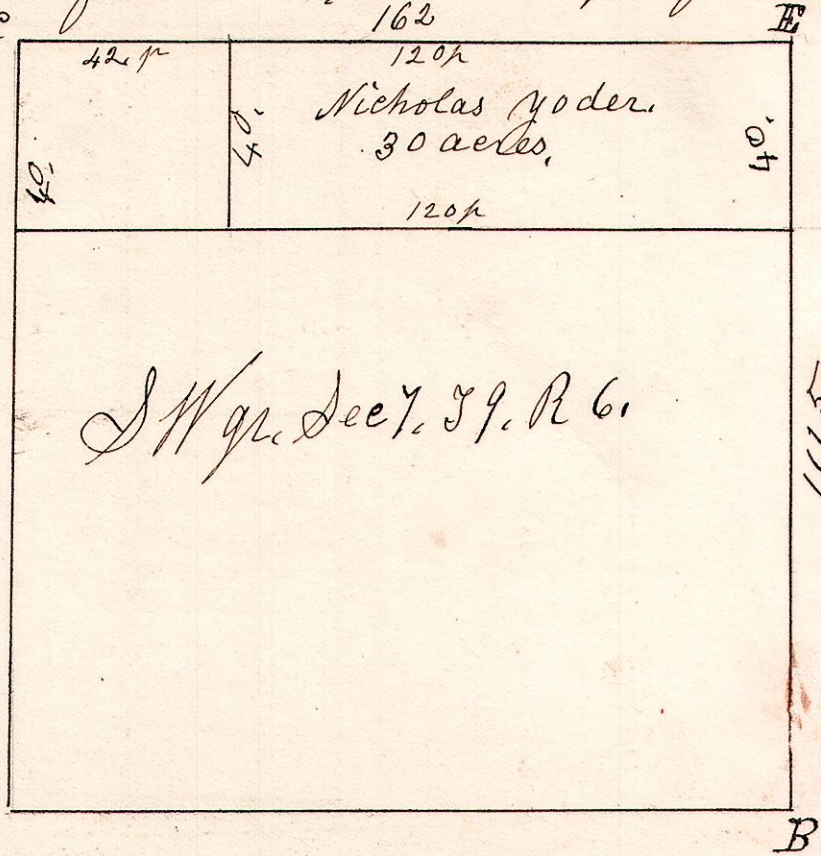


6.9.7. September 10th 1838.
 Surveyed 30 acres for Nicholas Yoder, the North East part
 of the South West quarter of Section 7, in Township 9, of Range 6.

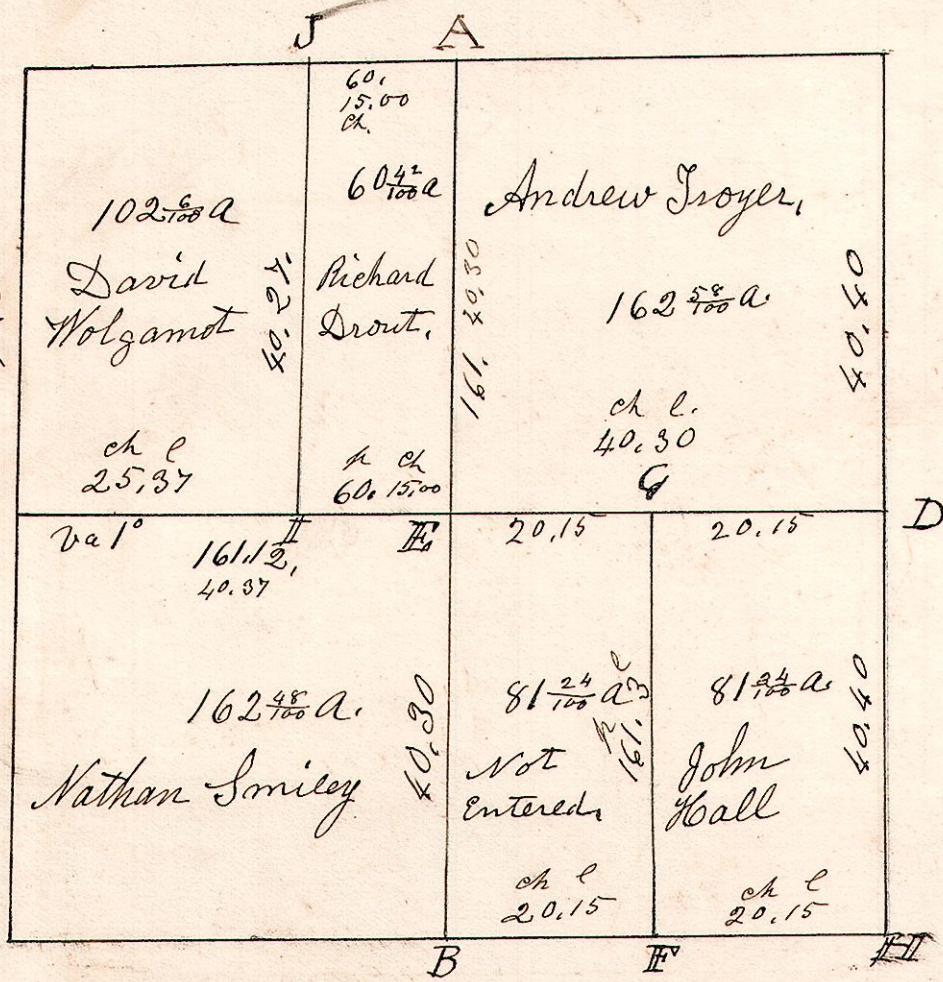


- B Hickory 12 S 40 W 17.
- " Sugar 9 S 43 E 6.
- C B. Oak 13 N 22 1/2 E 7 1/2
- " W. Oak 16 S 45 E 28
- E W. Oak 20 S 87 1/2 E 32 1/2
- " Beech 15 S 65 E 47

SW qr of Sec 7. T 9. R 6.

N 4 S 40 ft } 30 acres
 E 4 W 120 ft }
 Sept 10th 1838.

6.9.7. November 10th 1826.
 Surveyed Section No 7, in Township No 9, of Range No 6.



- A. Sugar 12 S 43 W 39.
- " W. Oak 20 S 79 E 36.
- B Hickory 12 S 40 W 17.
- " Sugar 9 S 43 E 6.
- E W. Oak 20 S 87 1/2 E 32 1/2
- " Beech 15 S 65 E 47
- C B. Oak 13 N 22 E 7 1/2
- " W. Oak 16 S 45 E 28
- D W. Oak 16 S 34 W 11 1/2
- " Do 24 S 89 E 26
- G W. Oak 20 S 63 W 9 1/2
- " Do 15 N 13 1/2 W 25
- F Hickory 16 N 10 W 20
- " Chestnut 12 S 3 W 5
- H Sassafras 7 N 54 E 7
- " Hoopoe 24 S 67 W 55
- I Hickory 15 S 15 E 25
- " R. Oak 30 N 48 W 32
- J. Stone 15" Diameter