

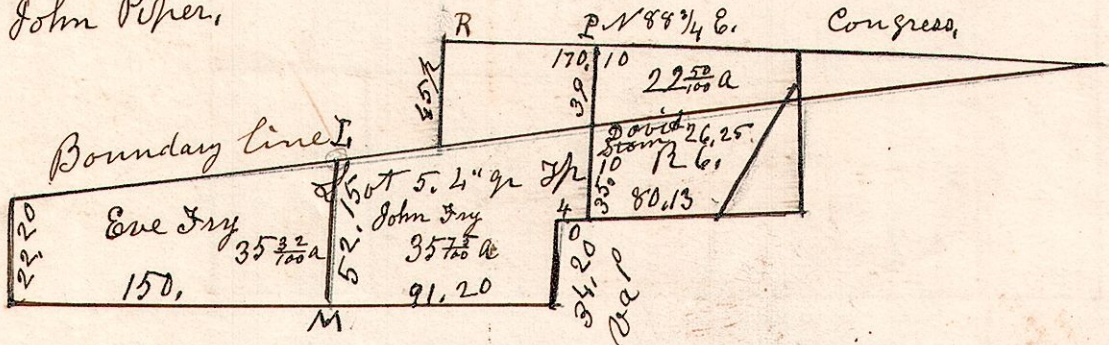
6.10.5. $\frac{4}{9}$

April 13th 1842.

412

Lot No 5.4th q^r S 10. R 6.

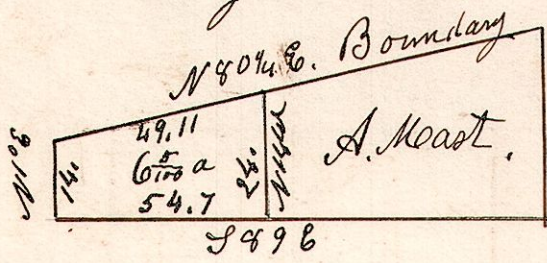
A. Fry + John Piper.



From 'L' to Congress corner 48 nearly.
 From 'O' to 'P' 74.4
 From 'R' to 'P' 44 1/2

6.10.12 Sec 3. February 2nd 1849.

413



Surveyed the west part for John Orr, Spoon lot, or fraction near A Snyder's Mill.

Frac Sec 3, S 10. R 6
 Surveyed the west part for John Orr
 February 2nd 1849.

6.10.21. $\frac{4}{9}$

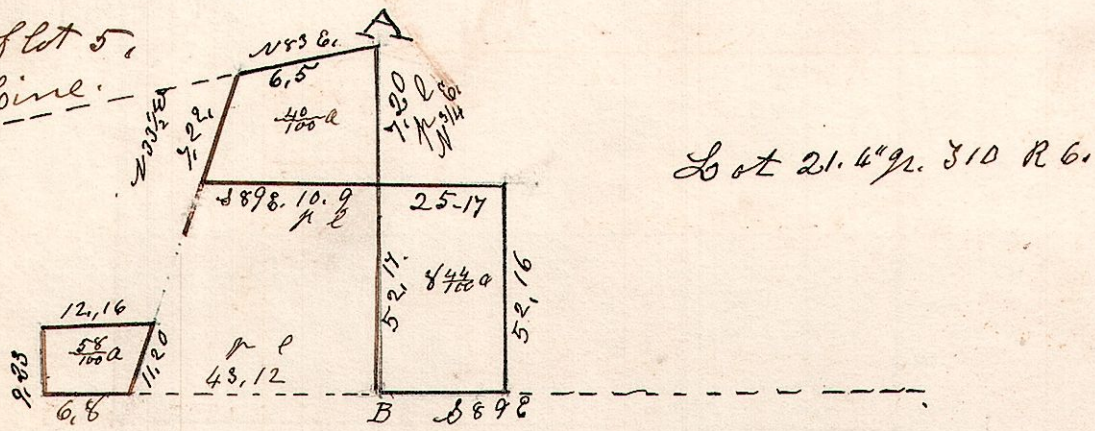
April 11th 1856.

414

'A' is the NE corner of lot No 5.4th q^r S 10. R 6

$\frac{40}{100}$ a piece NE cor of lot 5.

Boundary Line.



April 11th 1856. Surveyed the above land for Daniel Burkey and John Arnold.