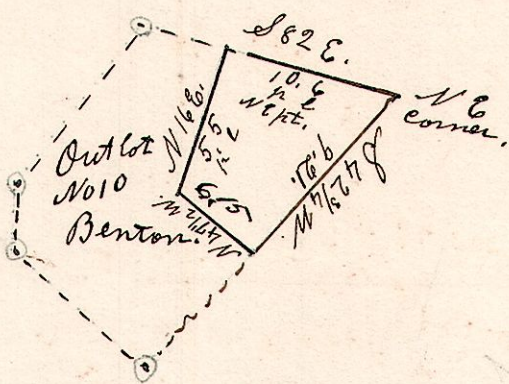


Out Lot 10. Benton.

April 4th 1872.

823

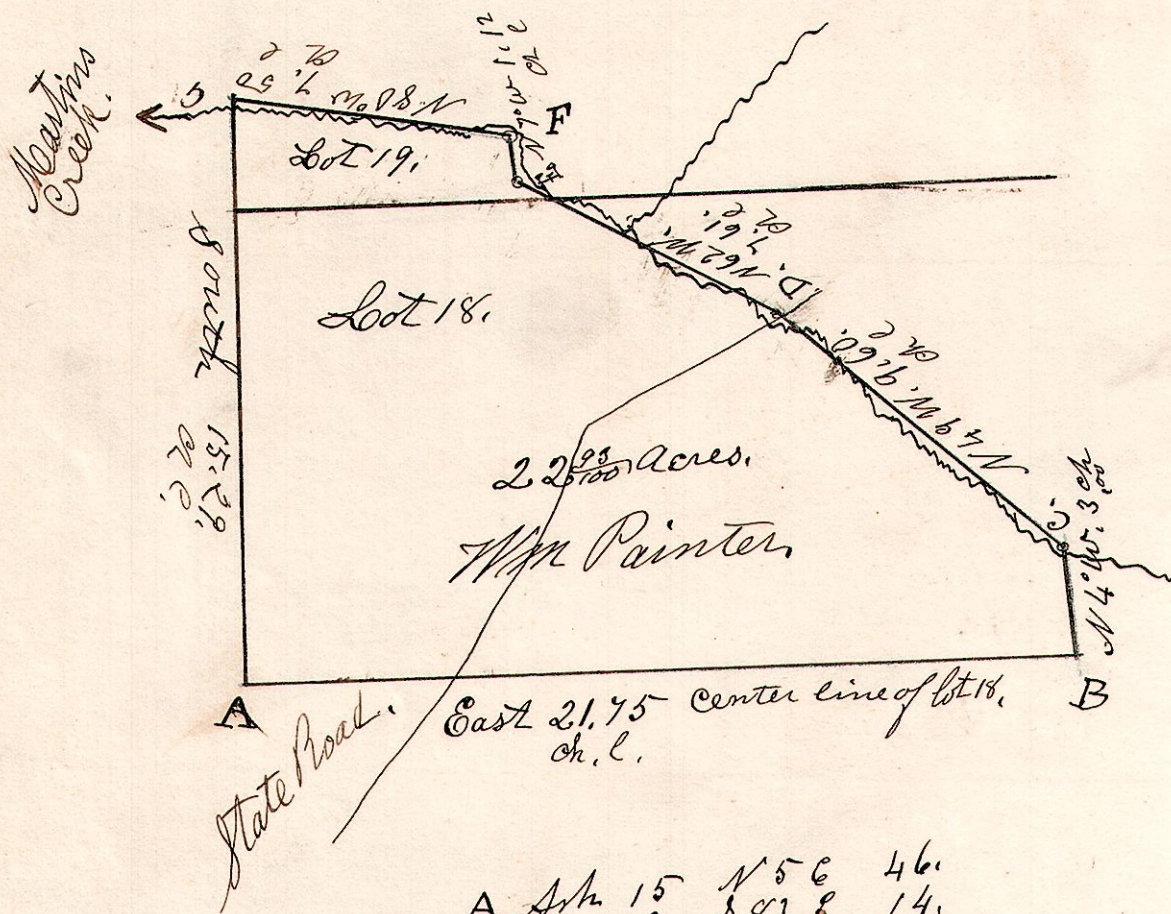


Surveyed the north east part of out lot Number 10 in Benton for Ezra Lemmon April 4th 1872. $\frac{36}{100}$ acre.

6.10.18. $\frac{4}{92}$.

824

September 4th 1827.



Scale 5 chains to the inch.

A.	Ark	15	N 56	46.
"	Do	12	S 83 E	14.
B	Hickory	S 79 E	25.	
"	Ironwood	N 66 W	21.	
C. Post				
E.	Thorn	12.	S 21 W	12.
F.	Elm	12.	S 81 W	20.
G.	Thorn	7.	S 87 E	23'

September 4th 1827 Surveyed the above for Wm Painter part situated in the N.W. corner of lot 18. S 10 R 6. 4th gr. and part of lot 19. S 10. R 6-4th gr. Beginning at the center of lot 18. on the west end at "A"