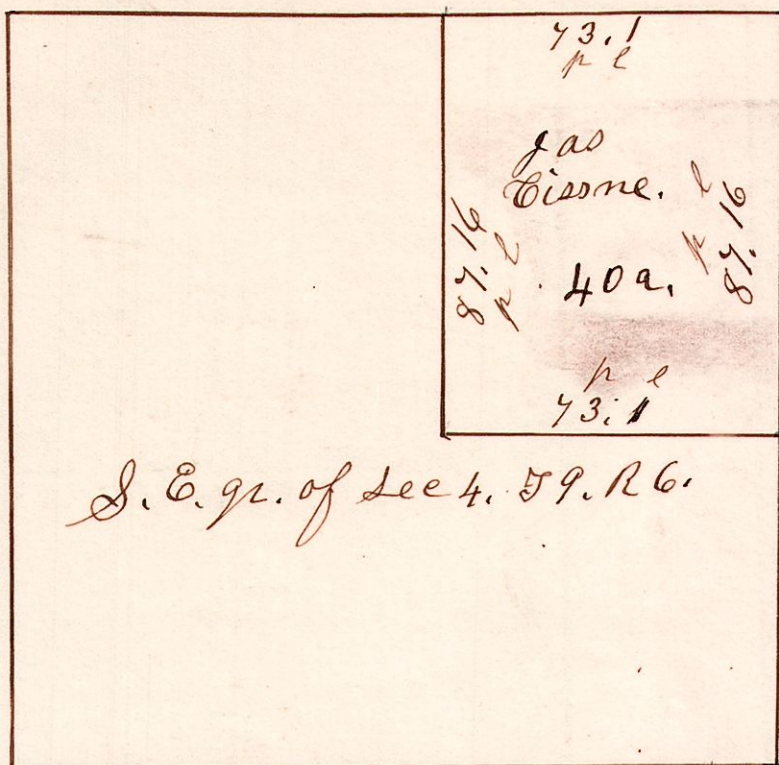


6.9.4.

1845 North East part of the north East quarter of Section No 4, in Township 9 of Range 6.

Chestnut 36. South 23. W. Oak 20. N 576 24.

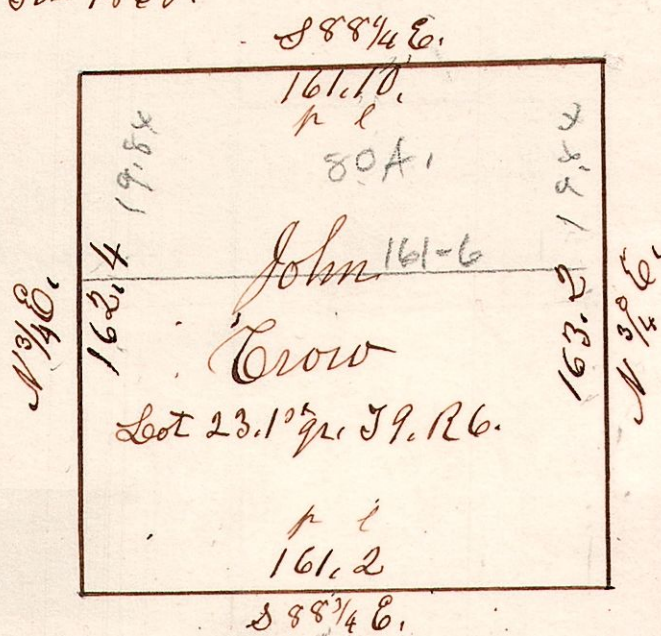


6

161

6.9.23, 1st q^r.

Lot 23. in 1st q^r. 59. R 6 School Land. April 30th 1868.



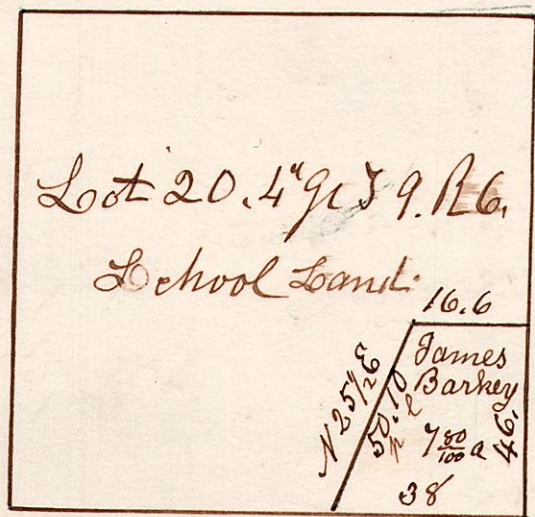
Surveyed April 30th 1868.

7

6.9.20. 4th q^r.

June 3rd 1840.

Lot 20. 4th q^r. 59. R 6.



49 12 09

8

June 3rd - Surveyed the above 7a & 126 per.