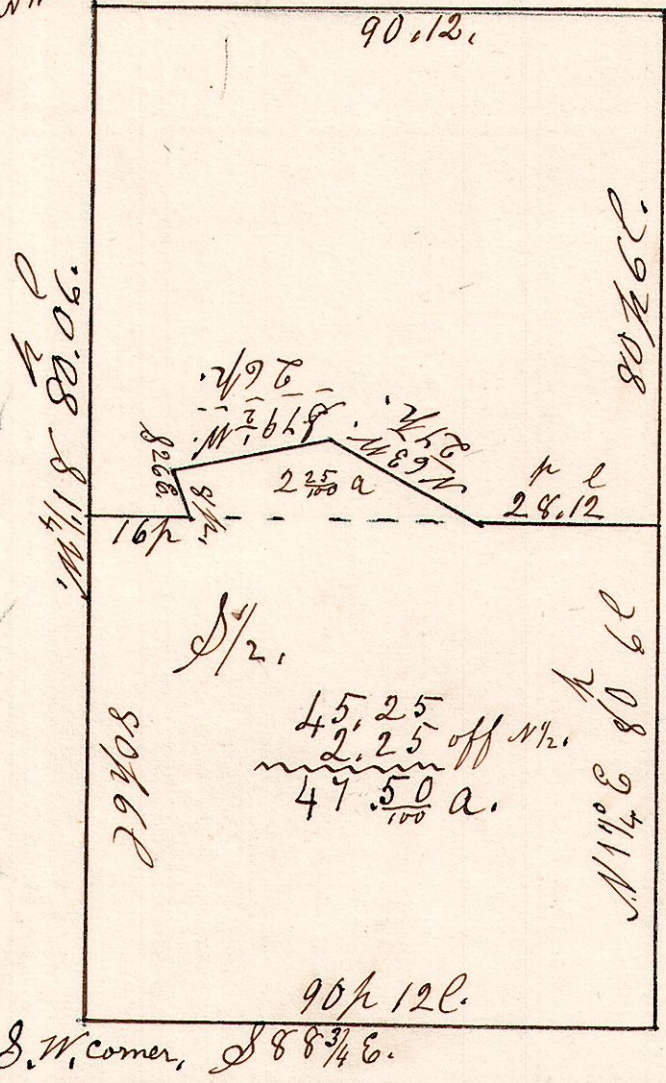


6.9.6.

October 12th 1867.

Dr J. G. Bigham
W^{1/2} of S^{1/2} of Sec 6. T9. R6.
NW corner

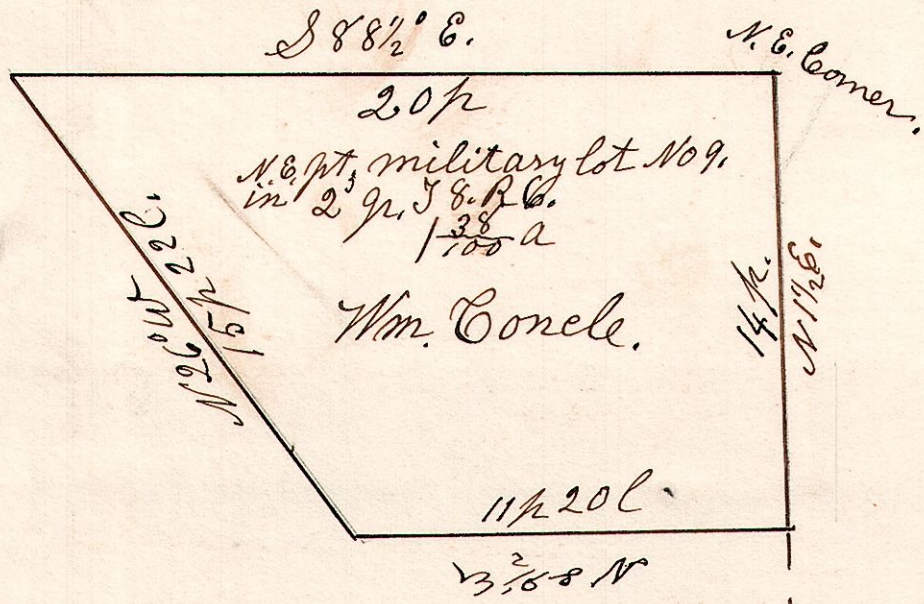


Dr J. G. Bigham

Oct 12th 1867.

6-8. 9- 2^{gr.}

Nov 29th 1873.



D. R. Mc Namara.
Lot 9, 2^{gr.} T9. R6.
Military.