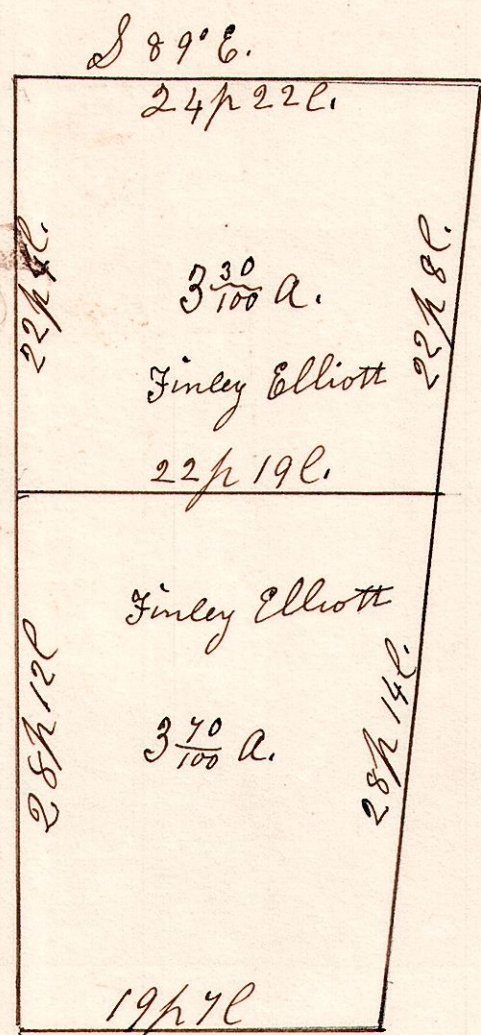


6-8.31.20

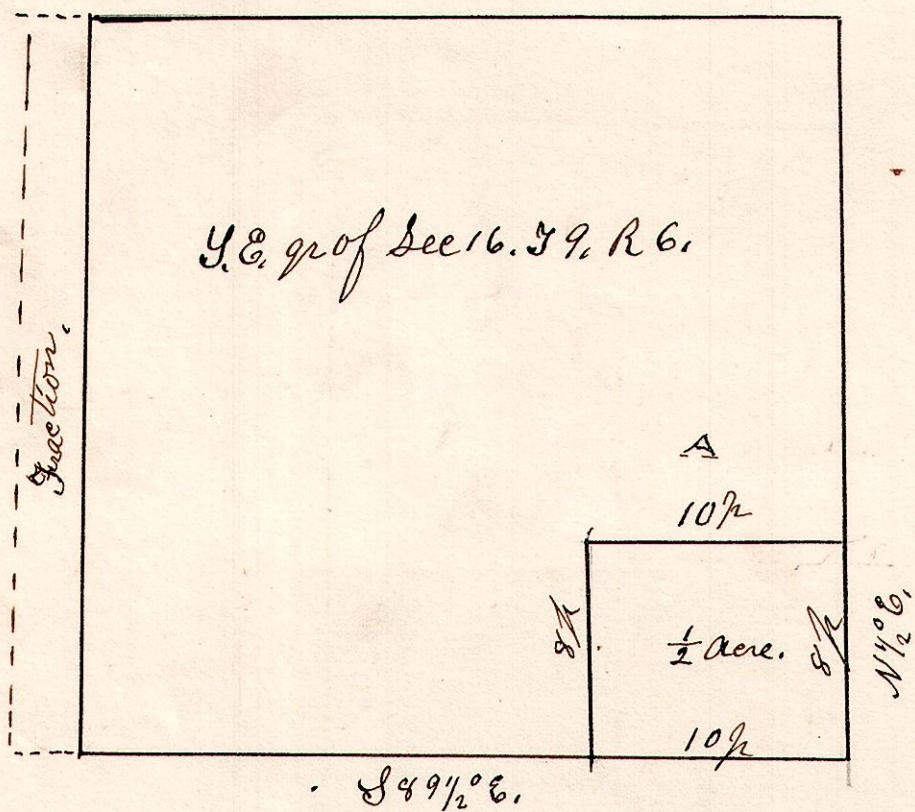
April 1866.



North west part of
 Military lot.
 Finley Elliotts w lot.
 R 6. 58. Sec 2.

6.9.16.

May 26th 1855.



May 26th 1855.
 Surveyed the above 1/2 acre for the
 purpose of a School house site.

Directors, Joseph Spring,
 Edw. Carpenter,
 Robert Demmon
 S.E. qtr. of S.E. qtr of Sec 16. 59 R 6.