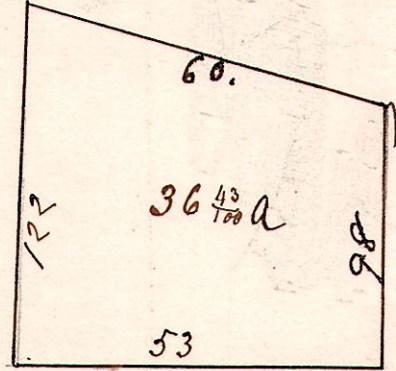
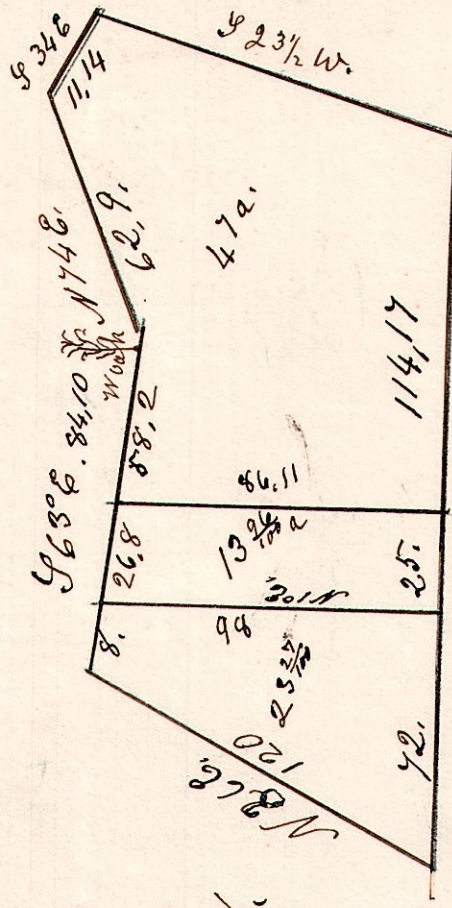


6. 9. 15.

October 16th 1860.

Calhoon Estate Dower.

First Dower

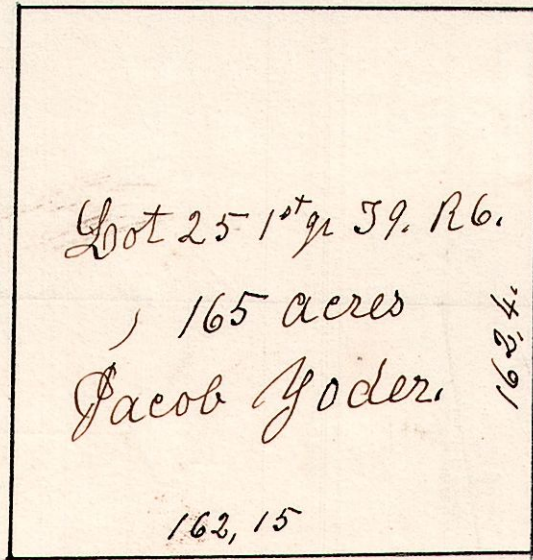


November 19th 1844.

6. 9. 25. 1/2⁺ School Land.

W. Oak 168 12.
Do 8 118 53. 163, 10

Sum 20 N 66 1/2 W 30
Do 24 S 45 E 7



Hickory 168 19. val 1/4 of 6.
Do N 20 E 9.

Maple 4 S 86 32.
W Oak 5 S 59 W 25.

5-8. 20.

