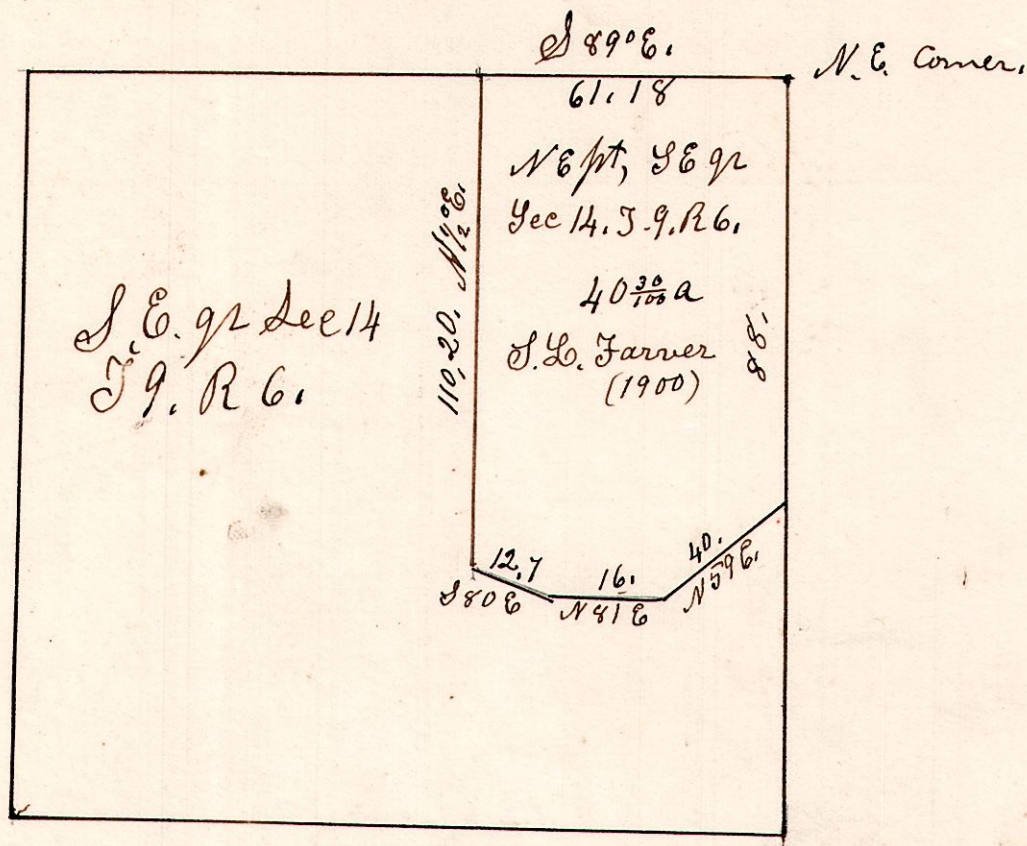
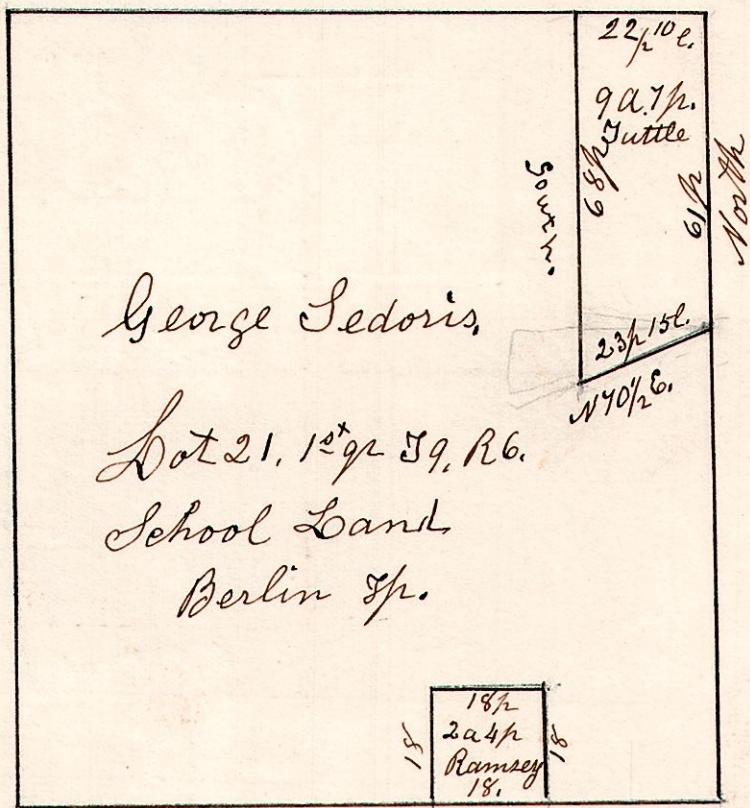


6-9. 14. April 18th 1867.



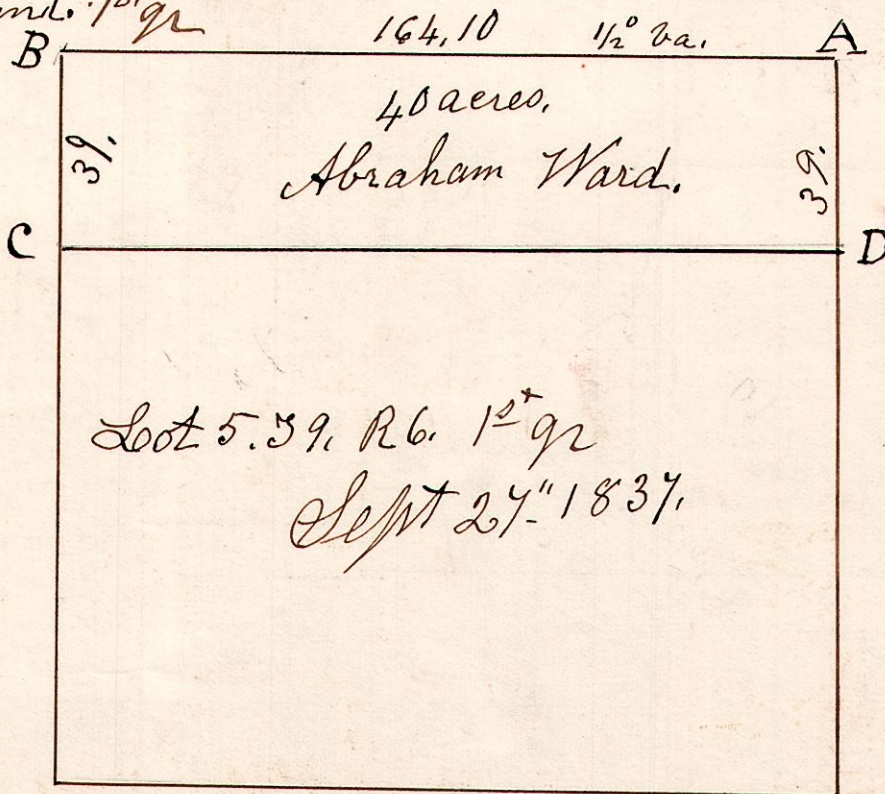
6.9.21. 1st qz. Surveyed Tuttle, piece & Margaret & Mary Ramsey, piece, March 11th 1837.

George Sedoris (applicant)



6-9. 5. School Land. 1st qz

Sept 27th 1837.



C. W Oak. 36 S 69 E 55.
" Do . 20 N 25 E 72 1/2