

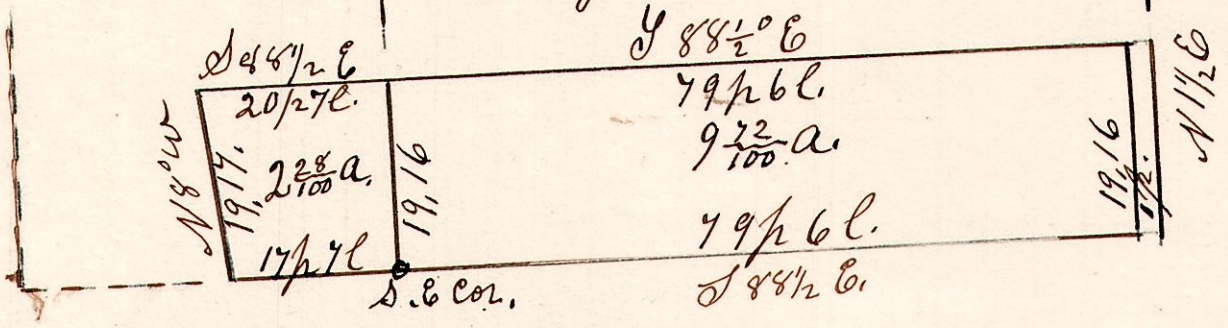
6.9.25. NE q.

July 24<sup>th</sup> 1872.

NE q. Sec 25, T9 R 6.

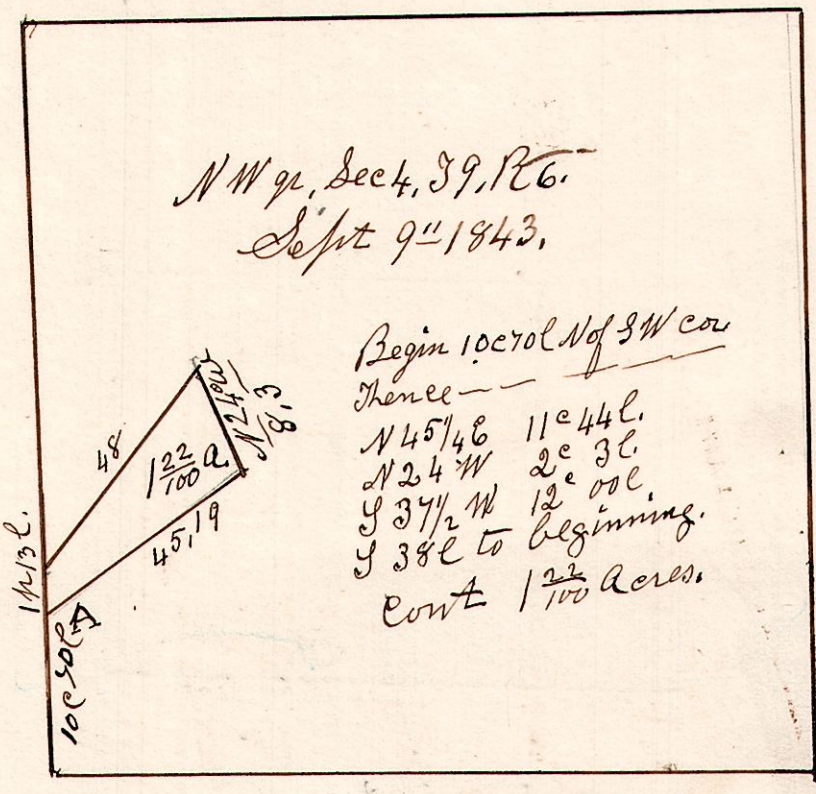
NW q. of frac.  
Sec 25, T9 R 6.

D. Baughman  
July 24<sup>th</sup> 1872.



6.9.4. NW q.

NW q. Sec 4, T9 R 6.  
Sept 9<sup>th</sup> 1843.



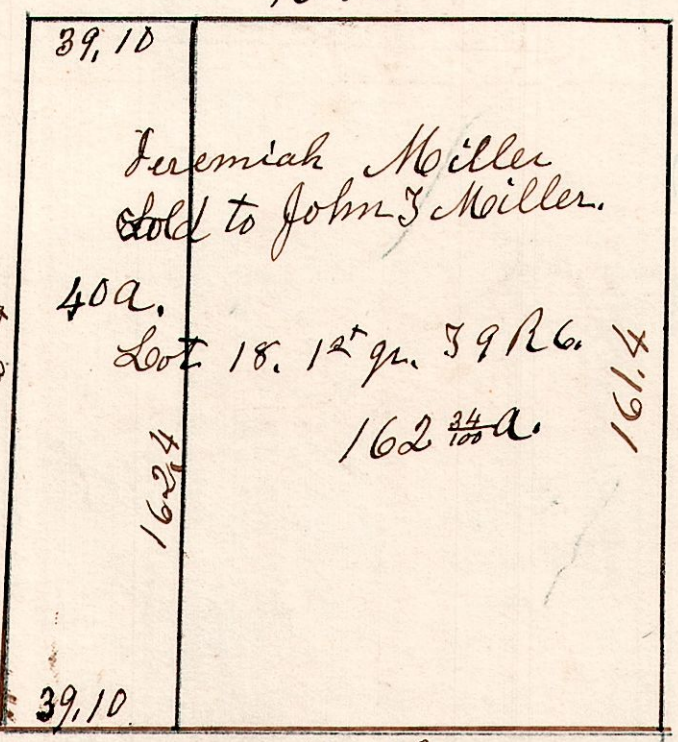
"A" is 10 chains, 70 links N of  
S.W. corner of NW q. of  
Sec 4, T9 R 6.  
Sept 9<sup>th</sup> 1843  
Surveyed for Jacob Mast.

6.9.18. 1 1/2<sup>+</sup>  
School Land.

March 20<sup>th</sup> 1868. (92)  
December 26<sup>th</sup> 1871. (40 a.)

H. W. Oak N 64 W 25  
19. Do S 85 W 32.

W. Oak 12 N 17 E 20.  
D. Oak 18 S 37 W 31.



Post in Prairie.

March 20<sup>th</sup> 1868.

W. Oak 22 S 11 E 17.  
Do 17 N 77 E 18.