

6. 9. 25

May 6th 1840

Surveyed Section 25 in Tp 9 of R 6.
For the following persons.

B. Ash 12 S 72 E 6.
Do 12 S 49 W 20.
W. Elm 18, N 31 W 15.

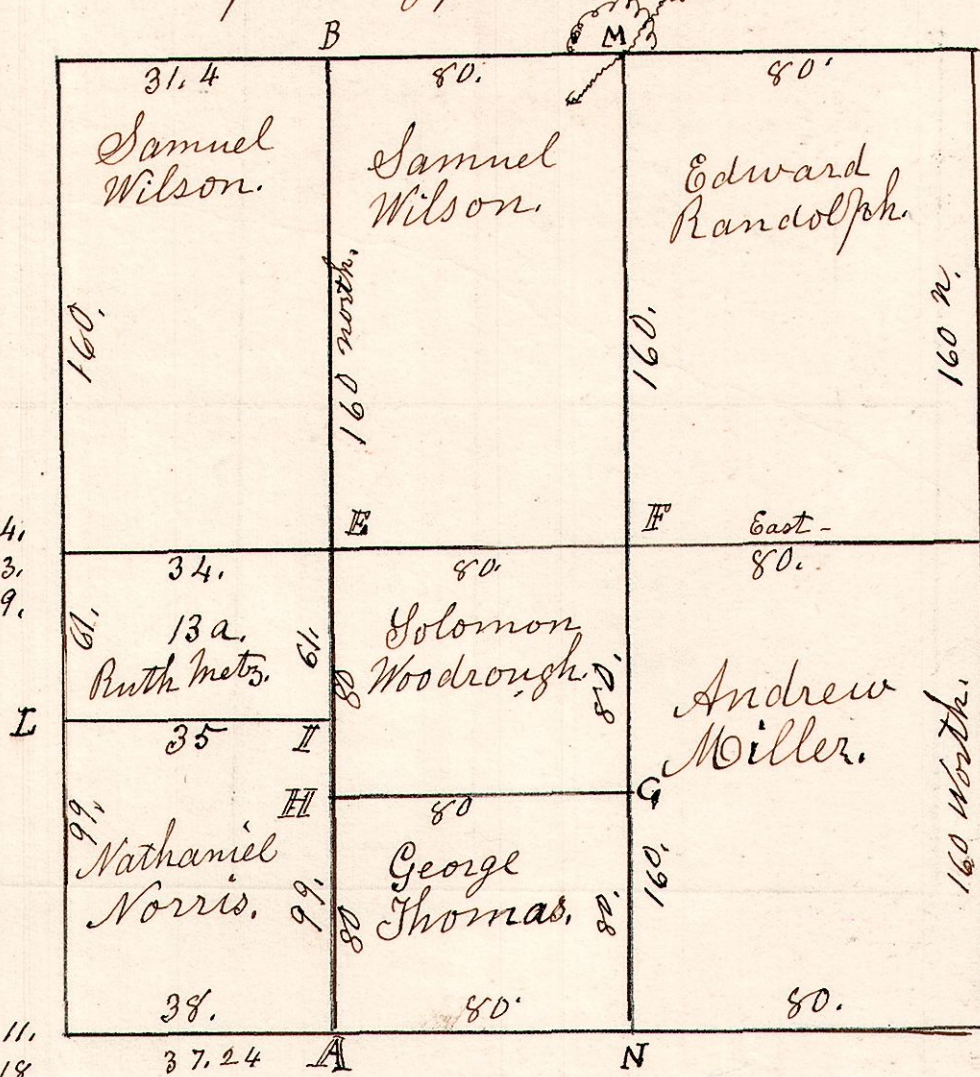
Maple 16 N 4 E 24.
W Oak 14 S 52 W 7.

W Oak 16 N 82 W 34.
Do 20 22 N 36 E 13.
W Do 40 S 36 W 19.

Maple 16 S 7 E 44.
Do 24 N 84 E 36 1/2.

Hickory 20 S 79 W 11.
Do 12 S 66 E 18

Gum 12 N 18 E 16.
Maple 16 S 75 E 26



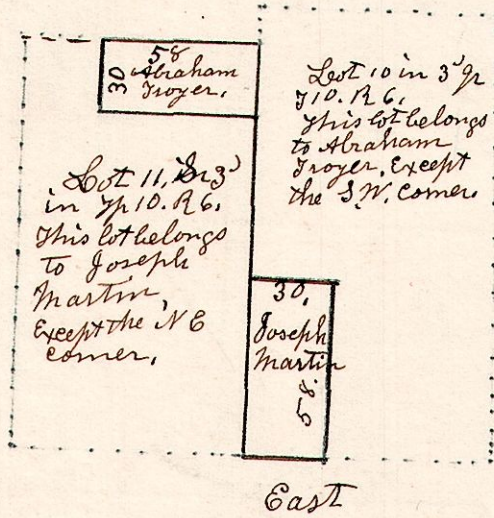
- A. Maple 10 N 44 W 18 - Elm 18. East 22.
- B. Sugar 12 S 41 W 39 - Sugar 8. S 42 E. 63.
- E. Hickory 12 N 61 E 12 - Hickory 12 N 70 W 26.
- F. Poplar 12 N 58 E 6 - Hickory 13 N 68 W 32.
- G. W. Oak 25 S 40 W 9 - Gum 8 N 61 W 4.
- H. W. Oak 40 S 16 W 22 - Ironwood 6 N 39 W 5.
- I. W. Oak 40 S 35 W 17 - Maple 20 N 32 E 18.
- J. W. Oak 18 N 10 W 17 - W. Oak 20 S 35 E 22 1/2.
- M. Sugar 16 S 55 W 60 - W Elm 30 N 89 W 73
- N. Stone the corner.

Stone planted 2 per west of cor. M.
Do 2 per East of " "

6. 10. 10. 3 1/2

White deed of conveyance from Joseph Martin and Rebecca Martin his wife to Abraham Troyer Jr for 10 acres + 140 perches of land, Being NE Corner of lot 11. Consideration money two hundred dollars.

White deed from Abraham Troyer Jr and Susanna Troyer his wife to Joseph Martin for 10 acres + 140 perches of land, Being the SW corner of lot 10. S 3. T 10. R 6 Consideration money \$200 dollars.



July 11th 1837,
The following surveys was a change made by the two parties 10 acres and 140 perches in each piece.